

**DAILY CONSTRUCTION REPORT**

Date: Wednesday, 05-17-2017  
(Day 20)

**PROJECT:** Middle Road Improvements  
**CLIENT:** Town of Cumberland  
**CONTRACTOR:** Storey Brothers  
**PROJECT MANAGER:** Dan Diffin, P.E.

**WEATHER:** Mostly Sunny  
**TEMP:** 70's  
**WIND:** Light Breeze  
**HUMIDITY:** Dry

**FIELD FORCE**

Name of Contractor	Supervisor	Non-Supervisor	Remarks
Storey Brothers	1 (Rick Storey)	3 (Laborers) 1 (Dump Truck Driver)	Laborers operate equipment as needed. Driver assisting Laborers in excavation
Ace Security	0	4 (Flaggers)	2 Flaggers at intersection & 1 at south end of work zone (plus 1 for breaks)
CSI (for PWD)	1 (Dave Bernard)	0	Dave Bernard, Inspector for PWD

**VISITORS**

Time	Name	Representing	Remarks

**EQUIPMENT**

1 Excavators (active) – CAT 329D (delivered to site for water work at Tuttle Road)		
3 Excavators (idle) - CAT 316F, CAT 315C, CAT 330D (idle near end of drainage work)		
1 Loader - Cat 930H (used to transport backfill material, equipment, etc.)		
2 Rollers – Ingersoll SD-116DX & Volvo 540 (both idle due to no drainage work)		
1 Dozer – CAT D5K2 (idle due to no drainage work)		
1 Dump Truck	1 Box Truck (Equipment)	1 Box Truck (Materials)

**CONSTRUCTION ACTIVITIES**

Water system had passed disinfection testing so crew stopped drainage work to complete the reconfigured water main connection at Middle & Tuttle Road. Refer to Drawing C106.
Shut-off water main and disconnected temporary system associated with the "Phase 1C" portion of the connection
Installed last section of new 12-inch Ductile Iron water main on "Phase 1B" portion (see photo).
Installed section of new 12-inch Ductile Iron water main in "Phase 1C" portion extending for 10x12 reducer connected to existing 10-inch water main from the east (parallel to Tuttle Road) and made final connection with 45-degree elbow (see photo).
Tapped new main for service connection to 163 Middle. Connected new copper water service to existing service valve (curb stop).
Backfilled and graded site for loam (see photos).
Purged air and flushed system. Restored water service at approximately 7PM

**QUALITY ASSURANCE**

PWD Inspector, Dave Bernard on-site throughout the day overseeing water main connection and the restoration of service.
SME on-site to review overall progress, verify materials & quantities, and inspect erosion control measures.

**DISTRIBUTION:**

- 1 File
- 2 SME
- 3 Town of Cumberland
- 4 Storey Brothers, Inc.
- 5 Portland Water District

PAGE 1 OF 3

BY: Jim Manzer, P.E., PTOE TITLE: Project Engineer



SEVEE & MAHER ENGINEERS, INC.  
CONSTRUCTION PHOTOS  
May 17, 2017



12-inch water main from new vault installed at the Tuttle Road intersection



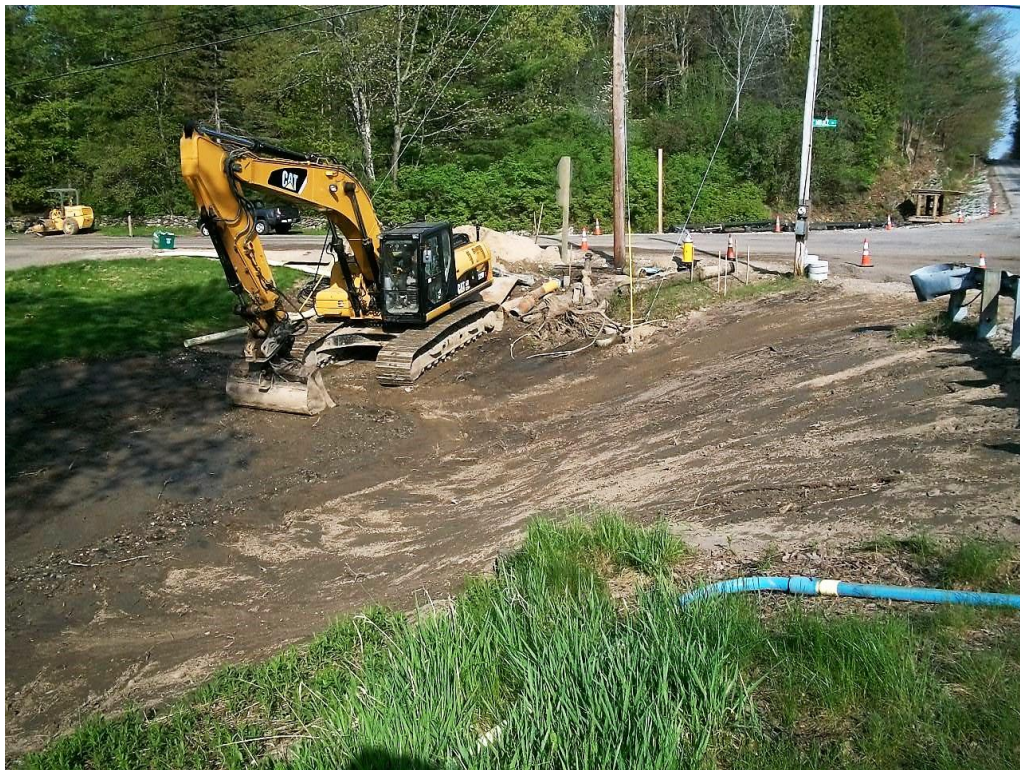
Installing elbow to connect new 12-inch main from vault to the 12-inch pipe extending from the reducer connected to the existing 10-inch main running parallel to Tuttle from the east.



SEVEE & MAHER ENGINEERS, INC.  
CONSTRUCTION PHOTOS  
May 17, 2017



Water main connection adjacent to 163 Middle backfilled and graded late in the day.



Clean-up and stabilization of water main connection site remains.