

**WEEKLY CONSTRUCTION REPORT**

PROJECT: MIDDLE ROAD IMPROVEMENTS

PERIOD ENDING: FRI, 9 June 2017

JOB NO.: 16047.00

CLIENT: TOWN OF CUMBERLAND

CONTRACTOR: STOREY BROTHERS, INC.

PROJECT MANAGER: DAN DIFFIN

<b>AVERAGE FIELD FORCE</b>			
<b>Name of Contractor</b>	<b>Non-manual</b>	<b>Manual</b>	<b>Remarks</b>
STOREY BROTHERS INC.	1 - Operator	1-3	Single Operator for hoe ram or excavator. Operator/Laborers on-site when needed
ACE SECURITY		3	Flagging
SUMMIT NATURAL GAS		4	Install natural gas line
ON TARGET UTILITY SERVICES		3	Install replacement poles
<b>VISITORS</b>			
<b>Date</b>	<b>Name</b>	<b>Representing</b>	<b>Remarks</b>
6/05/17	Skip McKay	CMP	Coordinate with Summit on Poles
6/05/17	Eric Lindquist	CMP	Coordinate with Summit on Poles
6/05/17	Peter Hakkila	On-Target Utility Services	Pole installer for CMP
<b>TYPICAL EQUIPMENT ON-SITE</b>			
2 EXCAVATORS, 1- LOADER, 1 ROLLER, & 2 DUMP TRUCKS			
<b>CONSTRUCTION ACTIVITIES</b>			
6/05 – Installed 220 linear feet of gas line from STA 78+40 to STA 76+20			
6/06 – Installed 140 linear feet of gas line from STA 76+20 to STA 74+80. Pole crew installing pole south of work zone			
6/07 – Installed over 400 linear feet of gas line from STA 74+80 to STA 70+75			
6/08 – Installed approximately 600 linear feet of gas line from STA 70+75 to STA 64+75. Minimal ledge encountered			
6/09 – Installed 550 linear feet of gas line from STA 64+75 to STA 59+25			
<b>QUALITY ASSURANCE:</b>			
SME on-site to review overall progress, verify materials & quantities, and inspect erosion control measures.			

**DISTRIBUTION:**

PAGE 1 OF 1 PAGE

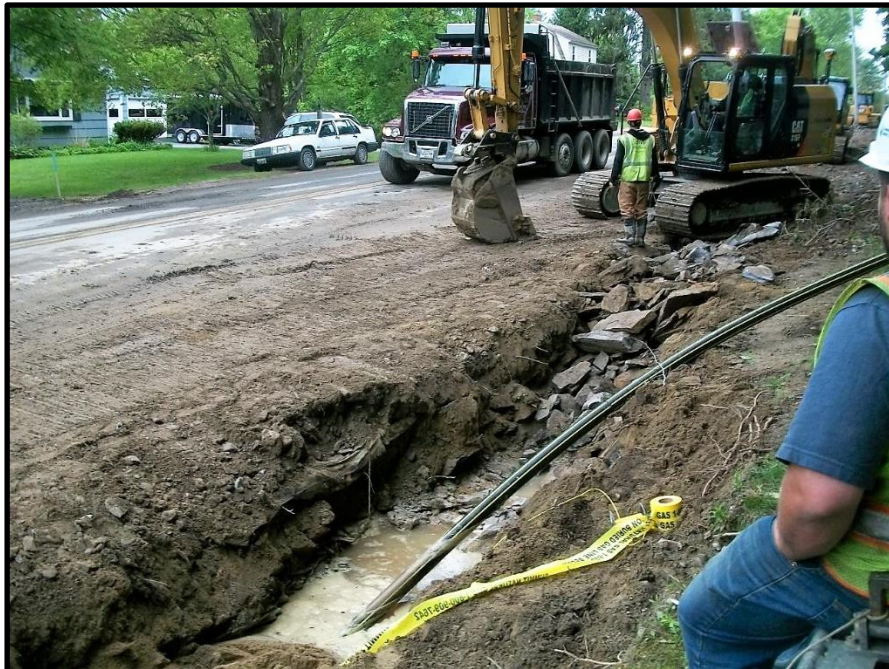
1. Owner – Town of Cumberland
2. Contractor - Storey Brothers
3. Engineer – Sevee & Maher Engineers, Inc.
4. File

BY: James, C. Manzer, P.E., PTOE

TITLE: FIELD ENGINEER



Photograph 1: Ledge removal for gas line behind Pole 337



Photograph 2: Installation at the end of the day at STA 76+00 just north of Pole 336 across from 151 Middle Road.



Photograph 3: Coordination of drilling hole for Pole 336 through ledge with gas line trenching and ledge removal.



Photograph 4: Breaking up ledge with the hoe ram attachment on the excavator most of the day.





Photograph 5: Facing ends of HDPE gas line pipe prior to fusion welding.



Photograph 6: Bedding gas line in sand behind new pole





Photograph 7: Using a plate compactor on sand over the gas line prior to backfilling.



Photograph 8: Trench ahead of pipe installation just north of Butterworth Farm Road





Photograph 9: Warning tape placed 24 inches above pipe and detection wire across from 125 Middle Road (Maloney).



Photograph 10: Exposed but undisturbed control point survey marker near existing edge of pavement in front of 126 Middle Road. Likely from an earlier road improvement project.