

DAILY CONSTRUCTION REPORT

Date: Monday, 06-05-2017
(Day 32)

PROJECT: Middle Road Improvements
CLIENT: Town of Cumberland
CONTRACTOR: Storey Brothers
PROJECT MANAGER: Dan Diffin, P.E.

WEATHER: Overcast, Drizzle
TEMP: Mid 50's
WIND: Light breeze
HUMIDITY: Moderate

FIELD FORCE

Name of Contractor	Supervisor	Non-Supervisor	Remarks
Storey Brothers	0	1 Equipment Operator 1 Driver/Laborer	Providing earthwork support to Summit. Driver acting as Laborer as needed
Summit Natural Gas	0	4 Installation Technicians	To install 4-inch plastic gas main
On-Target	1	2	Installing replacement poles

VISITORS

Time	Name	Representing	Remarks
8 AM	Skip McKay	CMP	Coordinate with Summit on Poles
8 AM	Eric Lindquist	CMP	Coordinate with Summit on Poles
8 AM	Peter Hakkila	On-Target	Coordinate with Summit on Poles

EQUIPMENT

2 Excavators – CAT 316F (used excavate for gas line) CAT 330D (reserved removing ledge with hoe ram)
1 Loader - Cat 930H (used to move material and equipment)
1 Roller – Ingersoll SD116DX
1 Dozer – CAT D5k2 (idle but to remain on-site for road work)

CONSTRUCTION ACTIVITIES

Set-up pump for run-off from 158 Middle Road into CB-7E.
Resumed ledge removal with hoe ram.
Resumed normal excavation then ledge re-emerged and resumed ledge removal with hoe ram.
Approximately 50% of the trench work was in ledge.
Near the end of the day, the gas line was placed in the length of trench that was created and backfilled as described earlier.
Installed 220 linear feet of 4-inch plastic natural gas main finishing the day near STA 76+00 just south of Pole 336.

QUALITY ASSURANCE

SME on-site to oversee progress, facilitate communications, and inspect erosion control measures.

DISTRIBUTION:

- 1 SME
- 2 Town of Cumberland
- 3 Storey Brothers, Inc.
- 4 Summit Natural Gas
- 5 Central Maine Power

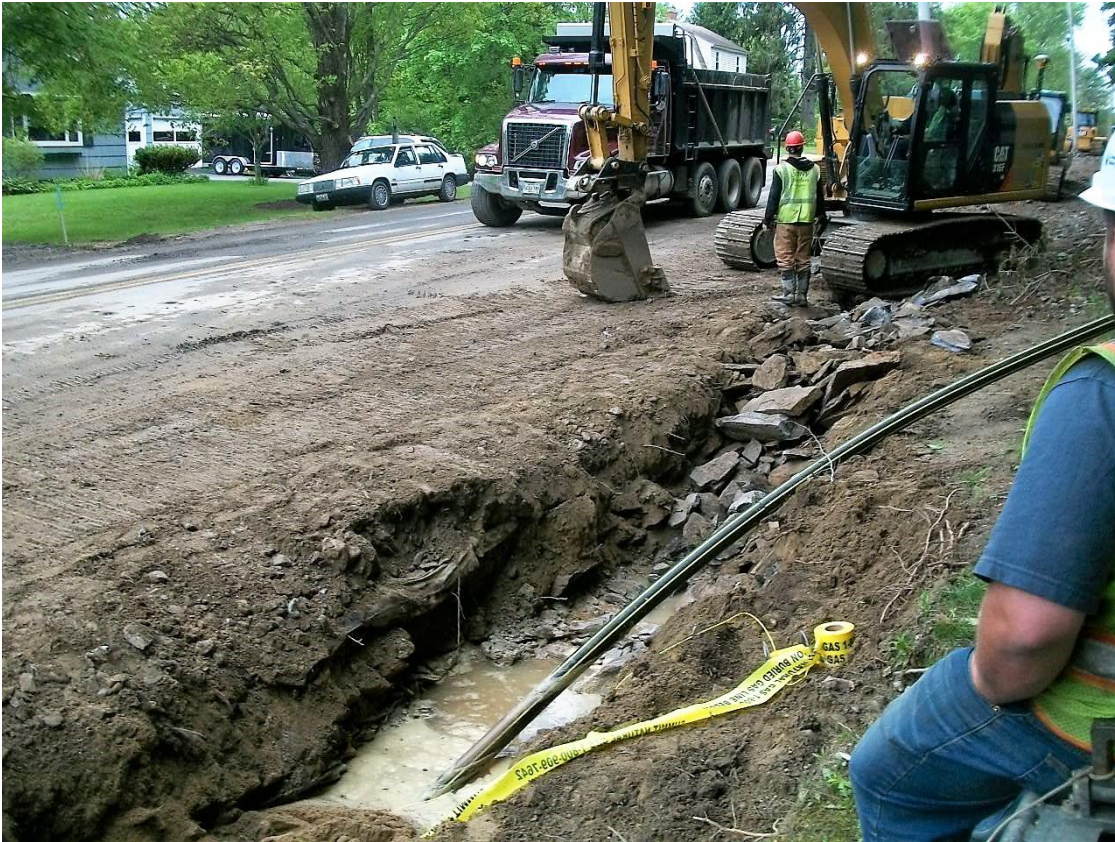
PAGE 1 OF 2

BY: Jim Manzer, P.E., PTOE TITLE: Project Engineer

SEVEE & MAHER ENGINEERS, INC.
CONSTRUCTION PHOTOS
June 5, 2017



Gas line trench alignment south of Pole 337 (left). Close-up of ledge removal at same location (right).



Installation at the end of the day at STA 76+00 just north of Pole #336 across from 151 Middle Road.