

DAILY CONSTRUCTION REPORT

Date: Thursday, 06-29-2017
(Day 51)

PROJECT: Middle Road Improvements
CLIENT: Town of Cumberland
CONTRACTOR: Storey Brothers
PROJECT MANAGER: Dan Diffin, P.E.

WEATHER: Mostly Cloudy
Occasional Drizzle
TEMP: Low 70's
WIND: Light Breeze
HUMIDITY: Mildly Humid

FIELD FORCE

Name of Contractor	Supervisor	Non-Supervisor	Remarks
Glidden Paving	1 – Bob Harvey	6	Supervisor, 4 on Paver, 3 Rollers,
Ace Security		4 Flaggers	2 Flagger at Tuttle end, 1 Flagger at southern end, & 4 th Flagger to cover breaks and lunch.

VISITORS

Time	Name	Representing	Remarks

EQUIPMENT

1-Paver – RoadTec RP-195
1 Knockdown Roller – CAT CB54B
1 Rubber Tire Roller – BOMAG BW 24R
1 Finishing Roller – Dynapac CC422HF

CONSTRUCTION ACTIVITIES

Started in southbound lane of Tuttle Road intersection hand placing pavement at joint and along radius at southwest corner of intersection setting up for "16-foot wide pull" with the paving machine.
Placed 2-inch thick course of 19.5mm pavement mat 16 feet wide. Paving supported by 10 dump trucks each typically loaded with 22 Tons of Hot Mix Asphalt originating from the Pike plant in Westbrook. See "ticket" from last load at the end of this report.
Paved the western side of road in a southerly direction to STA 61+75 (Casey Driveway at 121 Middle Road) then switched to the east (northbound) side of the road and paved in a northerly direction back to Tuttle Road.
A knockdown roller was used for initial compaction. A rubber tired roller then followed to make sure the mix was uniformly compacted into any uneven surfaces that may have been bridged by the steel roll of the knockdown roller. Finally, a finishing roller provided the final compaction to smooth any surface agitation caused by the rubber tire roller.
At the end of the day a small ramp of recycled pavement millings was placed at the lip of the Tuttle Road interface.
A total of 42 loads were placed totaling 865.5 Tons along northern 2,175 feet (0.41 miles) of the project.

QUALITY ASSURANCE

SME on-site to oversee progress, facilitate communications, and inspect pavement operations.

DISTRIBUTION:

- 1 SME
- 2 Town of Cumberland
- 3 Storey Brothers, Inc.
- 4 Summit Natural Gas
- 5 Central Maine Power

PAGE 1 OF 4

BY: Jim Manzer, P.E., PTOE TITLE: Field Engineer

SEVEE & MAHER ENGINEERS, INC.
CONSTRUCTION PHOTOS
June 29, 2017

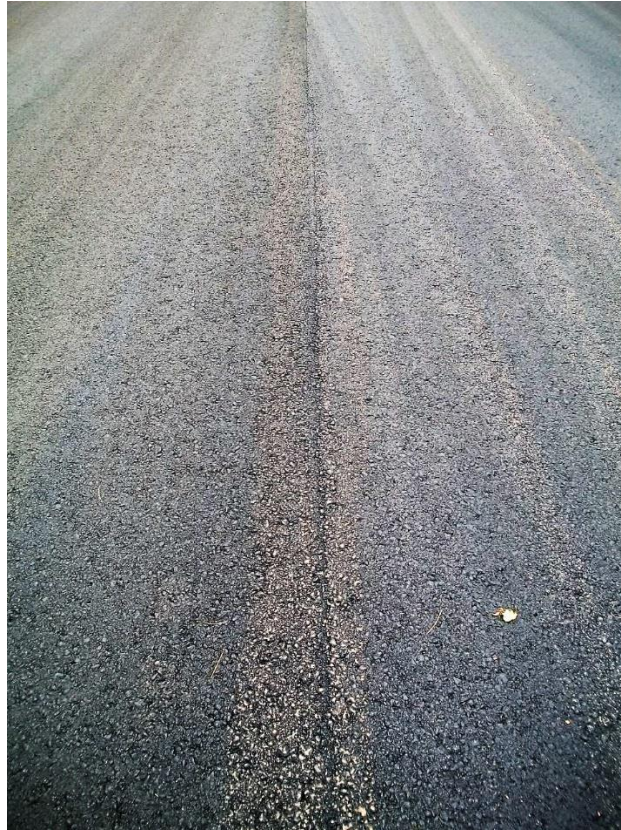


Hand placing along irregular joint at the Tuttle Road intersection at the start of day.



Knockdown roller following behind the paver soon after the operation got underway.

SEVEE & MAHER ENGINEERS, INC.
CONSTRUCTION PHOTOS
June 29, 2017



Close up depicting a "tight mat" and a quality longitudinal joint between north and southbound lanes.



View near the end of the day depicting the Rubber Tire roller following behind the knockdown roller. Finishing roller further behind the rubber tire roller.



Pike Industries Inc.
3 Eastgate Park Road
Belmont NH 03220
603-527-5100

Ticket #: 73017870



VERSION 0.00

Plant ID:04730 Westbrook ME

Weighmaster Name: DYLAN HALLETT

SOLD TO Customer: 24960 GLIDDEN EXC. & PAVING, INC. 326 New Portland Road Gorham ME 04038 Cust P.O. #:		Job: FOB2177134 Zone: P730 Middle Rd, Town of Cumberland, ME 2 Job Phase:	Truck Info Truck #: ZGLID131 Type: 106 License: Hired Id: PICKED UP
PRODUCT ID 102	TONS 21.98 Ton	DESCRIPTION 50 gyr 19mm	DATE TIME 6/29/2017 13:45

Loaded from Silo: 3

Loads: 42.00 **Accum. Amount:** 865.52 Ton 785.19 Mg

OUT	Gross:	72,780 lb	33.01 Mg	(Scale 5)
IN	Tare:	28,820 lb	13.07 Mg	(Scale 5)
	Net:	43,960 lb	19.94 Mg	

I have inspected my load and this ticket.
Both are accurate and correct.

Driver Name: _____

NOTICE: CUSTOMERS ARE RESPONSIBLE FOR COMPLIANCE WITH ALL FEDERAL, STATE, AND LOCAL LAWS, ORDINANCES, RULES AND REGULATIONS, INCLUDING BUT NOT LIMITED TO THOSE RELATING TO INSPECTIONS, WEIGHT LIMITATIONS, TARPS, ALL APPLICABLE INSPECTION AUTHORITIES, AND THE VEHICLE CODE. DRIVERS AGREE TO INDEMNIFY AND HOLD HARMLESS PIKE INDUSTRIES INC, ITS SUBSIDIARIES AND DIVISIONS, REPRESENTATIVES, OFFICERS, DIRECTORS, AGENTS AND EMPLOYEES FROM ANY AND ALL LIABILITY RESULTING FROM VIOLATIONS. CUSTOMERS ARE RESPONSIBLE FOR ANY COLLECTION COSTS ASSOCIATED WITH THIS SALE

AN OLDCASTLE COMPANY
"AN EQUAL OPPORTUNITY EMPLOYER"