

DAILY CONSTRUCTION REPORT

Date: Monday, 07-17-2017
(Day 59)

PROJECT: Middle Road Improvements
CLIENT: Town of Cumberland
CONTRACTOR: Storey Brothers
PROJECT MANAGER: Dan Diffin, P.E.

WEATHER: Mostly Sunny
TEMP: Mid 70's
WIND: Sea breeze
HUMIDITY: Mildly Humid

FIELD FORCE

Name of Contractor	Supervisor	Non-Supervisor	Remarks
Storey Brothers	1	2	Supervisor operating Excavator or Dozer. Laborers operating Excavator, Loader & Roller as needed
Ace Security		2	1 Flagger at each end of road work
Summit natural Gas	1	3	Fused and tested pipe for installation
Lucas Tree Service	1	4	2 Crews until noon
@Work Personnel Services		2	1 Flagger at each end of tree work

VISITORS

Time	Name	Representing	Remarks

EQUIPMENT

1 Mini-Excavator – Komatsu pc78us (used excavating trench for gas line)
1 Excavators – CAT 290D (backfill gas trench with sand)
1 Dozer – CAT D5K2 (used to place gravel dumped from trucks)
1 Loader – CAT 930H (used of transferring material and equipment)
1 Roller – Ingersoll SD116DX (used to compact gravel before opening to traffic)
2 Boom Trucks – 1 standard and 1 extended boom for tree cutting. Both with chipper trailer.

CONSTRUCTION ACTIVITIES

Excavate trench for gas line with mini-excavator and placed sand bedding. Summit crew placed fused pipe sections in trench with detection wire and covered with sand backfill. Placed detection tape on top of pipe, backfilled with sand to gravel subgrade, and placed Type D gravel to grade.
Tree crews continued southward and reached the road crew by mid-day.
By the end of the day the Summit crew installed 640 linear feet of 4-inch HDPE gas main.

QUALITY ASSURANCE

SME on-site to oversee progress, facilitate communications, and inspect erosion control measures.

DISTRIBUTION:

- 1 SME
- 2 Town of Cumberland
- 3 Storey Brothers, Inc.
- 4 Summit Natural Gas
- 5 Central Maine Power

PAGE 1 OF 3

BY: Jim Manzer, P.E., PTOE TITLE: Field Engineer

SEVEE & MAHER ENGINEERS, INC.
CONSTRUCTION PHOTOS
July 17, 2017



Excavating southward along western edge of road for new gas main approach gully.

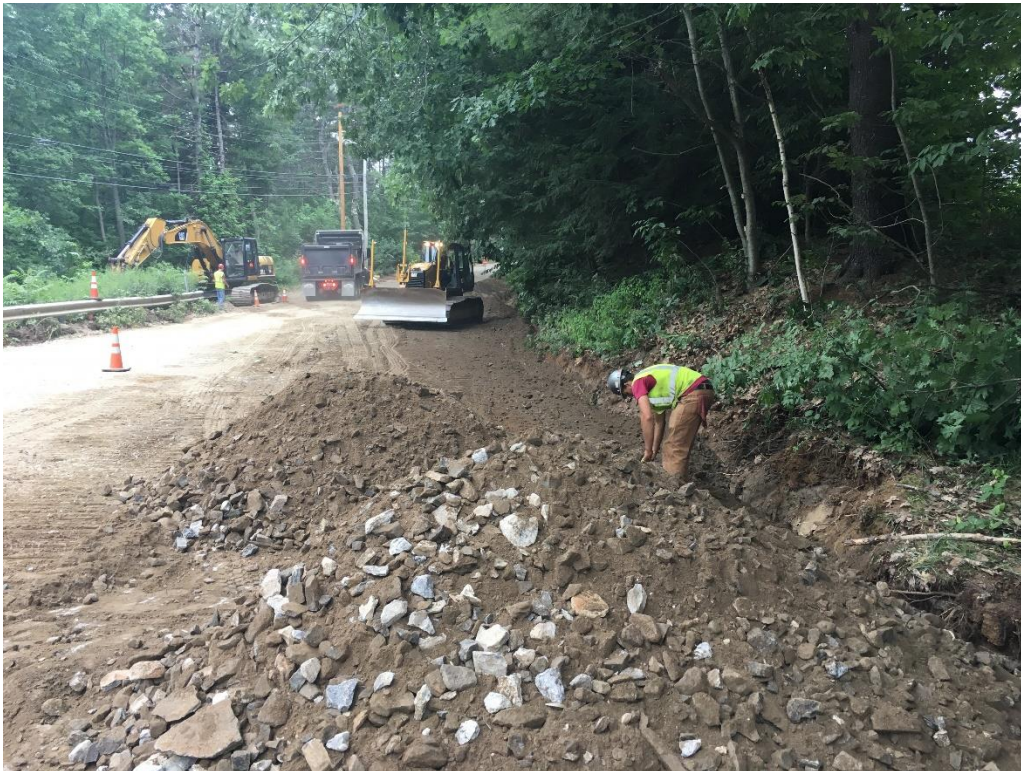


Two (2) tree crews completed trimming of trees north of road crew in Chernery Brook Gully.

SEVEE & MAHER ENGINEERS, INC.
CONSTRUCTION PHOTOS
July 17, 2017



Finishing up 640 linear feet of gas main installation near the end of the day at STA 53+00.



Placing Type D gravel over sand of gas main trench with dozer on south side of gully.