

**WEEKLY CONSTRUCTION REPORT**

PROJECT: CDD/ WOODWASTE LANDFILL

PERIOD ENDING: WED., 19 July 2017

JOB NO.: 16278.02

CLIENT: TOWN OF CUMBERLAND

CONTRACTOR: AH GROVER, INC.

PROJECT MANAGER: BRIAN PIERCE

<b>AVERAGE FIELD FORCE</b>			
<b>Name of Contractor</b>	<b>Non-manual</b>	<b>Manual</b>	<b>Remarks</b>
AH GROVER, INC.	0	3	
	0		
<b>VISITORS</b>			
<b>Date</b>	<b>Name</b>	<b>Representing</b>	<b>Remarks</b>
<b>TYPICAL EQUIPMENT ON-SITE</b>			
2 Dozers - Deere 650K LGP and 750 J			
1 Dump – Terex TA 30			
1 Excavator – Volvo FC360B LC			
1 Loader- Deere 624 K			
1 Roller – Ingersoll Rand Pro Pac Series 110			
<b>CONSTRUCTION ACTIVITIES</b>			
Thurs. 7/13 – No work			
Fri. 7/14 – No work			
Sat. 7/15 & Sat. 7/16 – No Work.			
Mon. 7/17 – Placed erosion control measures and began clearing and grubbing			
Tues. 7/18 – Brush removal and preparing subgrade			
Wed. 7/19 – Removing material southwest of the compost pad and placing it in the southwestern corner of the landfill.			
<b>NEXT WEEK PROJECTED CONSTRUCTION ACTIVITIES</b>			
Thurs. 7/20 – Waste regrading			
Fri. 7/21 – Removing compost and beginning to remove compost pad			
Sat. 7/22 – Weekend No Work.			
Sun. 7/23 – Weekend No Work.			
Mon., 7/24 – Remove compost pad and prepare subgrade			
Tues. 7/25 – Remove compost pad and prepare subgrade			
Wed. 7/26 – Place cover over compost pad area			
<b>QUALITY ASSURANCE:</b>			
SME on-site to review overall progress, verify materials & quantities, and inspect erosion control measures.			

**DISTRIBUTION:**

1. Owner – Town of Cumberland
2. Contractor - AH Grover
3. Engineer – Sevee & Maher Engineers, Inc.
4. File

BY: Charles Burnham

TITLE: Field Engineer

SEVEE & MAHER ENGINEERS, INC.  
CONSTRUCTION PHOTOS  
July 13, 2017



Continued tree removal.

SEVEE & MAHER ENGINEERS, INC.  
CONSTRUCTION PHOTOS  
July 14, 2017



Chipping and loading brush pile into trail.



SEVEE & MAHER ENGINEERS, INC.  
CONSTRUCTION PHOTOS  
July 17, 2017



Placing silt fence and bark mulch berm for erosion control.





Clearing and grubbing inside clearing limits.



Woodwaste and CCD from landfill to be placed on site.



SEVEE & MAHER ENGINEERS, INC.  
CONSTRUCTION PHOTOS  
July 18, 2017



Waste regrading.



Brush and waste had been placed in lifts and is being covered.





Fill was trucked in from below compost pad and placed at edge of slope and pushed into place by dozer equiped with GPS.



SEVEE & MAHER ENGINEERS, INC.  
CONSTRUCTION PHOTOS  
July 19, 2017

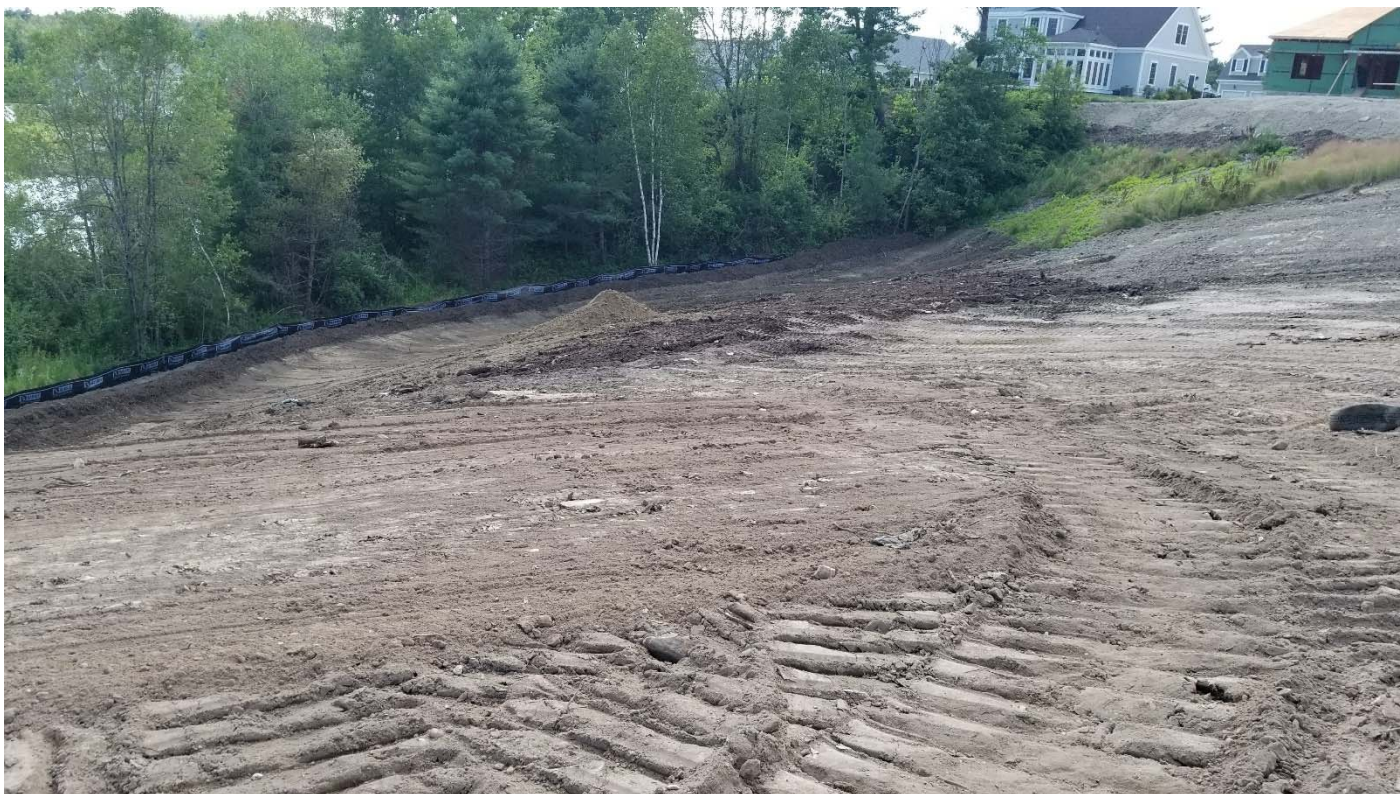


Fill excavated from below compost pad, placed at edge of slope, and pushed into place by dozer equipped with GPS. Wet area in the foreground.



The subgrade was compacted using a smooth barrel roller.





Fill continued to be placed in southwestern corner of the landfill, with compacted subgrade in the foreground.





Aerial photo from the end of work Wednesday the 19th of July 2017.