

Historical Society & Library Improvement Project



June 18, 2019

Historical Society & Library Improvement Project
Meeting #2 of 5







scott simons architects

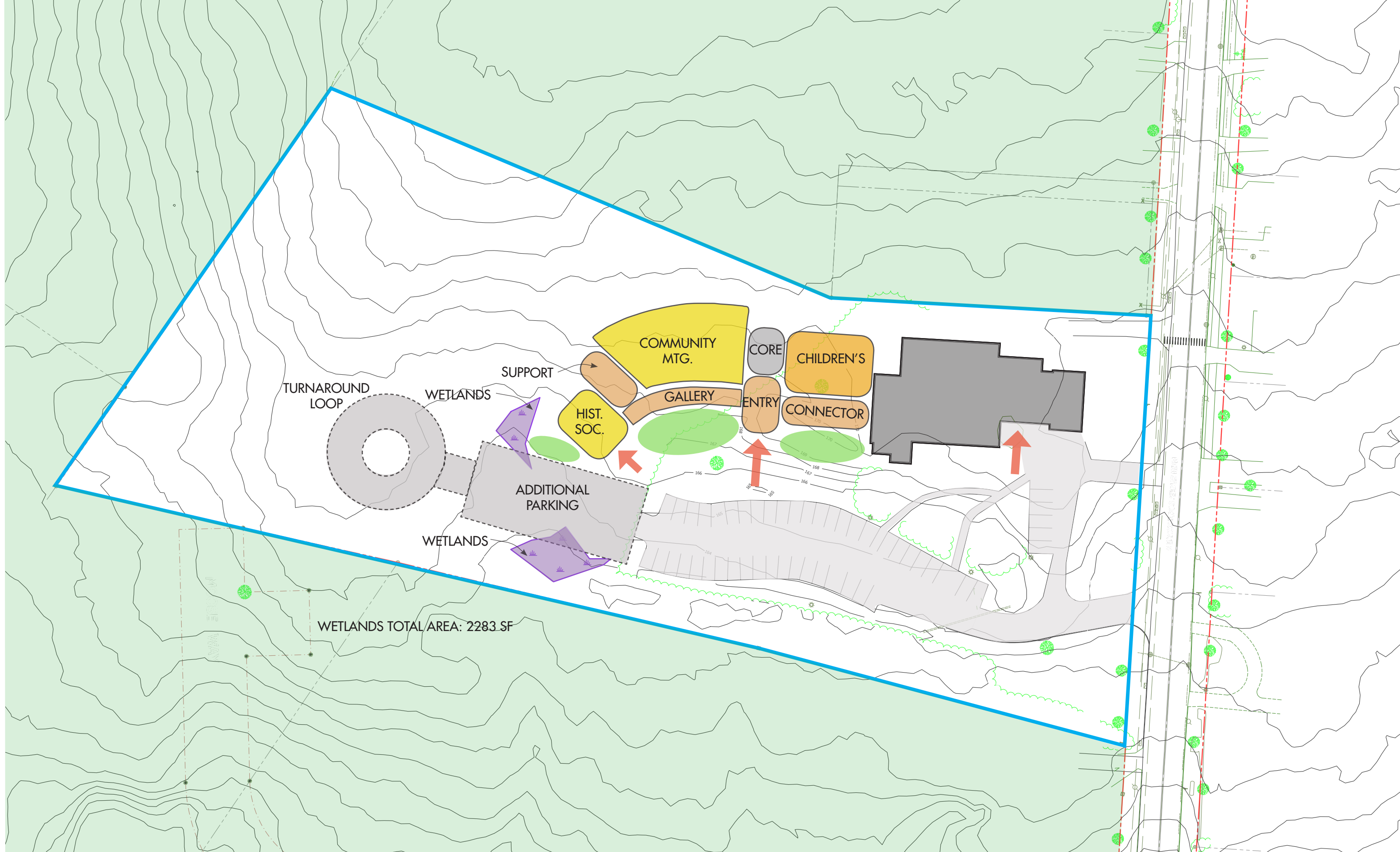
designed for human potential

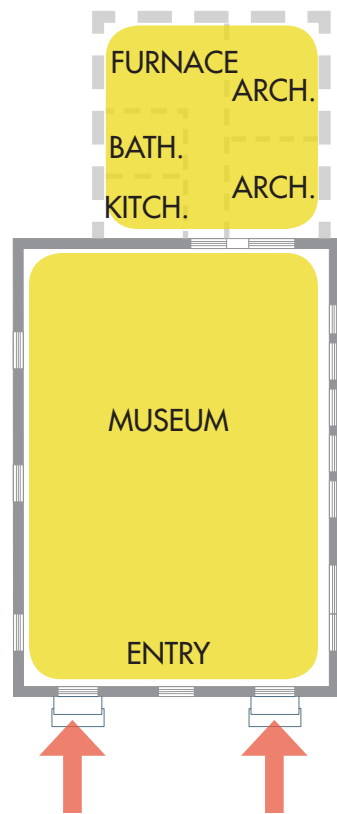
75 York Street, Portland, ME 04101
207.772.4656 www.SimonsArchitects.com

Existing Site

Town of Cumberland

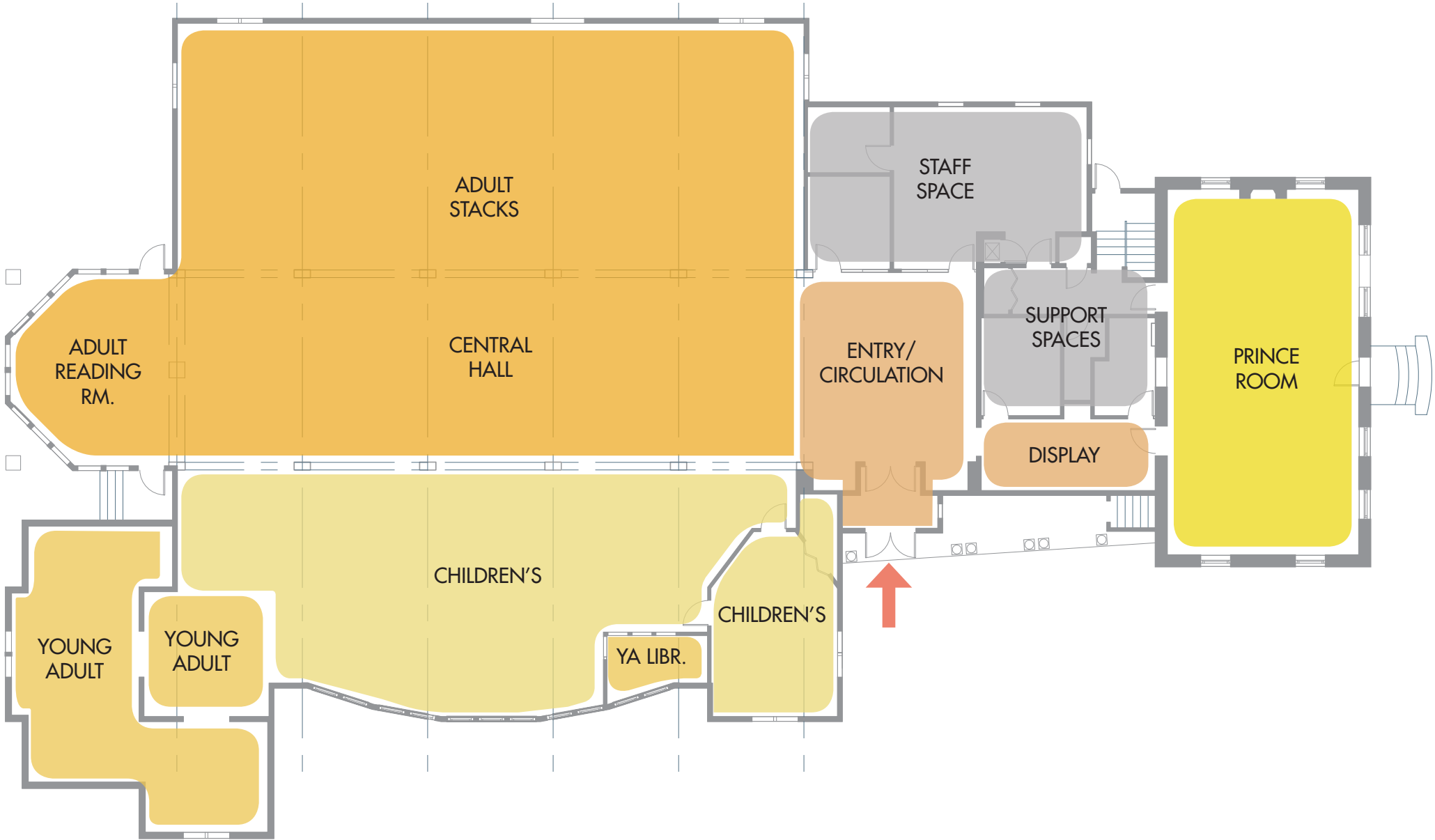
Cumberland, Maine
18 June 2019





HISTORIC SOCIETY
FLOOR PLAN

~1,050 sqft



PRINCE MEMORIAL LIBRARY
FLOOR PLAN

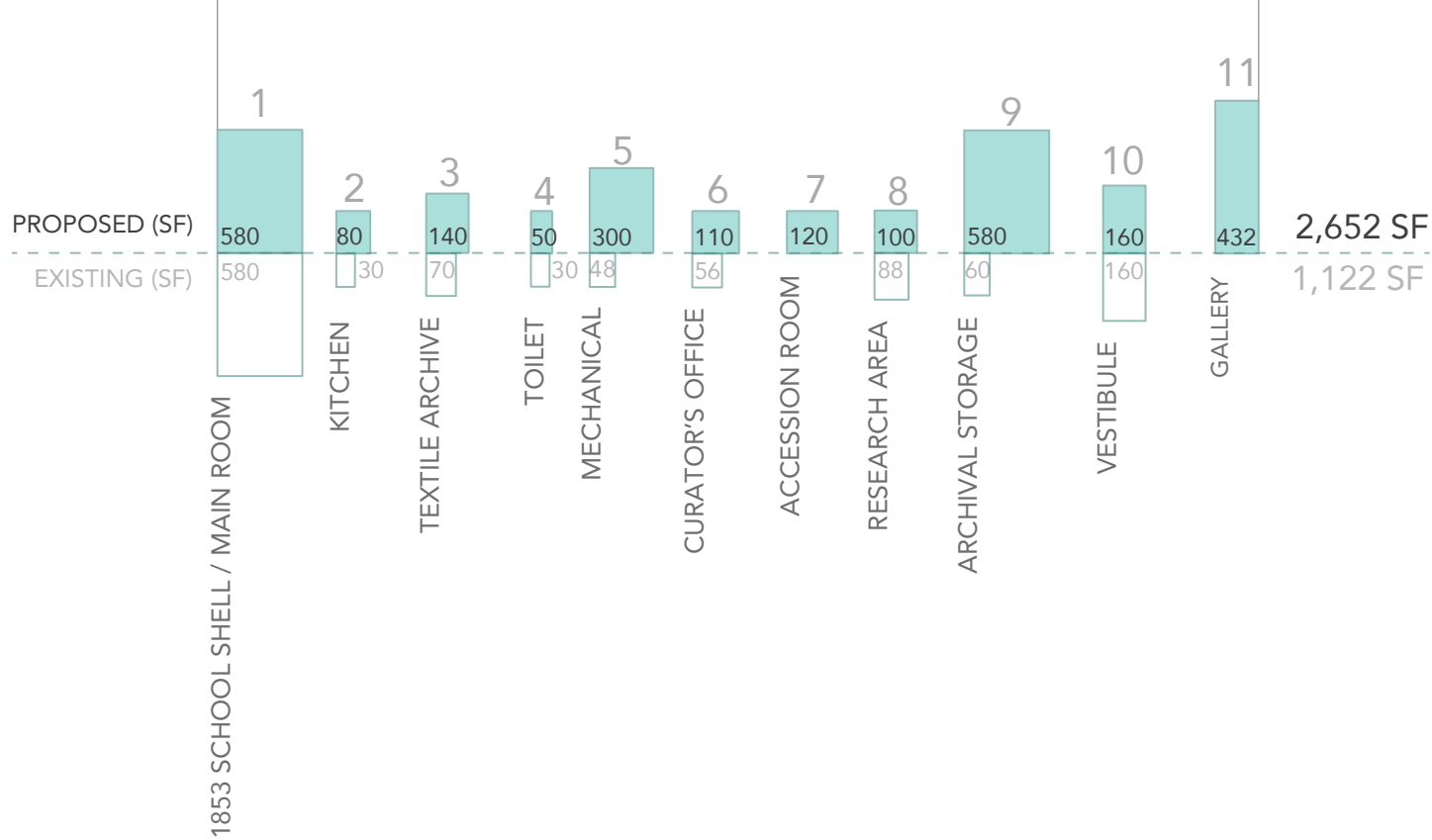
~10,800 sqft

Program Space		Existing SF	Program Increase (SF)	Proposed SF	Floor Level	Notes
Prince Memorial Library						
Entry / Vestibule		45	-	45	1	Shared space, see below
Circulation		530	300	830	1	
Staff Space		618	-	618	1	
Staff Bathroom		-	50	50	1	ADA compliant, main level access
Staff Break Room		30	90	120	1	
Restrooms		230	-	230	1	serve both CHS and PML, see below
Prince Room		1,008	-	1,008	1	
Adult Stacks		2,285	1,620	3,905	1	Adult take over existing Children's Space
Central Hall		1,628	-	1,628	1	
Adult Reading Room		420	-	420	1	
Children's Library		1,620	-	1,620	1	Relocated into expansion space
Children's Story Area		338	-	338	1	Relocated into expansion space
Children's Craft Area		(part of Children's)	180		1	
Children's Librarian / Staff		80	120	200	1	
Young Adult		890	110	1,000	1	
Media A/V		(integrated into Coll.)	-	-	1	
Library Storage		805	200	1,005	0, 1	
Book Sale Storage		560	-	560	0	Book sale space year-round
Town Archive		(incl. in Library Storage)	-	-	0	
Mechanical		160	-		0	Shared space, see below
	Subtotal:	11,247	2,670	13,577		

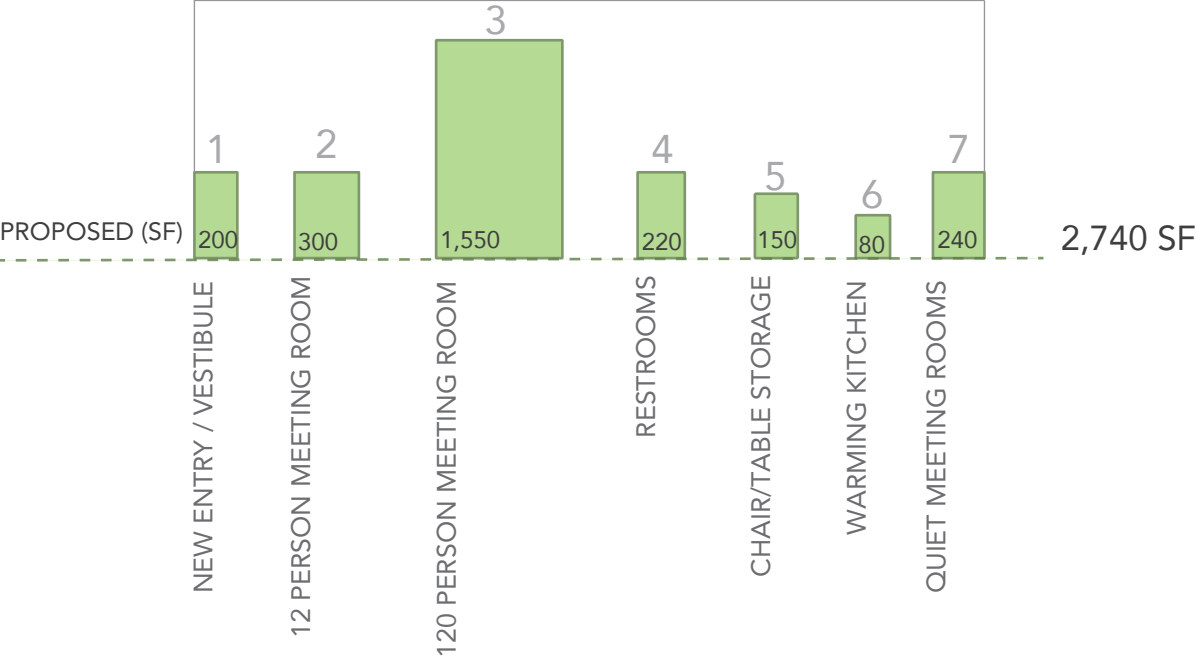
Program Space		Existing SF	Program Increase (SF)	Proposed SF	Floor Level	Notes
Cumberland Historical Society						
1853 School Shell / Main Room		580	-	580	1	Permanent collection, some rotating collection
Kitchen		30	50	80	1	
Textile Archive		70	70	140	0	Deep archival boxes on tall shelves, Hanging space, climate controlled
Toilet		30	20	50	0	ADA accessible
Mechanical		48	252	300	0	Shared mechanical space
Curator's Office		56	54	110	0	Includes cloak closet, desk, chairs & work space
Accession Room		(integrated into Main)	120	120	0	Needs computer station,m shelving, table for layour, 8 X 14
Research Area		88	12	100	1	Computer, work space
Archival Storage		60	520	580	0	Climate controlled
Vestibule		160	-	160	1	Maintain 2 separate historical entries, but also ADA entry
Gallery		-	432	432	1	
	Subtotal:	1,122	1,530	2,652		

Program Space		Existing SF	Program Increase (SF)	Proposed SF	Floor Level	Notes
Shared Spaces						
New Entry / Vestibule		-	200	200	1	
12 Person Meeting Room		-	300	300	1	
120 person Meeting Room		-	1,550	1,550	1	
Restrooms		-	220	220	1	
Chair / Table Storage		-	150	150	1	
Warming Kitchen		-	80	80	1	
Quiet Meeting Rooms		-	240	240	1	
	Subtotal:	0	2,740	2,740		
	Subtotal:	12,369	6,940	18,969		
Net to Gross		1,807		3,794		approximately 20%
TOTAL GSF		14,176		22,763		

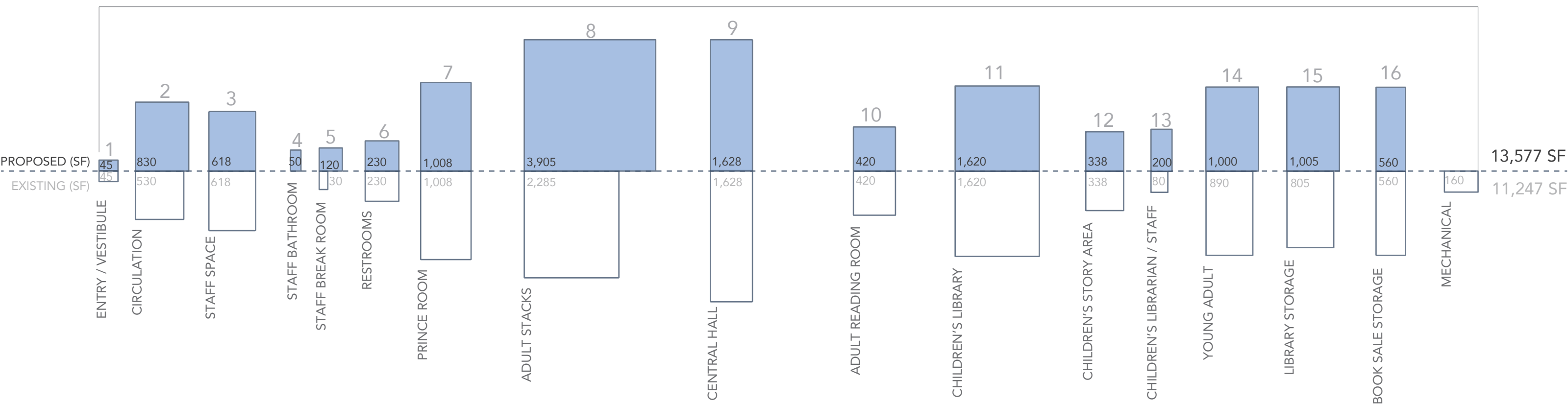
CUMBERLAND HISTORICAL SOCIETY

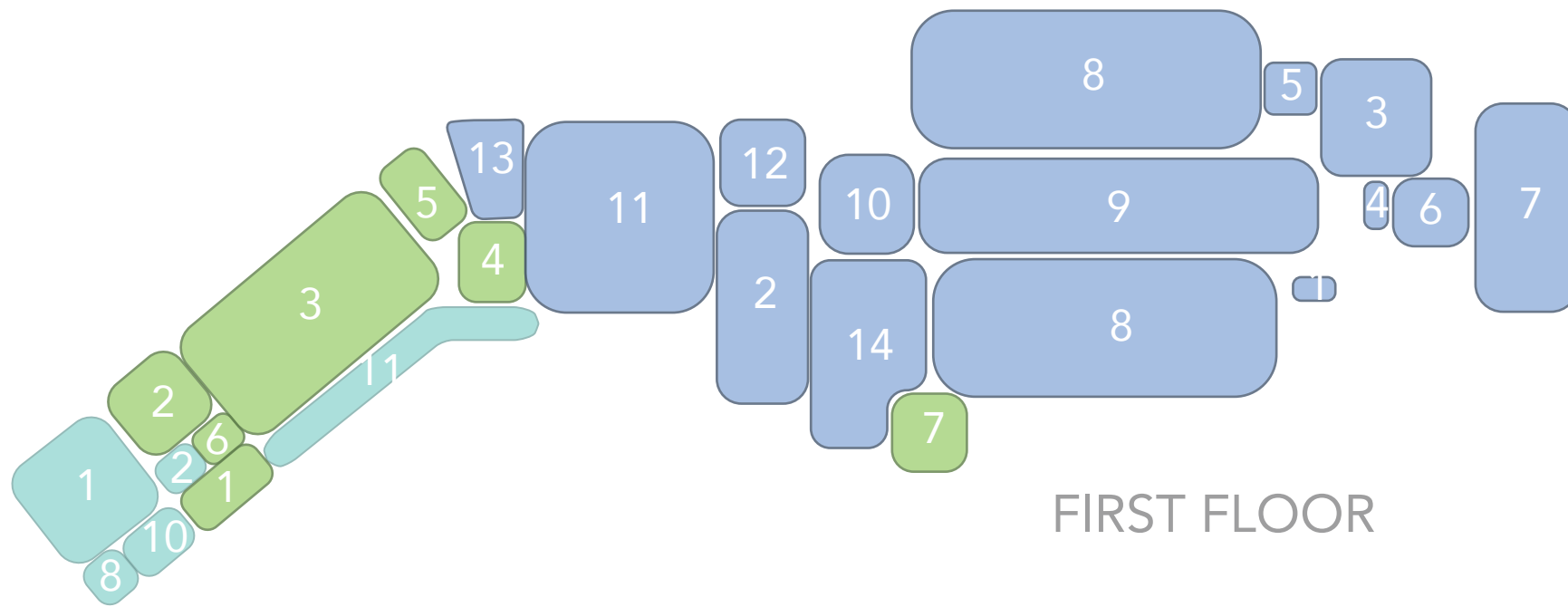


SHARED SPACES

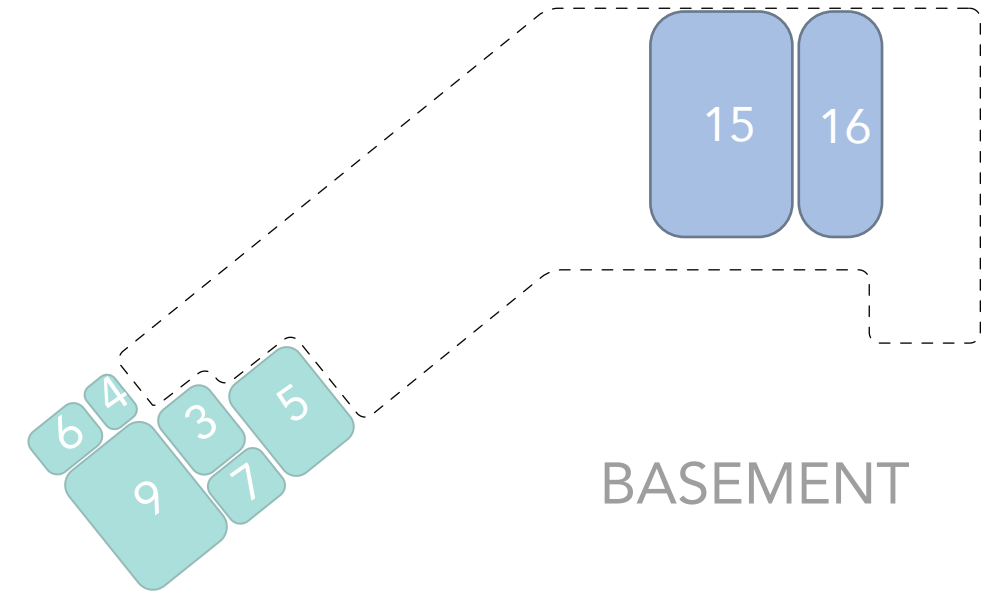


PRINCE MEMORIAL LIBRARY





FIRST FLOOR



BASEMENT

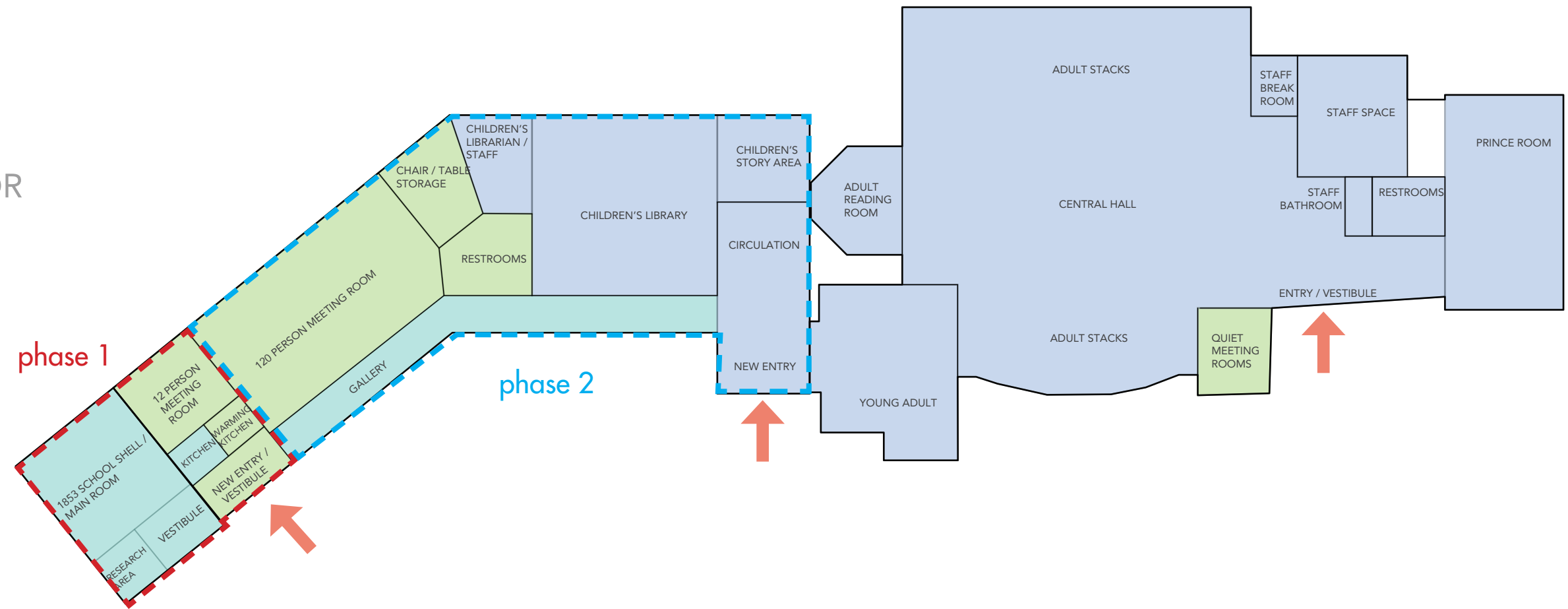
- 1 ENTRY / VESTIBULE
- 2 CIRCULATION
- 3 STAFF SPACE
- 4 STAFF BATHROOM
- 5 STAFF BREAKROOM
- 6 RESTROOMS
- 7 PRINCE ROOM
- 8 ADULT STACKS

- 9 CENTRAL HALL
- 10 ADULT READING ROOM
- 11 CHILDREN'S LIBRARY
- 12 CHILDREN'S STORY AREA
- 13 CHILDREN'S LIBRARIAN / STAFF
- 14 YOUNG ADULT
- 15 LIBRARY STORAGE
- 16 BOOK SALE STORAGE

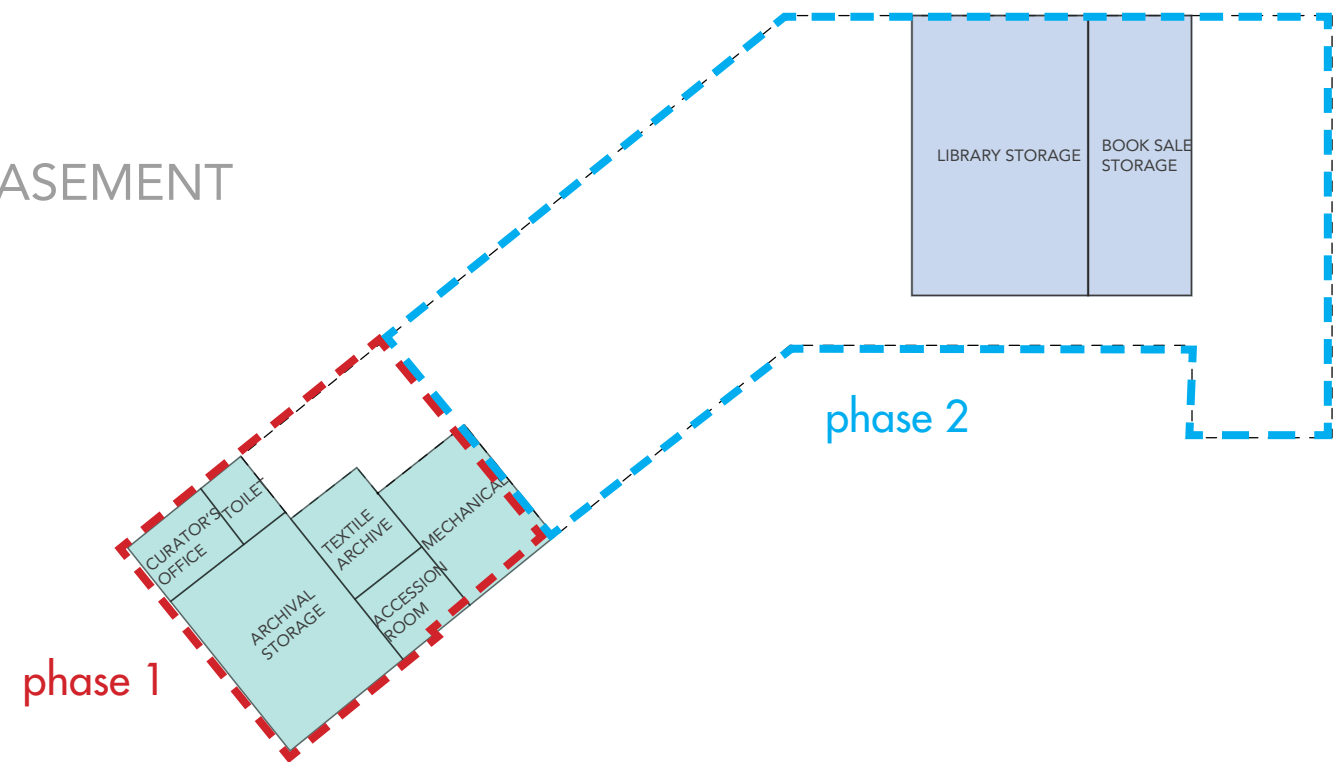
- 1 1853 SCHOOL SHELL / MAIN ROOM
- 2 KITCHEN
- 3 TEXTILE ARCHIVE
- 4 TOILET
- 5 MECHANICAL
- 6 CURATOR'S OFFICE
- 7 ACCESSION ROOM
- 8 RESEARCH AREA
- 9 ARCHIVAL STORAGE
- 10 VESTIBULE
- 11 GALLERY

- 1 NEW ENTRY / VESTIBULE
- 2 12 PERSON MEETING ROOM
- 3 120 PERSON MEETING ROOM
- 4 RESTROOMS
- 5 CHAIR / TABLE STORAGE
- 6 WARMING KITCHEN
- 7 QUIET MEETING ROOMS

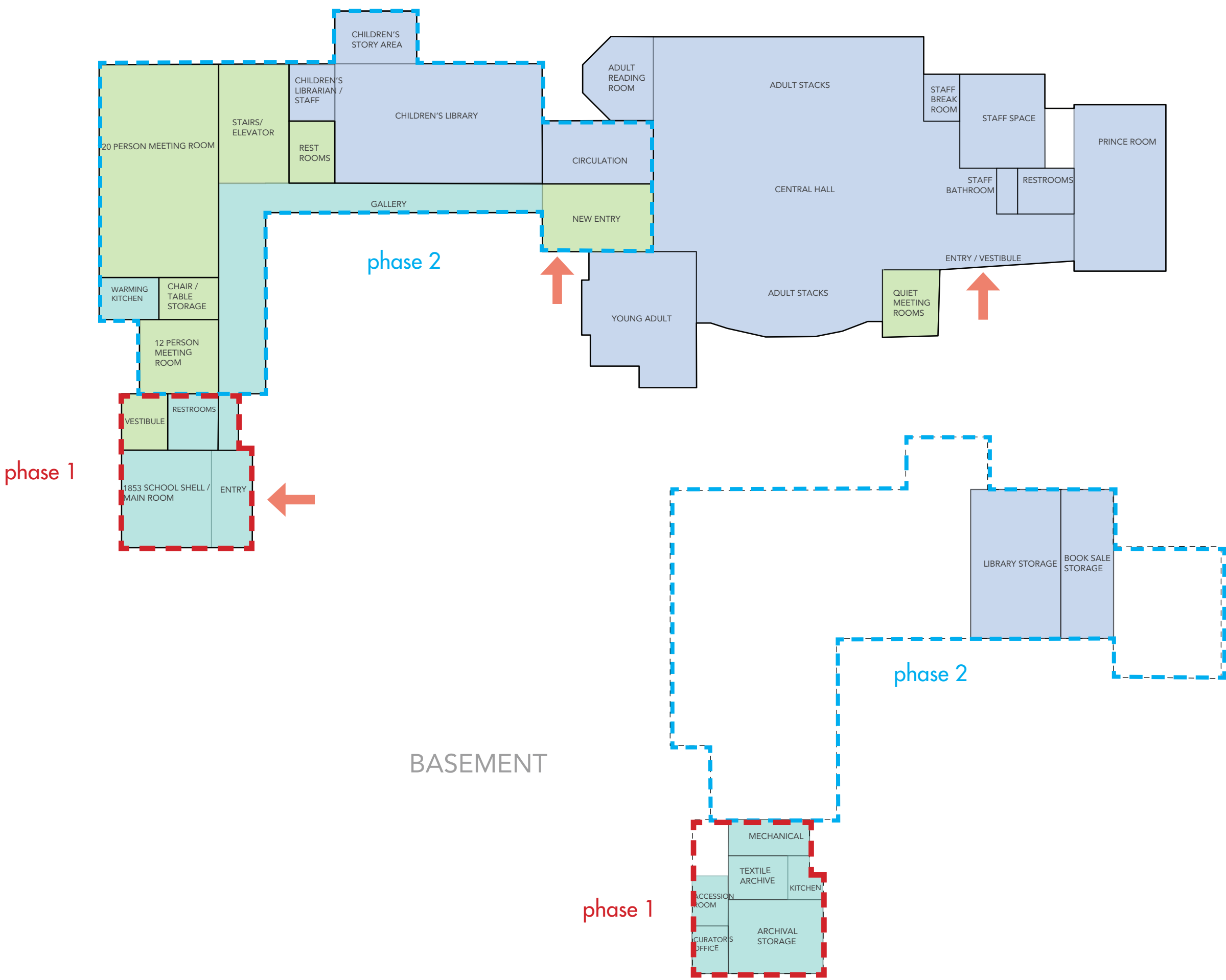
FIRST FLOOR

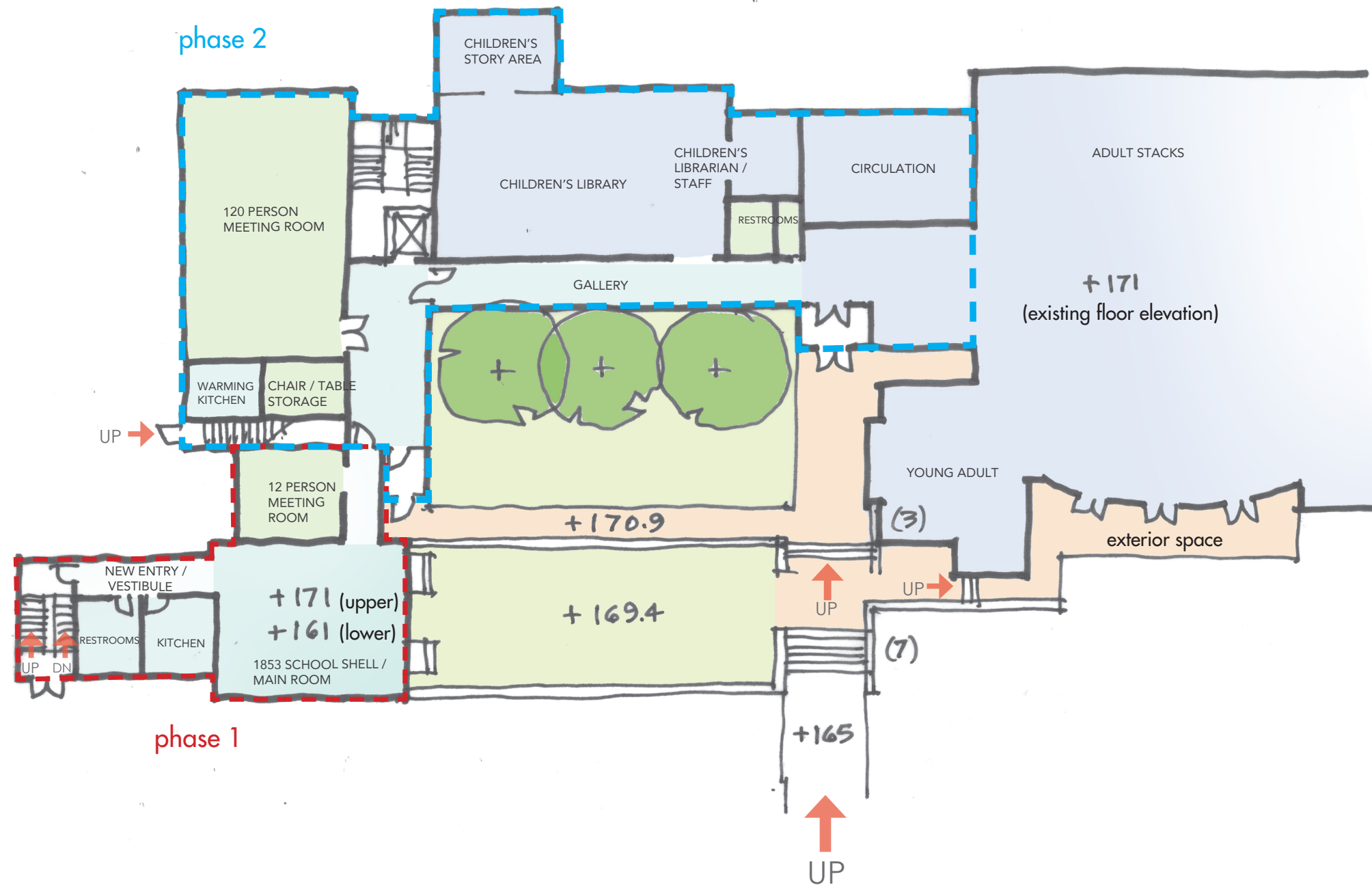


BASEMENT

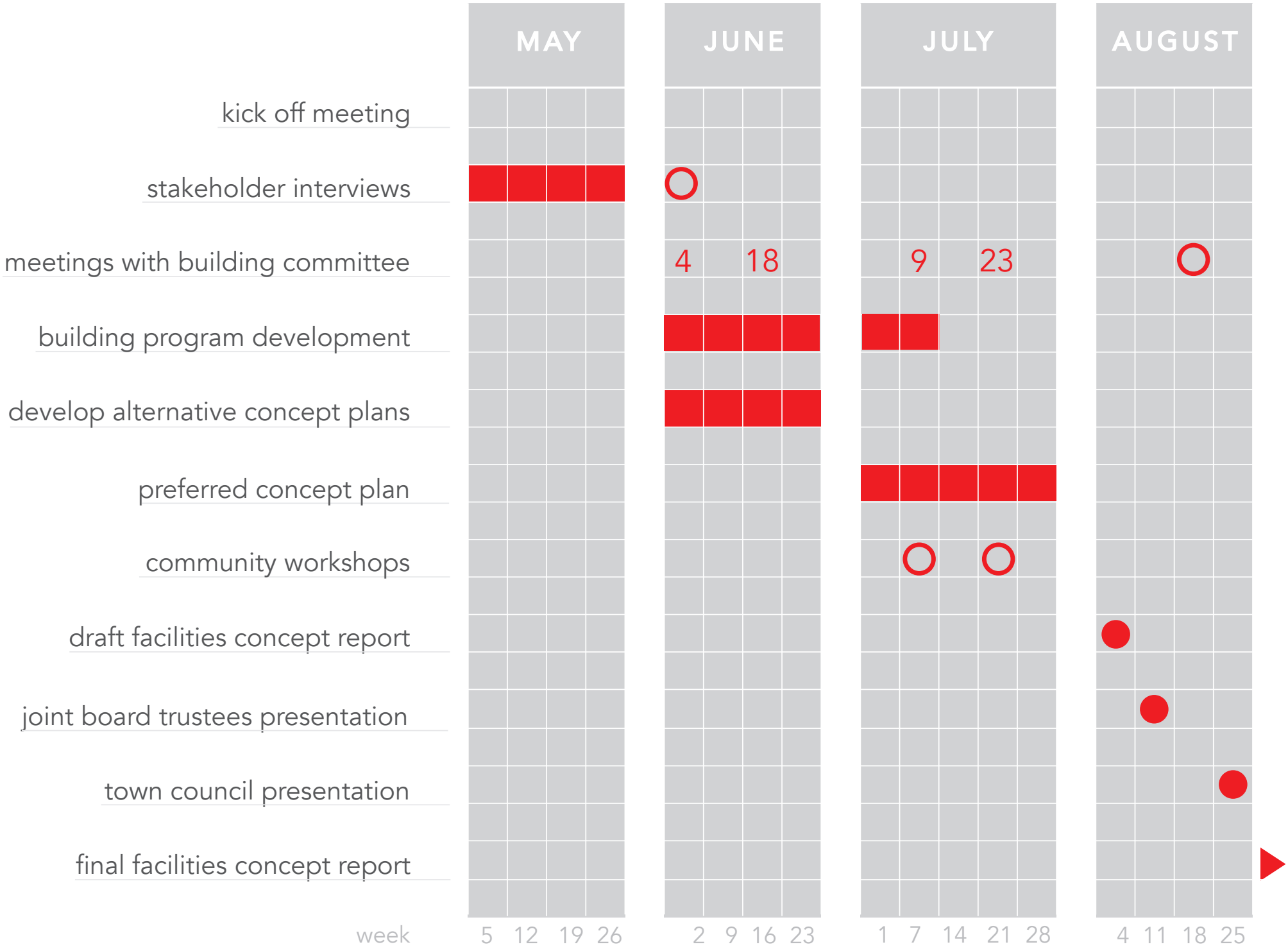


FIRST FLOOR





CHS & PML EXPANSION | PROPOSED SPACE PLANNING/ PROGRAM DEVELOPMENT SCHEDULE



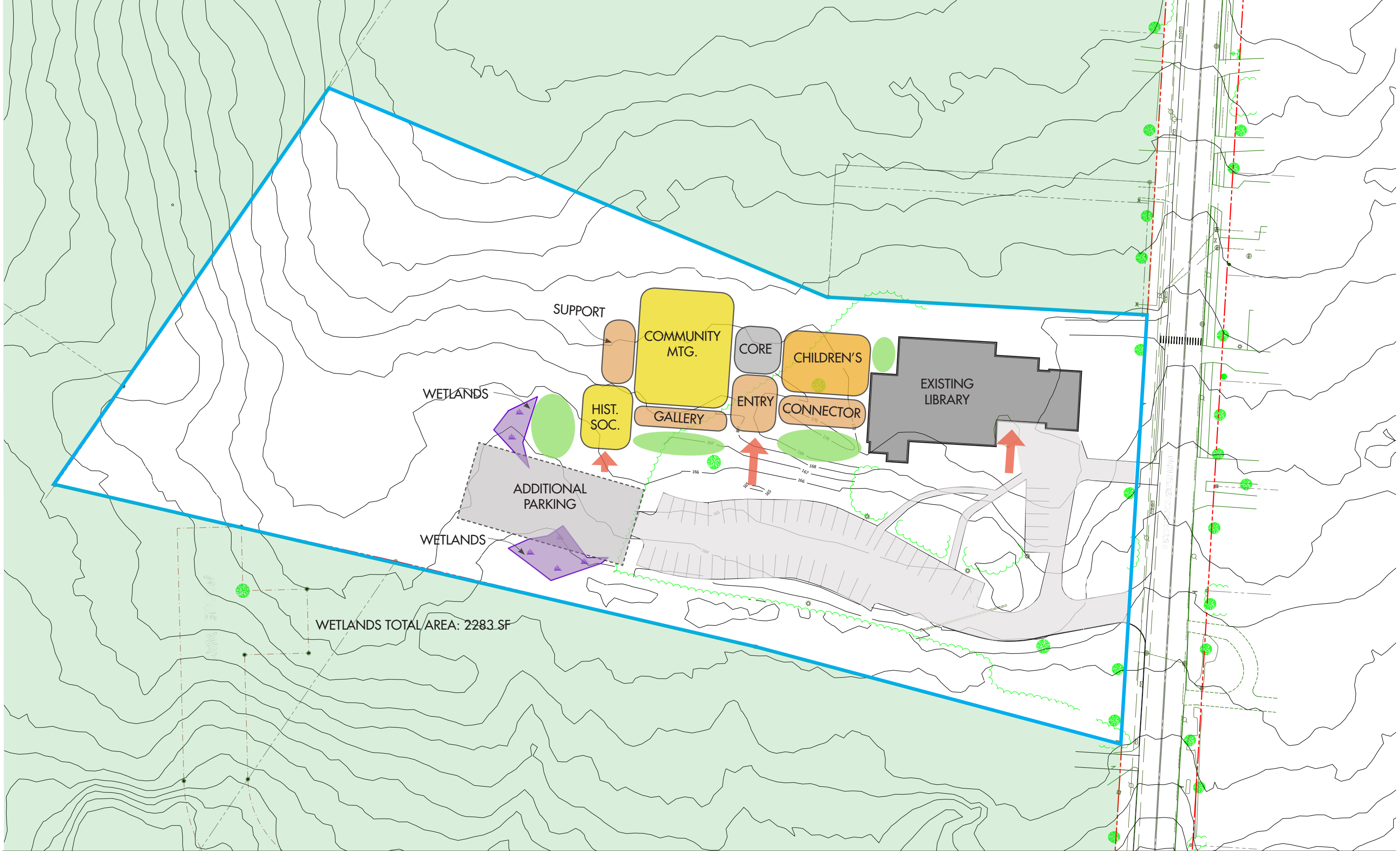
Historical Society & Library Improvement Project

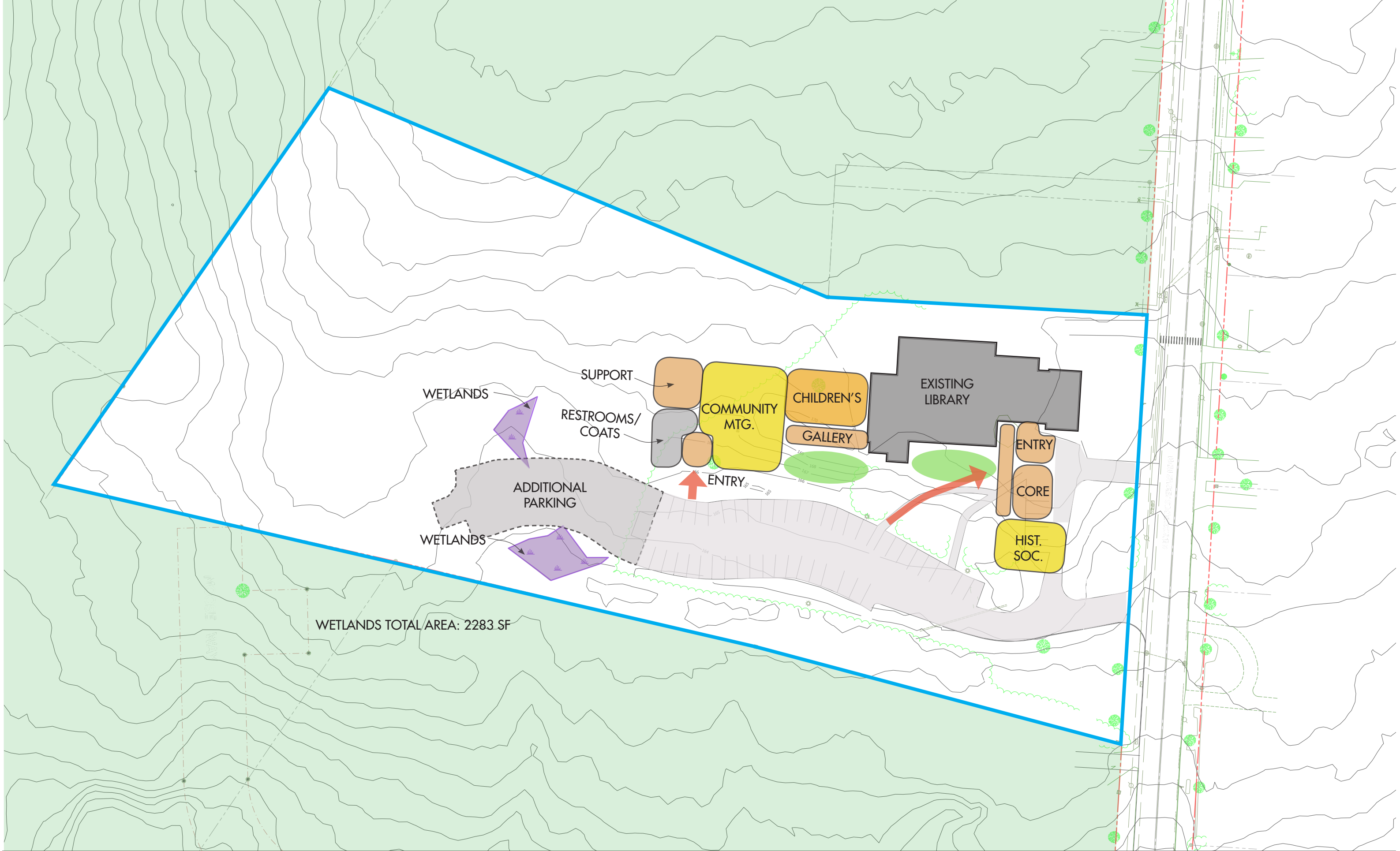


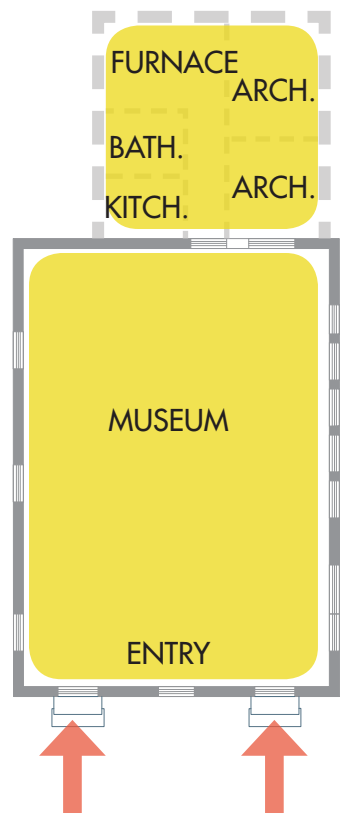
June 18, 2019

Historical Society & Library Improvement Project
Meeting #2 of 5

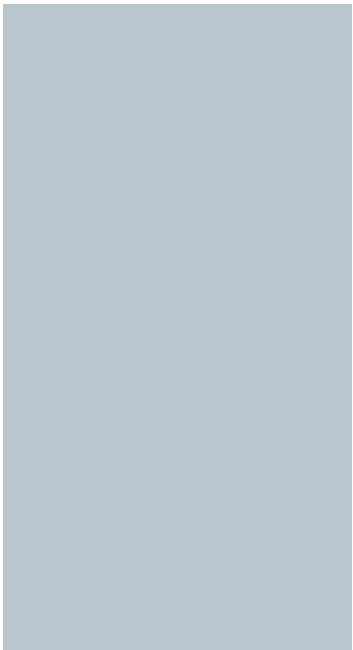








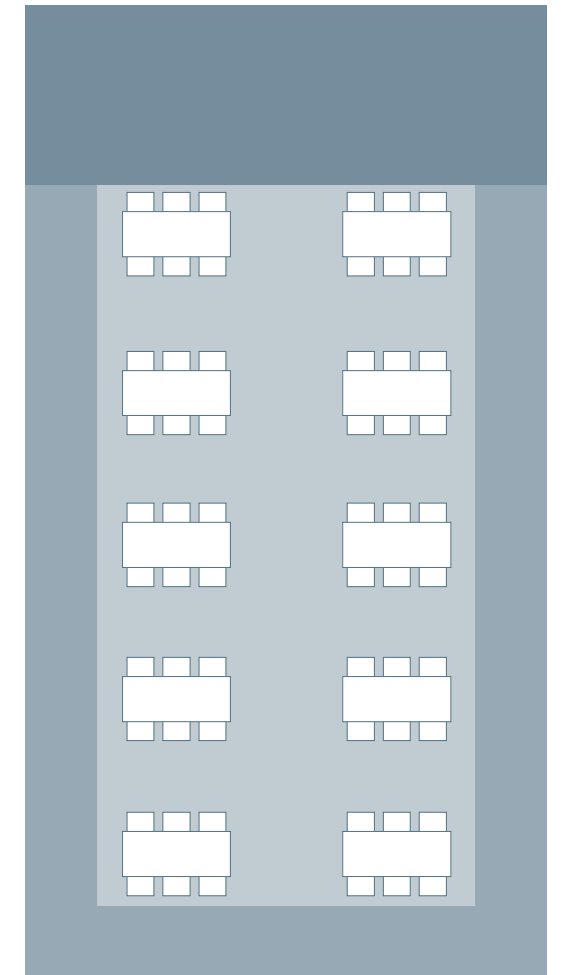
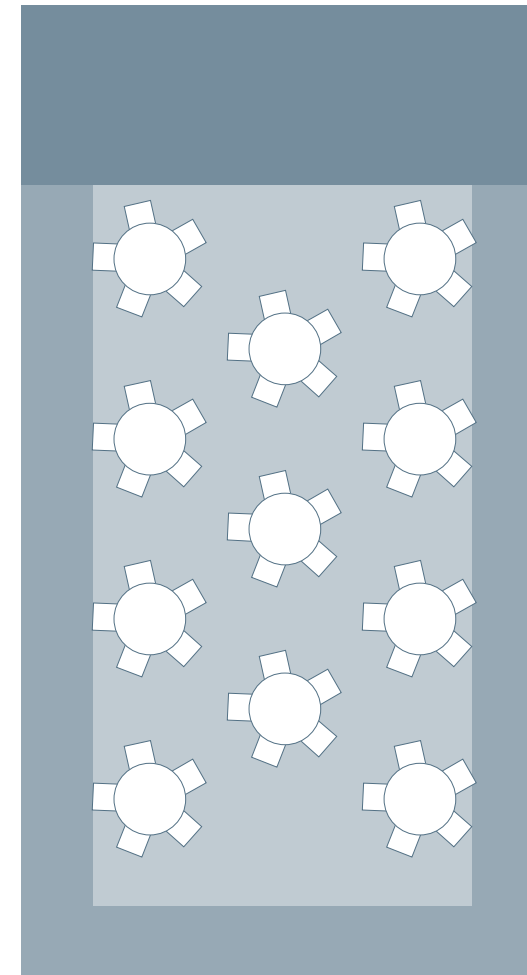
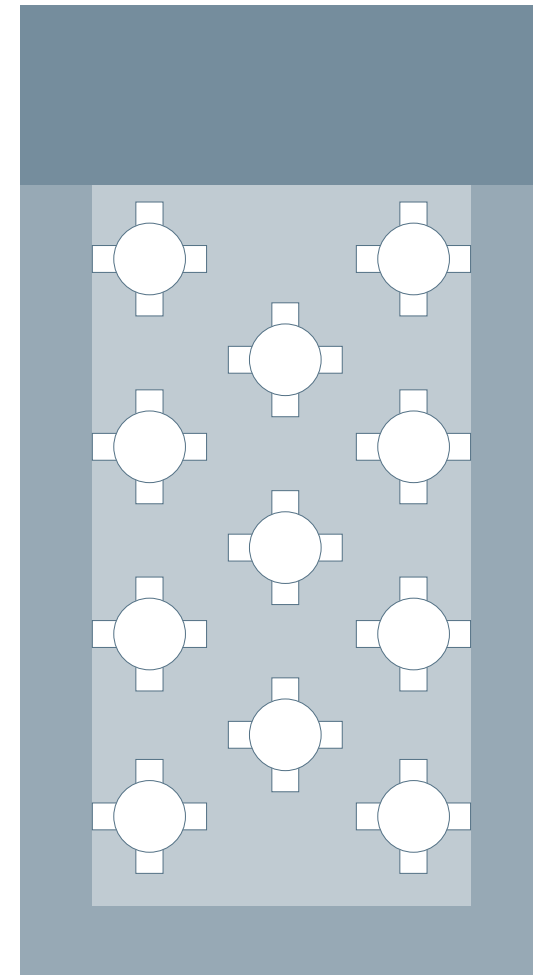
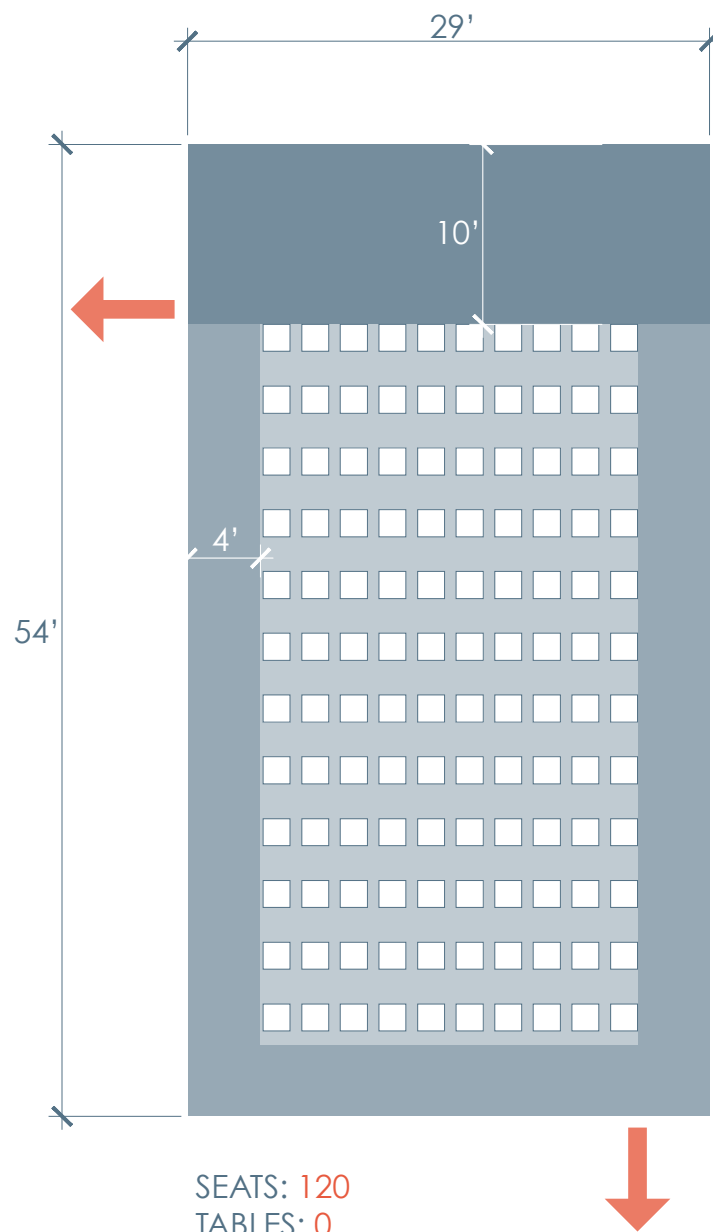
HISTORIC SOCIETY
FLOOR PLAN
~1,050 sqft



MEETING ROOM
~1,550 sqft



PRINCE MEMORIAL LIBRARY
FLOOR PLAN
~10,800 sqft



AREA: 29' X 54' = 1,566 SF

OCCUPANCY: 1,566 SF / 7 SF = 223.7

REQUIRED PLUMBING FIXTURES:

Water Closet:
M: 1 F: 3

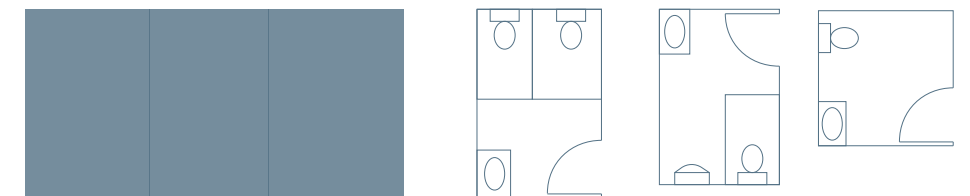
Urinals:
M: 1

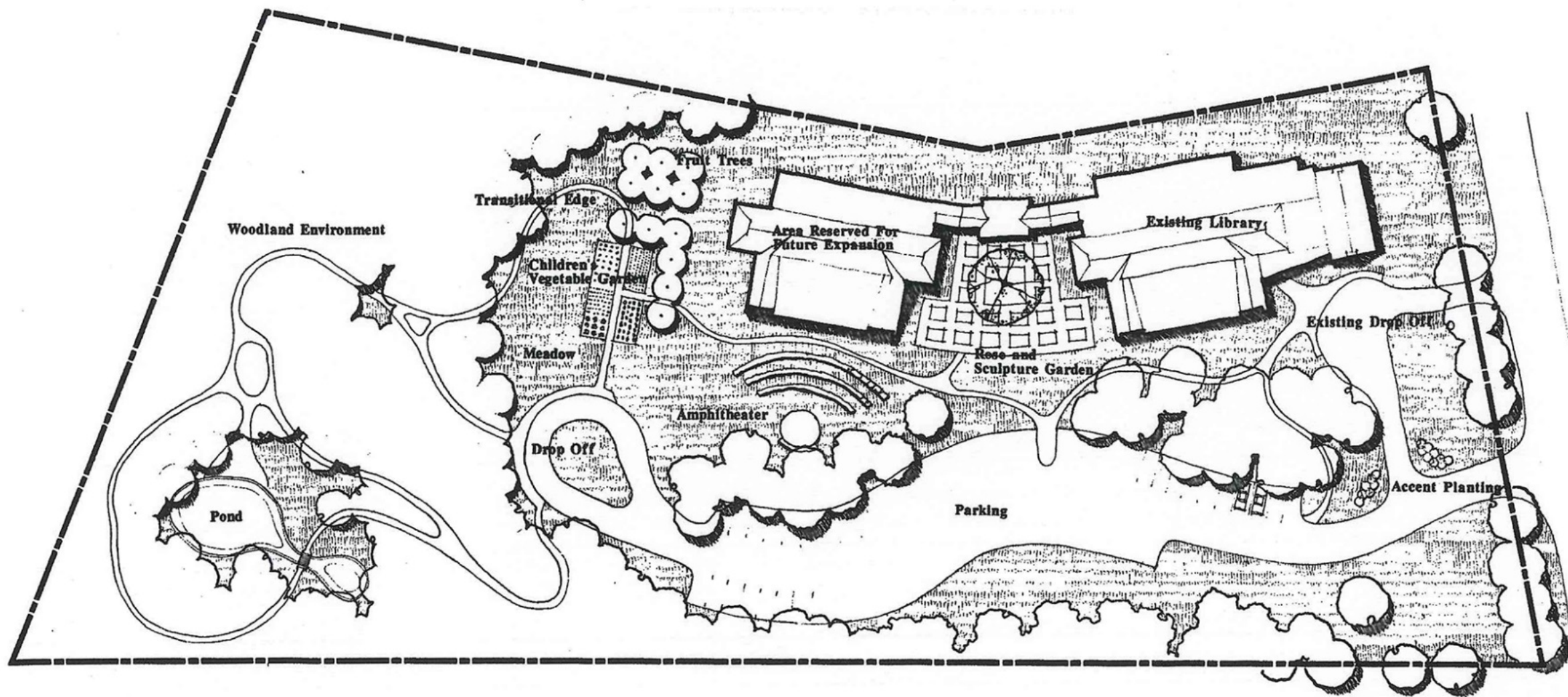
Lavatories:
M: 1 F: 1

Drinking Fountains:
1

REQUIRED SPACE FOR FIXTURES:

~220 SF





© 1990 Terrien Architects, Inc.

Concept Master Plan

PRINCE MEMORIAL LIBRARY CUMBERLAND, MAINE

JOB NO. 89025.10
DATE: MAY 1990
REVISIONS:
SCALE: 1" = 30'

DRAWING NO.

TERRIEN
ARCHITECTS

Terrien Architects, Inc.
130 Park Street
Portland, Maine 04101
207 774-0010 Fax: 774-0120