

# Historical Society & Library Improvement Project

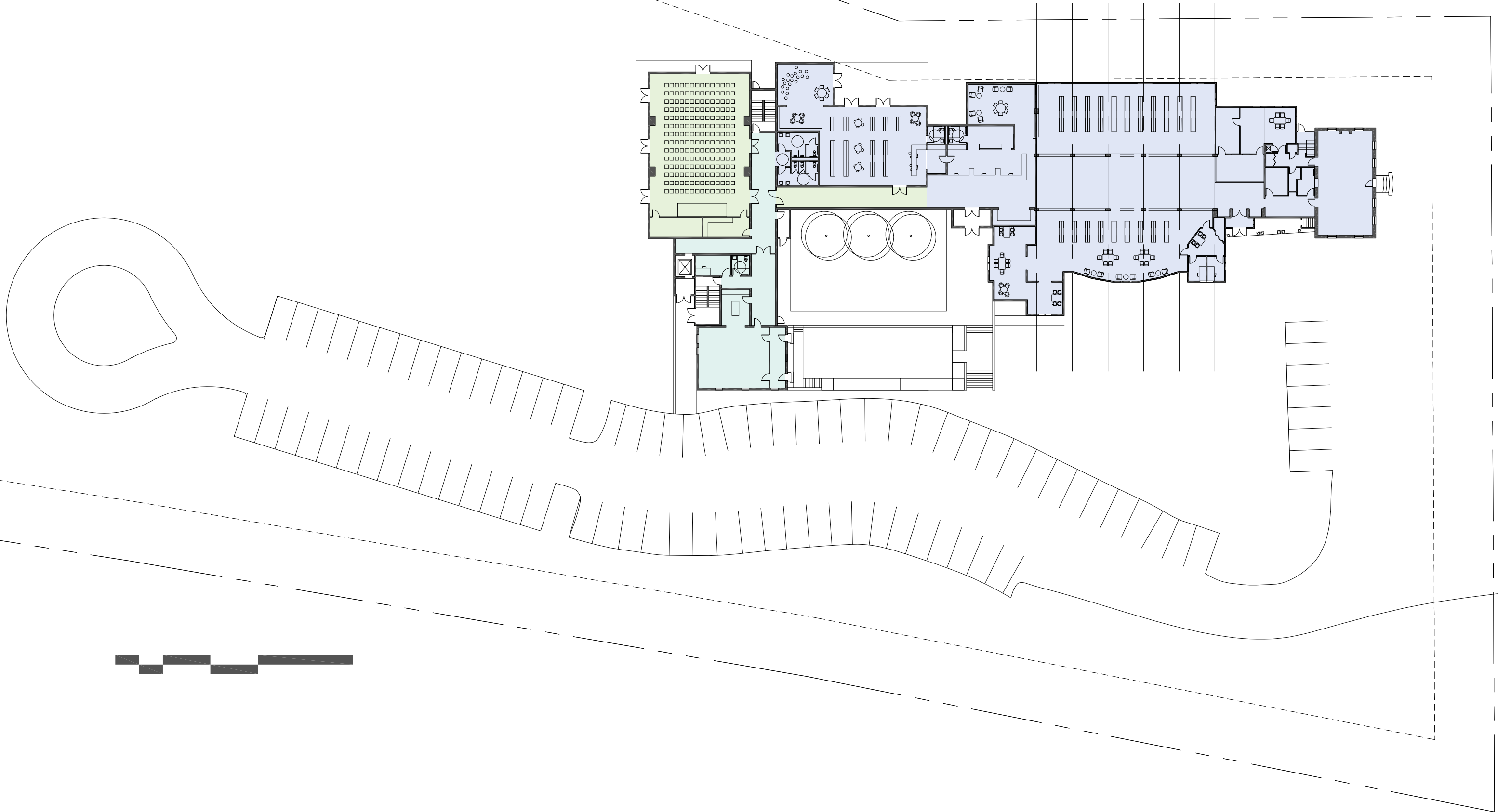


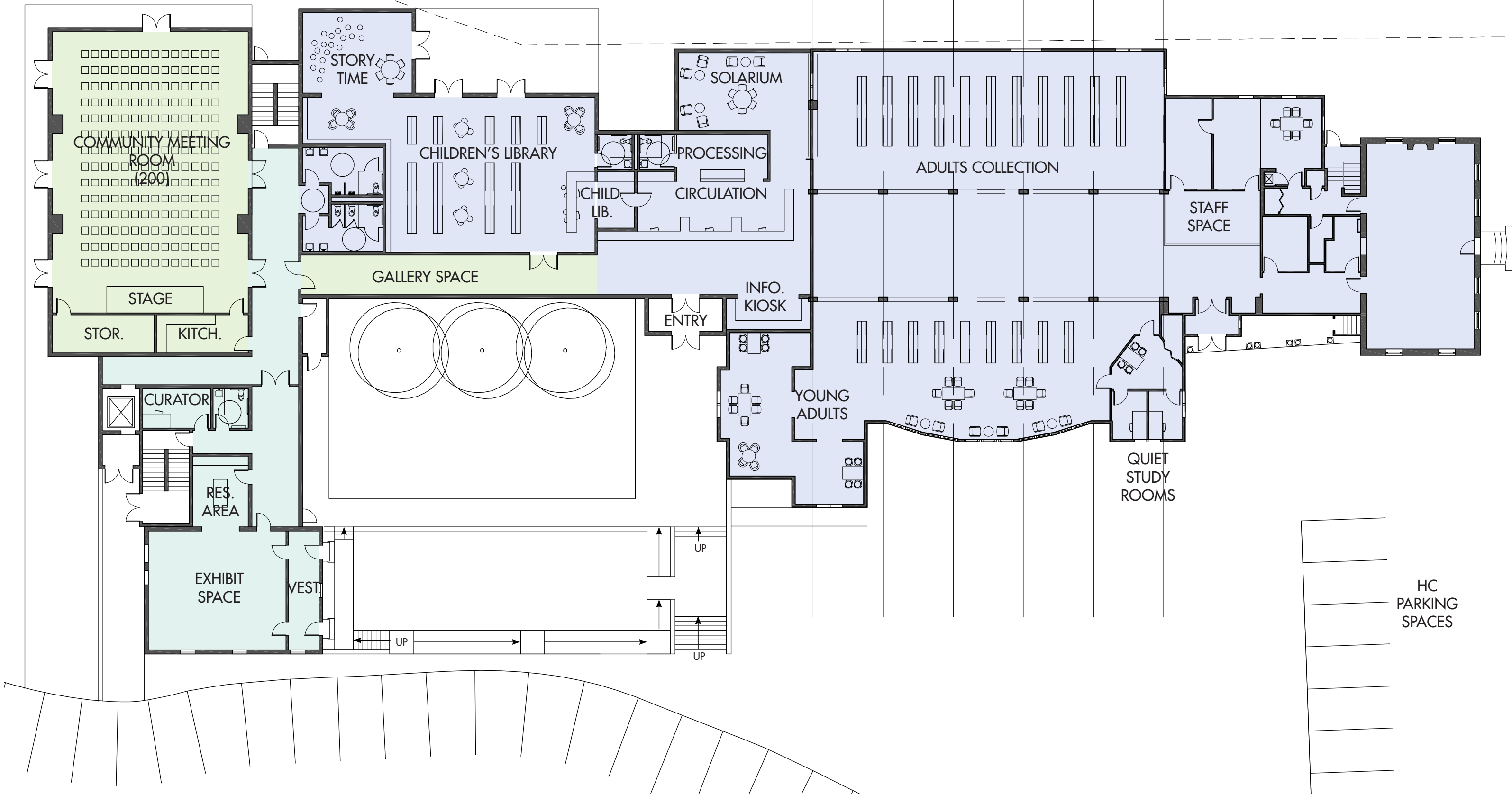
July 16, 2019

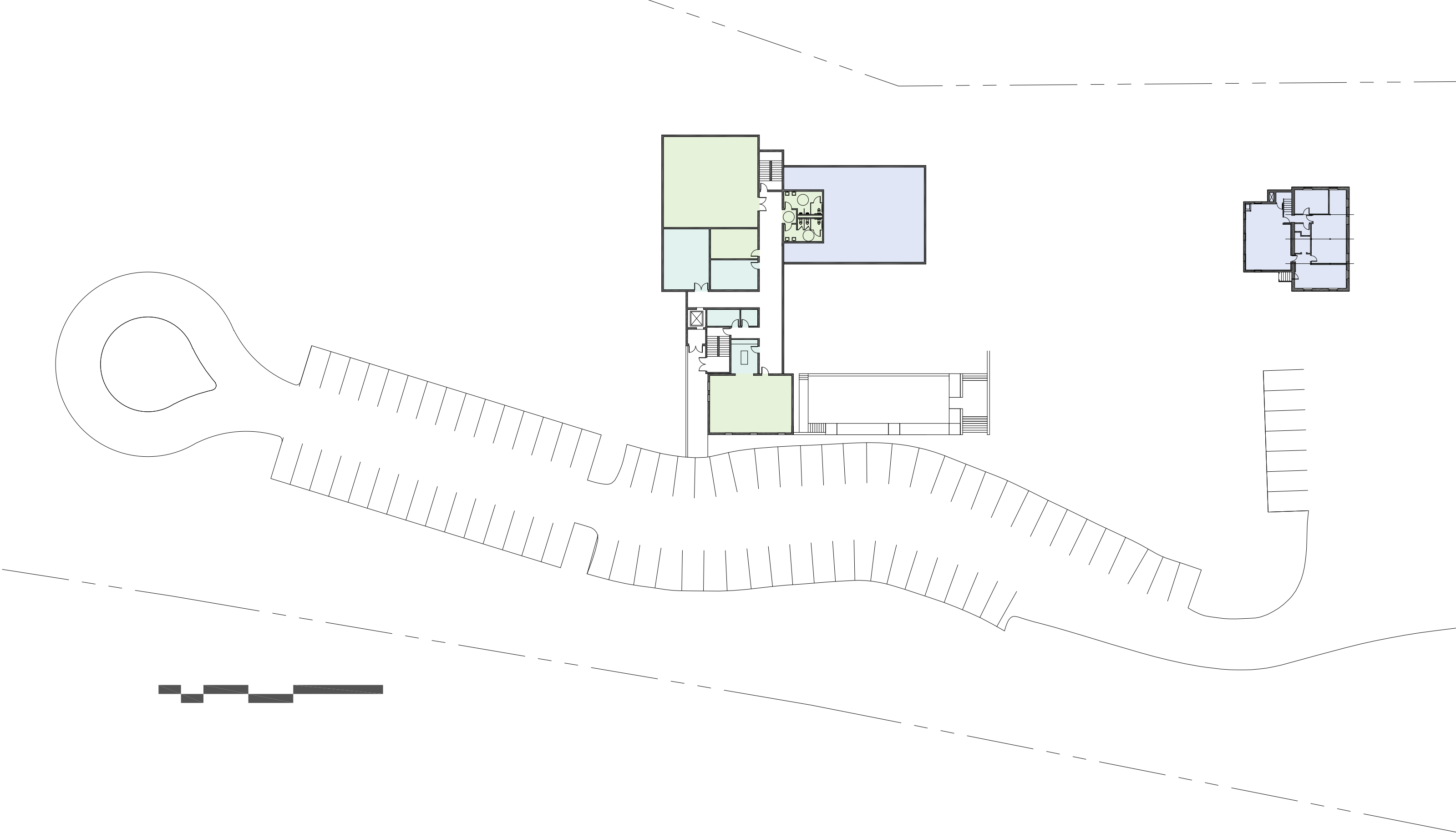
Historical Society & Library Improvement Project  
**Meeting #4 of 5**



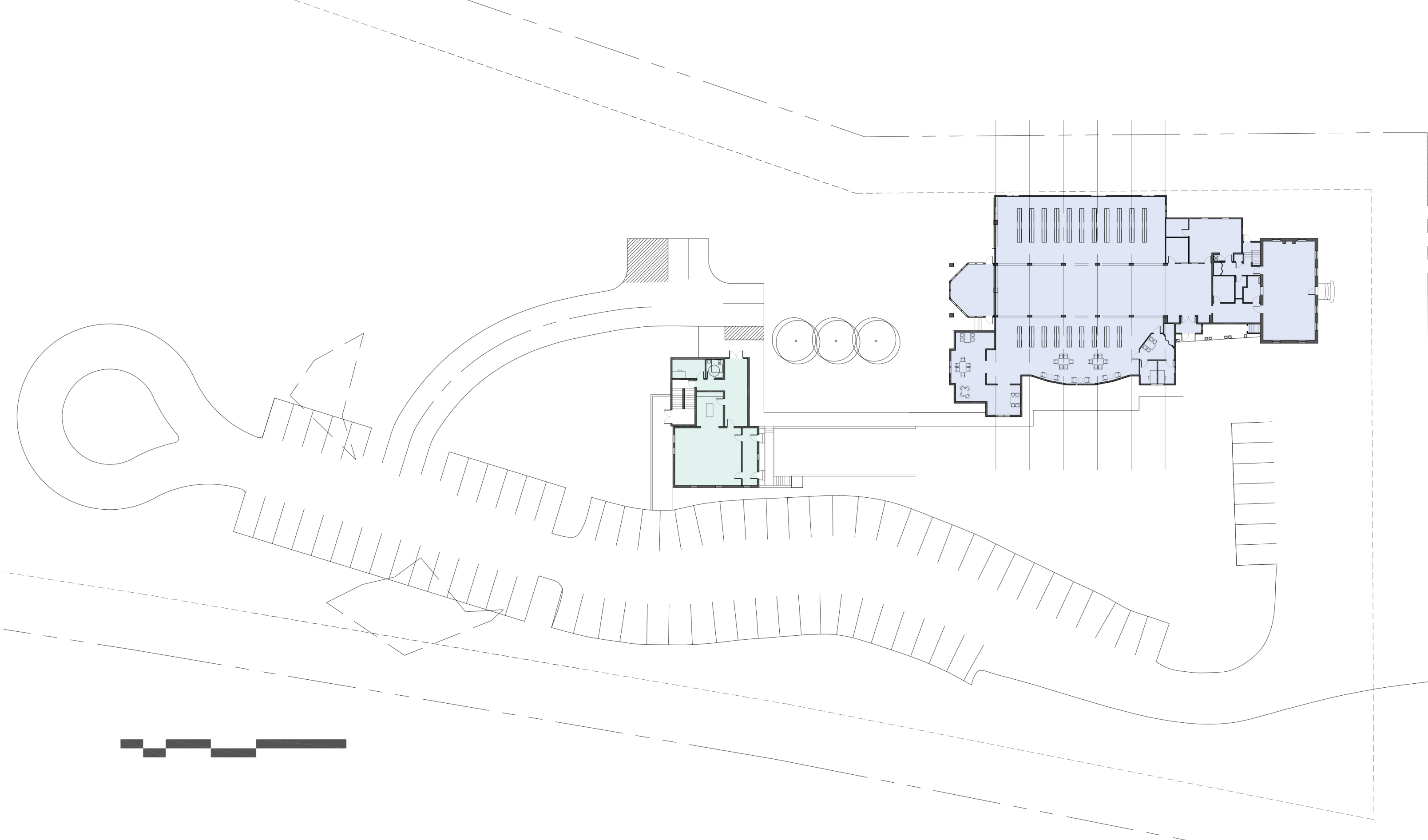




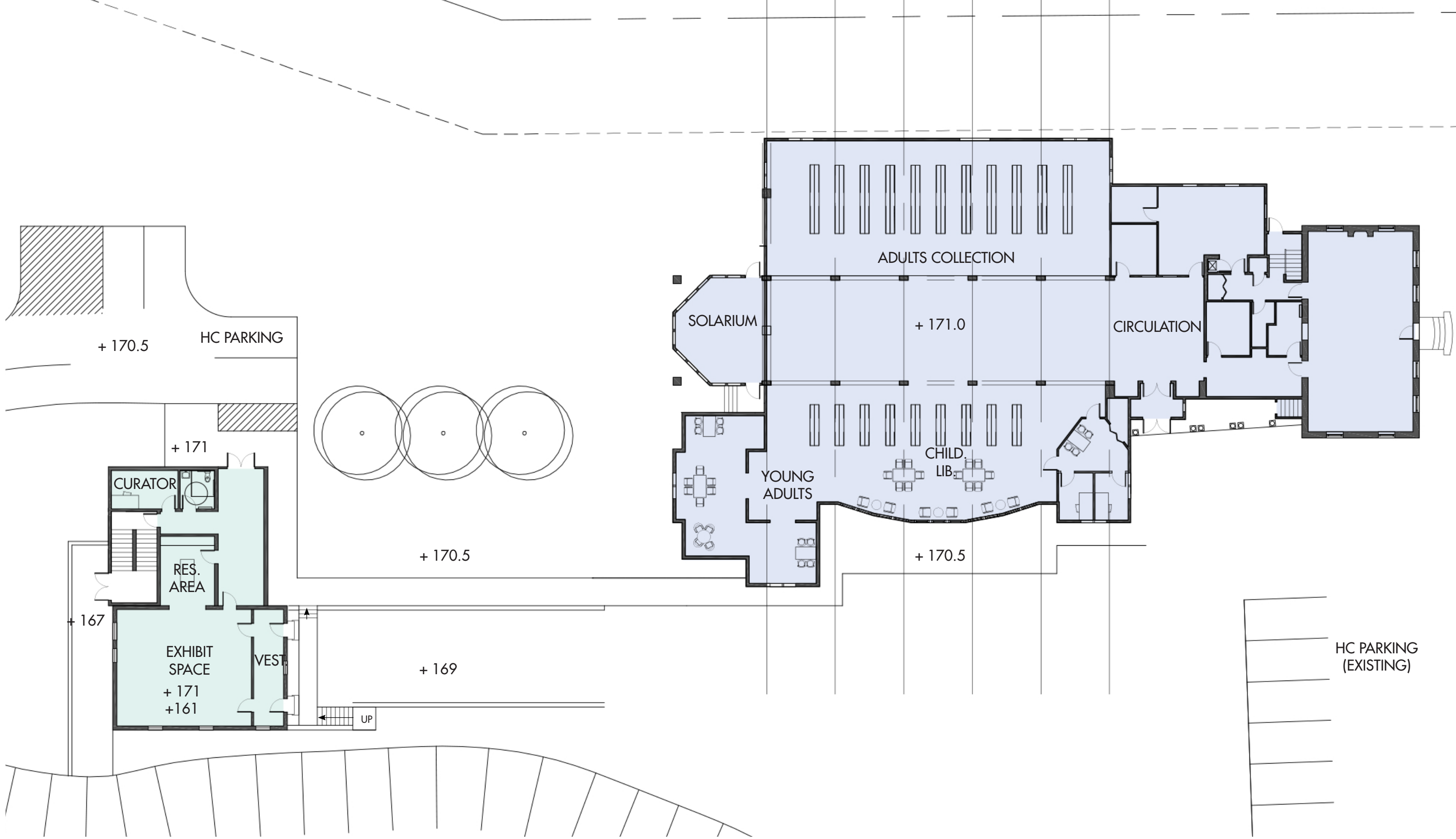




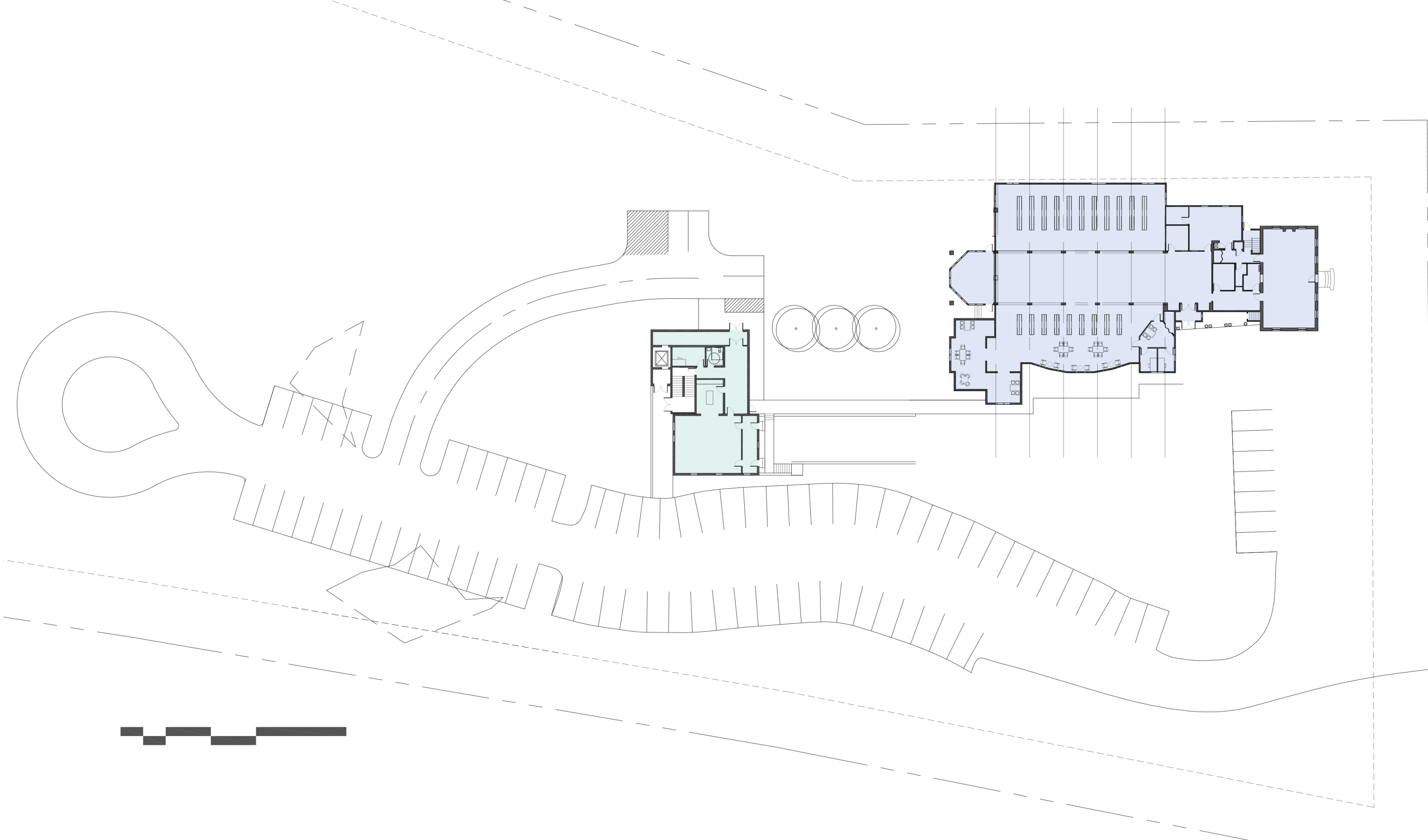


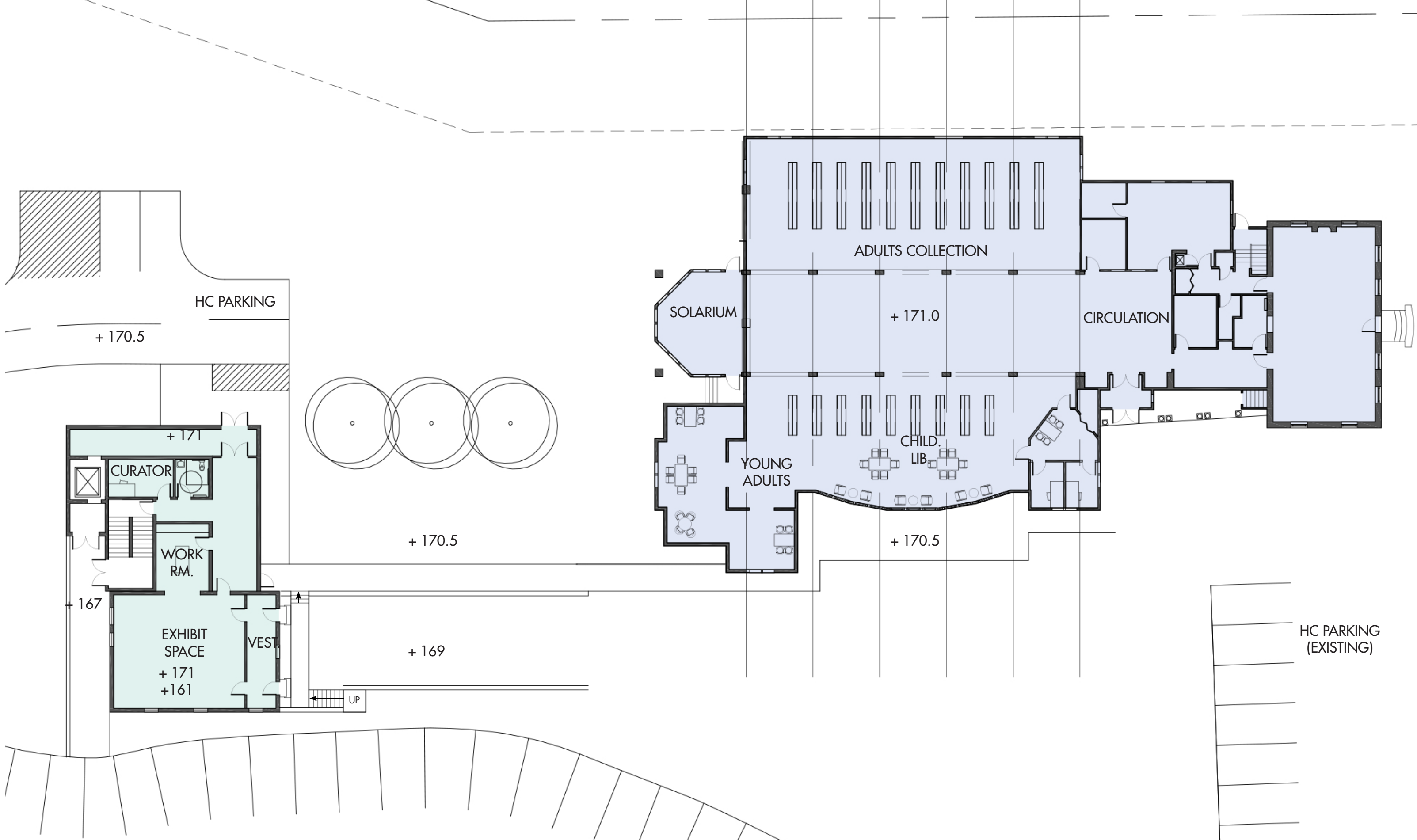


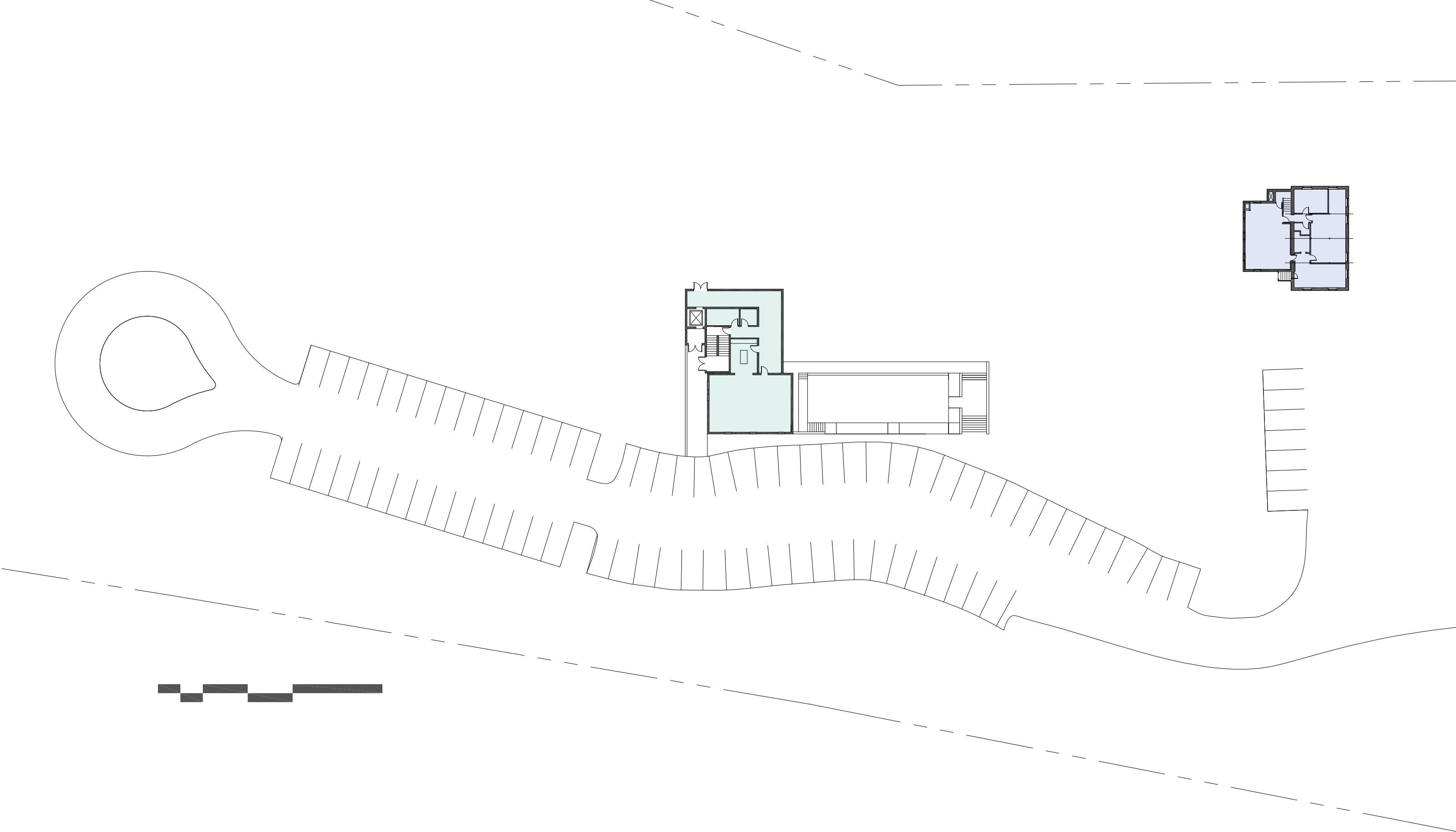


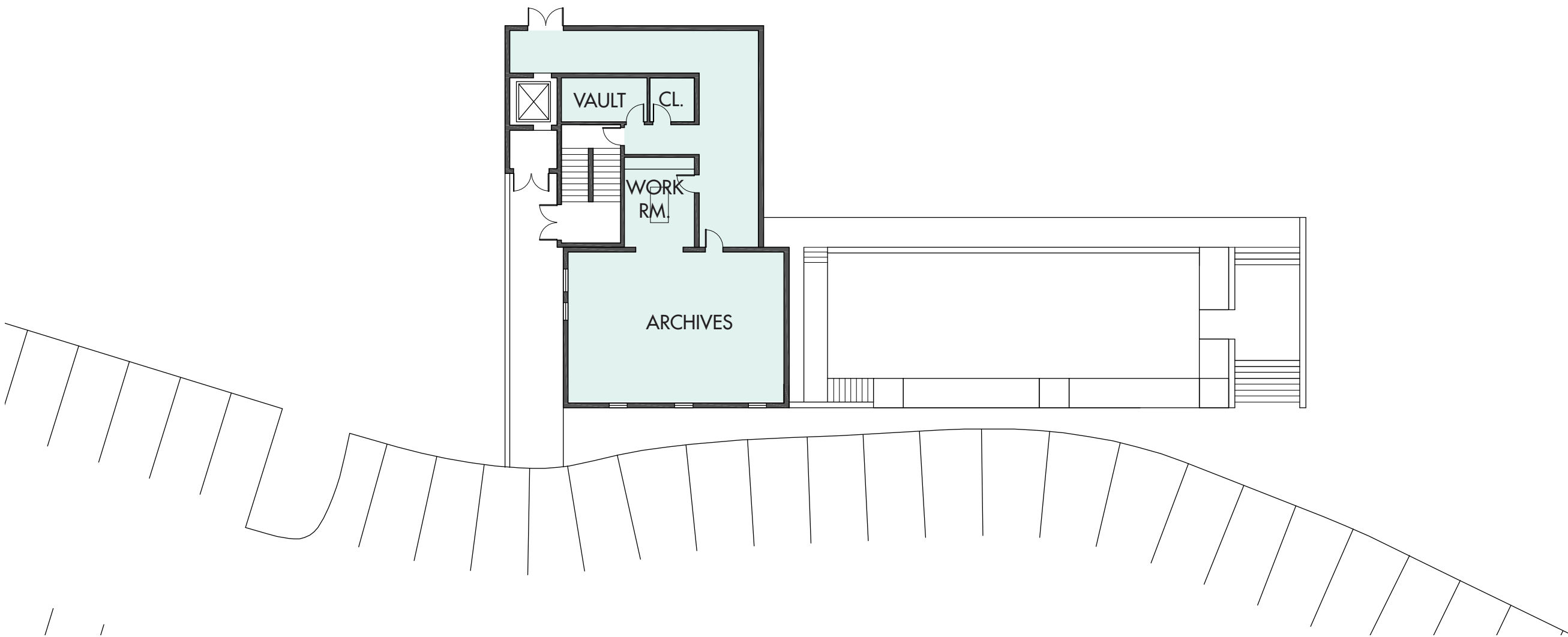














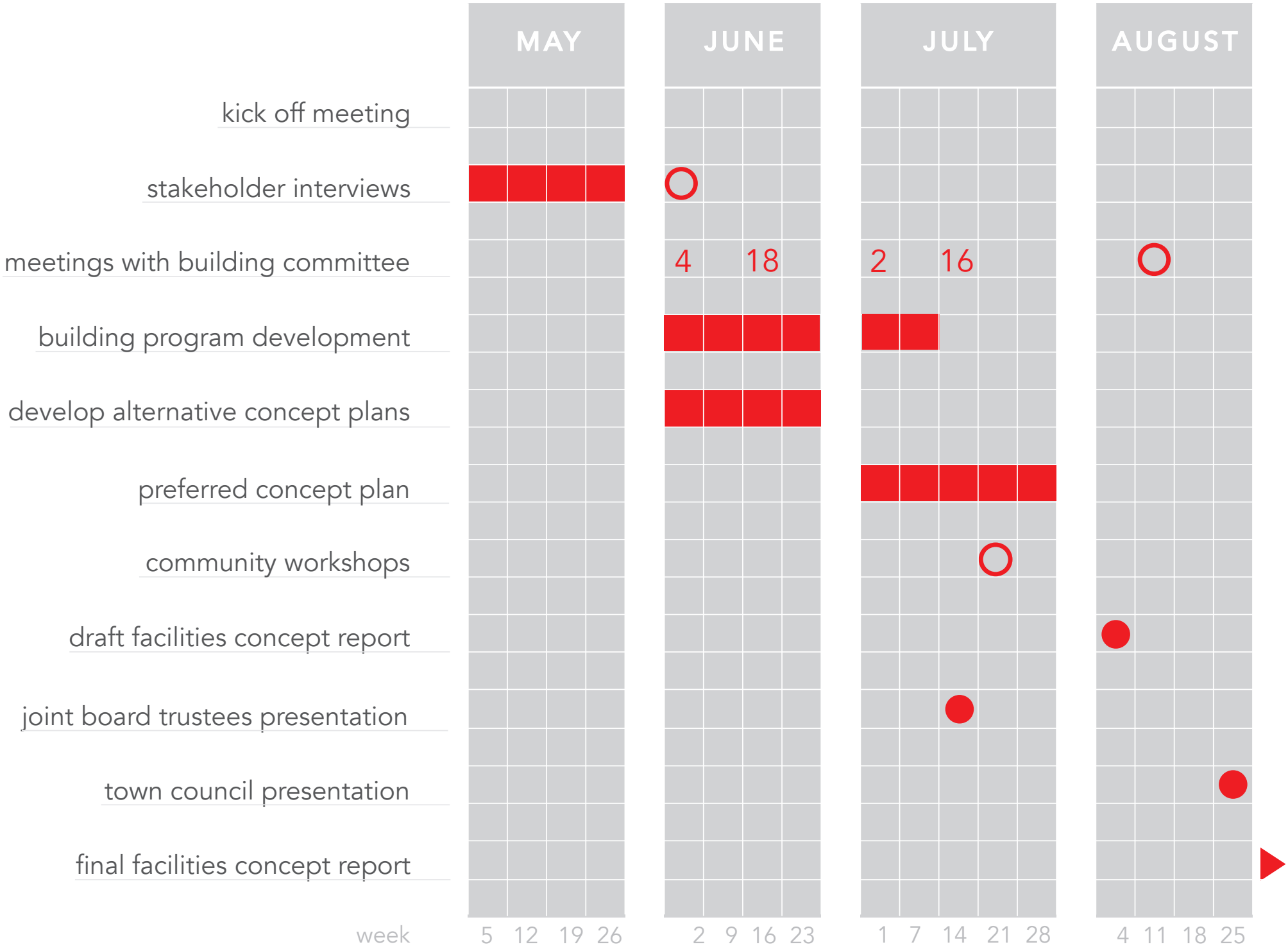








CHS & PML EXPANSION | PROPOSED SPACE PLANNING/ PROGRAM DEVELOPMENT SCHEDULE





# Historical Society & Library Improvement Project



July 16, 2019

Historical Society & Library Improvement Project  
**Meeting #4 of 5**







**scott simons architects**

*designed for human potential*

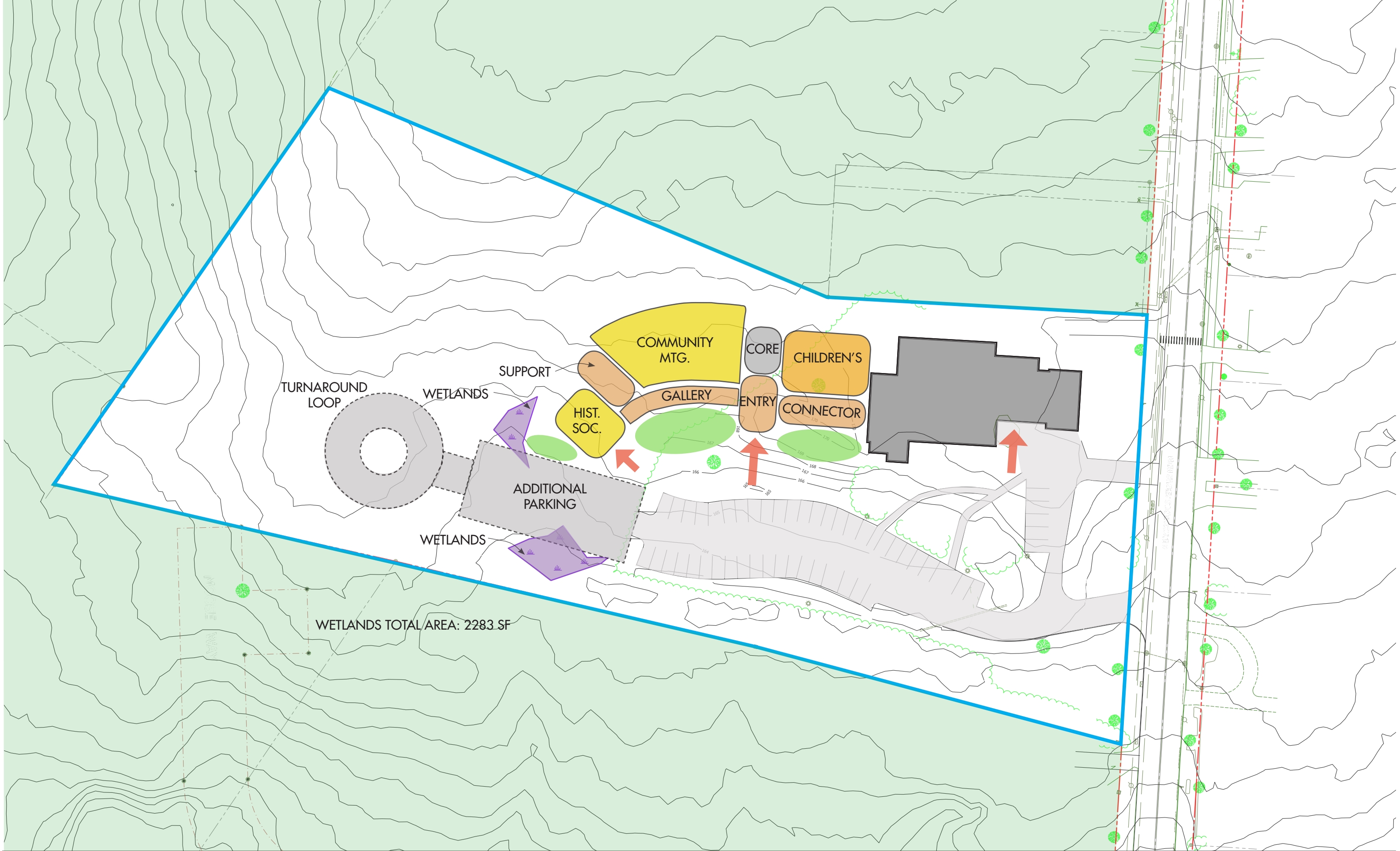
75 York Street, Portland, ME 04101  
207.772.4656 [www.SimonsArchitects.com](http://www.SimonsArchitects.com)

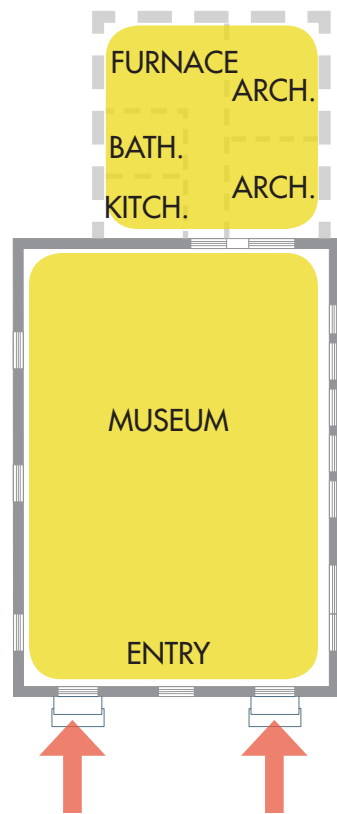
**Existing Site**

**Town of Cumberland**

Cumberland, Maine  
16 July 2019

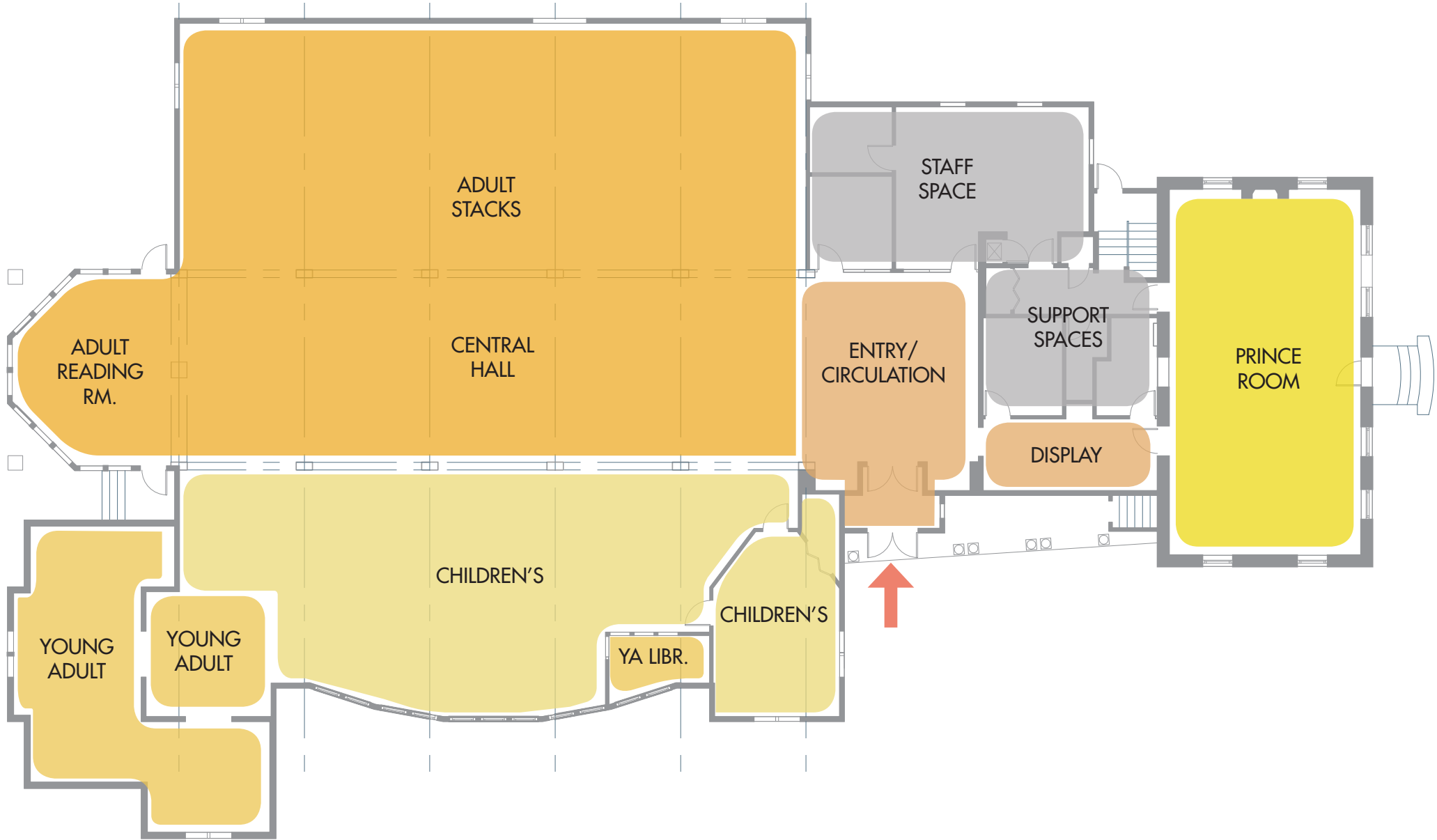






HISTORIC SOCIETY  
FLOOR PLAN

~1,050 sqft



PRINCE MEMORIAL LIBRARY  
FLOOR PLAN

~10,800 sqft

Program Space		Existing SF	Program Increase (SF)	Proposed SF	Floor Level	Notes
<b>Prince Memorial Library</b>						
<b>Entry / Vestibule</b>		45	-	45	1	Shared space, see below
<b>Circulation</b>		530	300	830	1	
<b>Staff Space</b>		618	-	618	1	
<b>Staff Bathroom</b>		-	50	50	1	ADA compliant, main level access
<b>Staff Break Room</b>		30	90	120	1	
<b>Restrooms</b>		230	-	230	1	serve both CHS and PML, see below
<b>Prince Room</b>		1,008	-	1,008	1	
<b>Adult Stacks</b>		2,285	1,620	3,905	1	Adult take over existing Children's Space
<b>Central Hall</b>		1,628	-	1,628	1	
<b>Adult Reading Room</b>		420	-	420	1	
<b>Children's Library</b>		1,620	-	1,620	1	Relocated into expansion space
<b>Children's Activity Area</b>		338	-	338	1	Relocated into expansion space
<b>Children's Craft Area</b>		(part of Children's)	180		1	
<b>Children's Librarian / Staff</b>		80	120	200	1	
<b>Young Adult</b>		890	110	1,000	1	
<b>Media A/V</b>		(integrated into Coll.)	-	-	1	
<b>Library Storage</b>		805	200	1,005	0, 1	
<b>Book Sale Storage</b>		560	-	560	0	Book sale space year-round
<b>Town Archive</b>		(incl. in Library Storage)	-	-	0	
<b>Mechanical</b>		160	-		0	Shared space, see below
	Subtotal:	11,247	2,670	13,577		

Program Space		Existing SF	Program Increase (SF)	Proposed SF	Floor Level	Notes
<b>Cumberland Historical Society</b>						
<b>1853 School Shell / Main Room</b>		580	-	580	1	Permanent collection, some rotating collection
<b>Kitchen</b>		30	90	120	1	Increased 30%
<b>Textile Archive</b>		70	110	180	0	Deep archival boxes on tall shelves, Hanging space, climate controlled, increased 30%
<b>Toilet</b>		30	20	50	0	ADA accessible
<b>Mechanical</b>		48	302	350	0	Shared mechanical space, increased 30%
<b>Curator's Office</b>		56	94	140	0	Includes cloak closet, desk, chairs & work space, increased 30%
<b>Accession Room</b>		(integrated into Main)	160	160	0	Needs computer station, shelving, table for layout, 8 X 14, increased 30%
<b>Research Area</b>		88	42	130	0	Computer, work space, increased 30%
<b>Archival Storage</b>		60	520	580	0	Climate controlled
<b>Vestibule</b>		160	-	160	1	Maintain 2 separate historical entries, but also ADA entry
<b>Gallery</b>		-	432	432	1	
	Subtotal:	1,122	1,770	2,882		

Program Space		Existing SF	Program Increase (SF)	Proposed SF	Floor Level	Notes
Shared Spaces						
New Entry / Vestibule		-	200	200	1	
12 Person Meeting Room		-	300	300	1	
120 person Meeting Room		-	1,550	1,550	1	Bifold partitions to divide space, larger size for 200- (2,250 sf)
Restrooms		-	220	220	1	
Chair / Table Storage		-	150	150	1	
Warming Kitchen		-	80	80	1	
Quiet Meeting Rooms		-	240	240	1	
	Subtotal:	0	2,740	2,740		
	Subtotal:	12,369	7,180	19,199		
Net to Gross		1,807		3,794		approximately 20%
TOTAL GSF		14,176		22,763		



