

Cumberland Historical Society & Prince Memorial Library Expansion Project

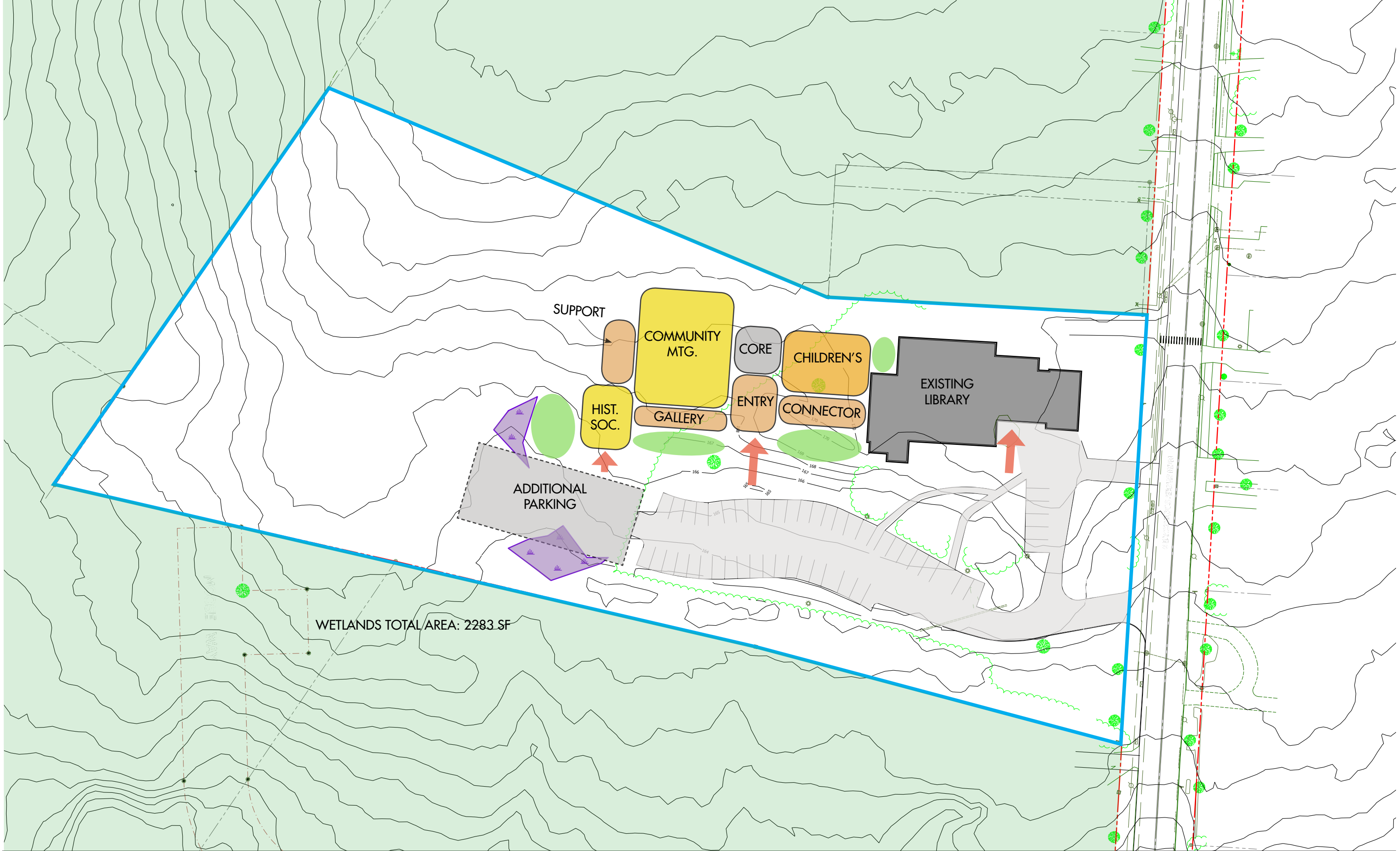


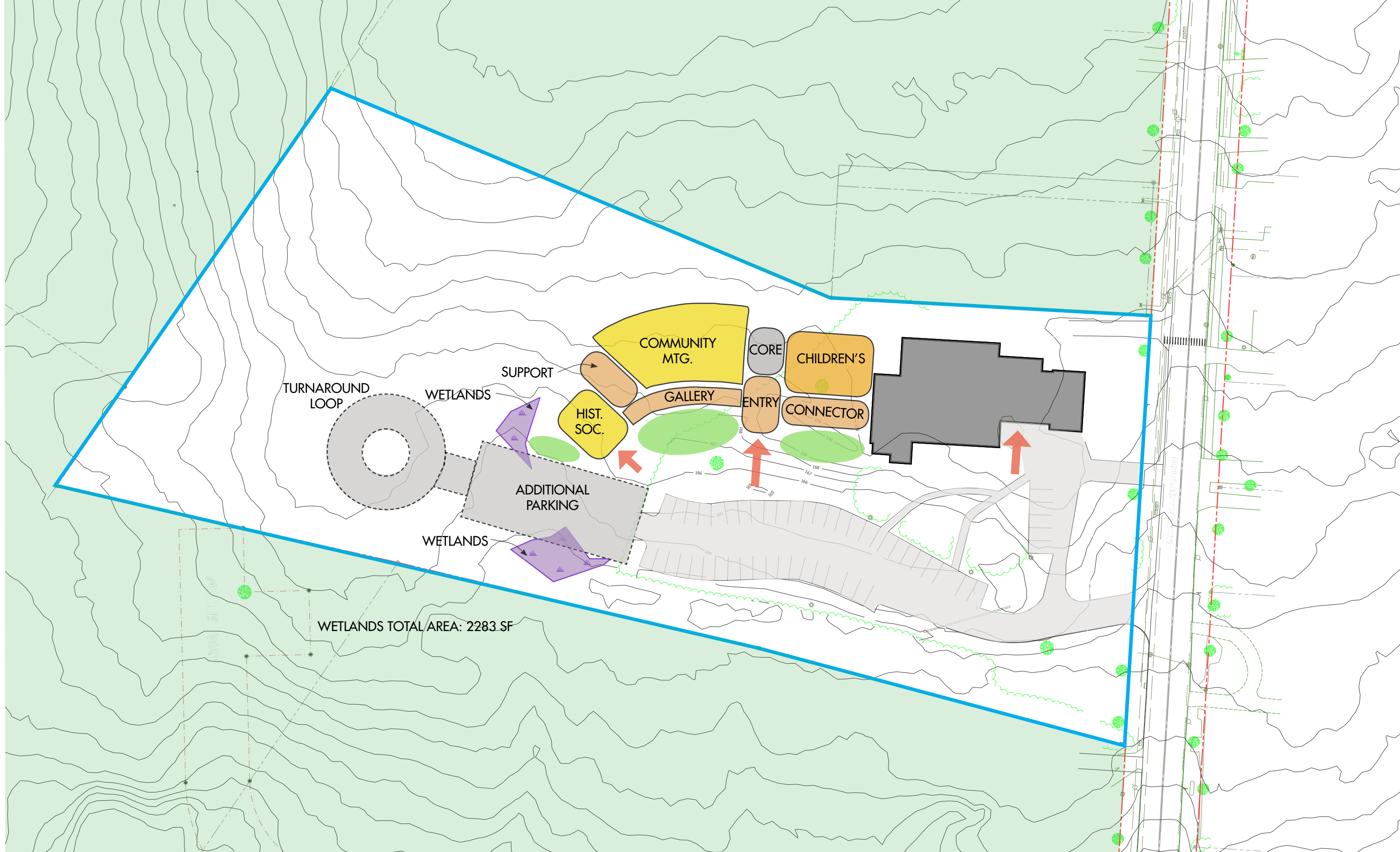
August 26, 2019
Town Council Presentation

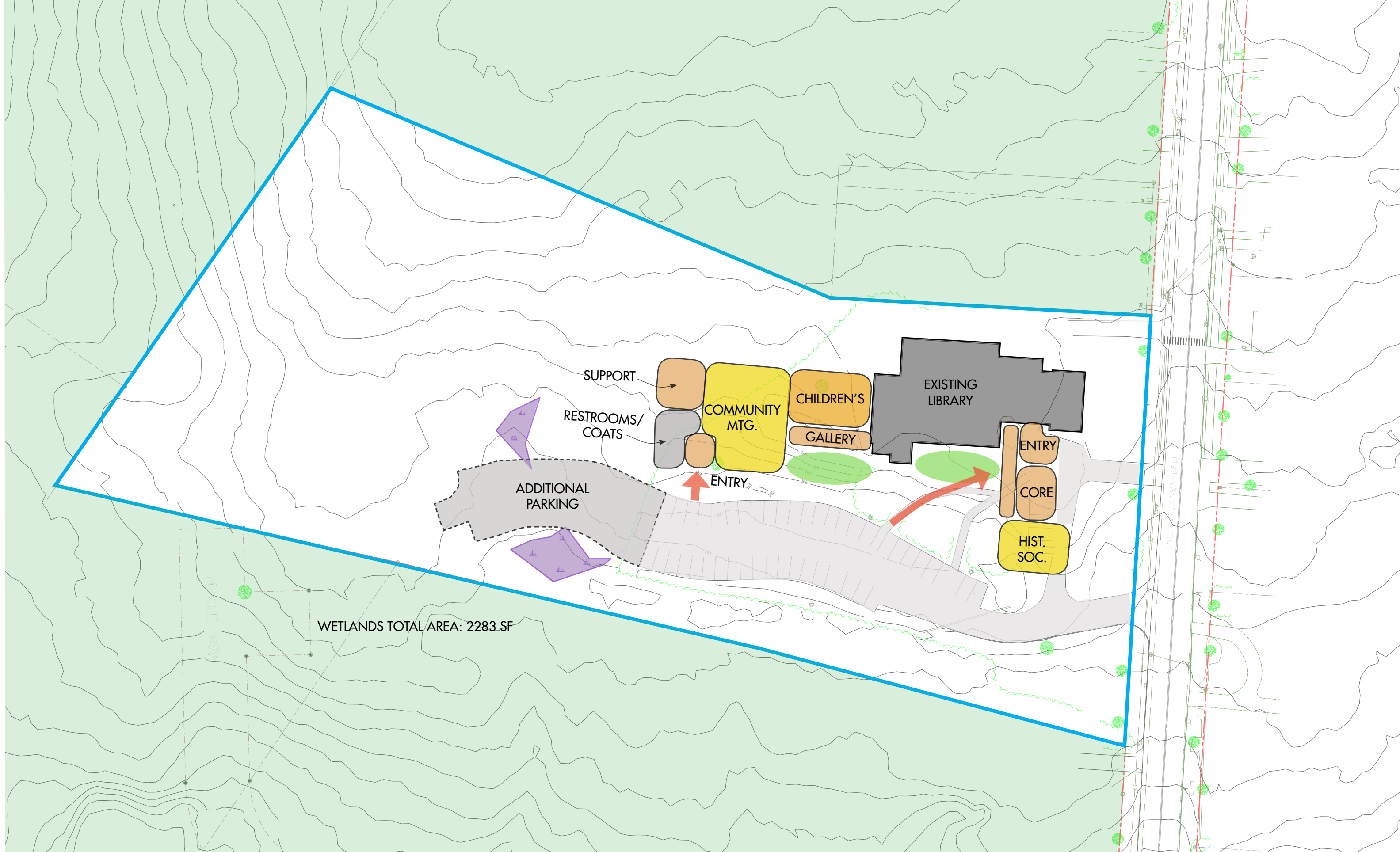


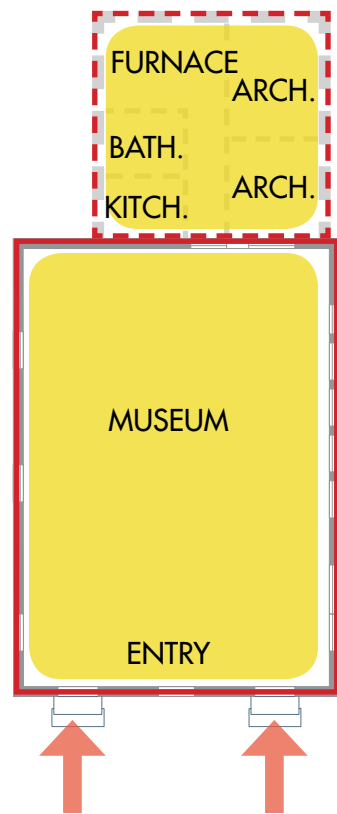






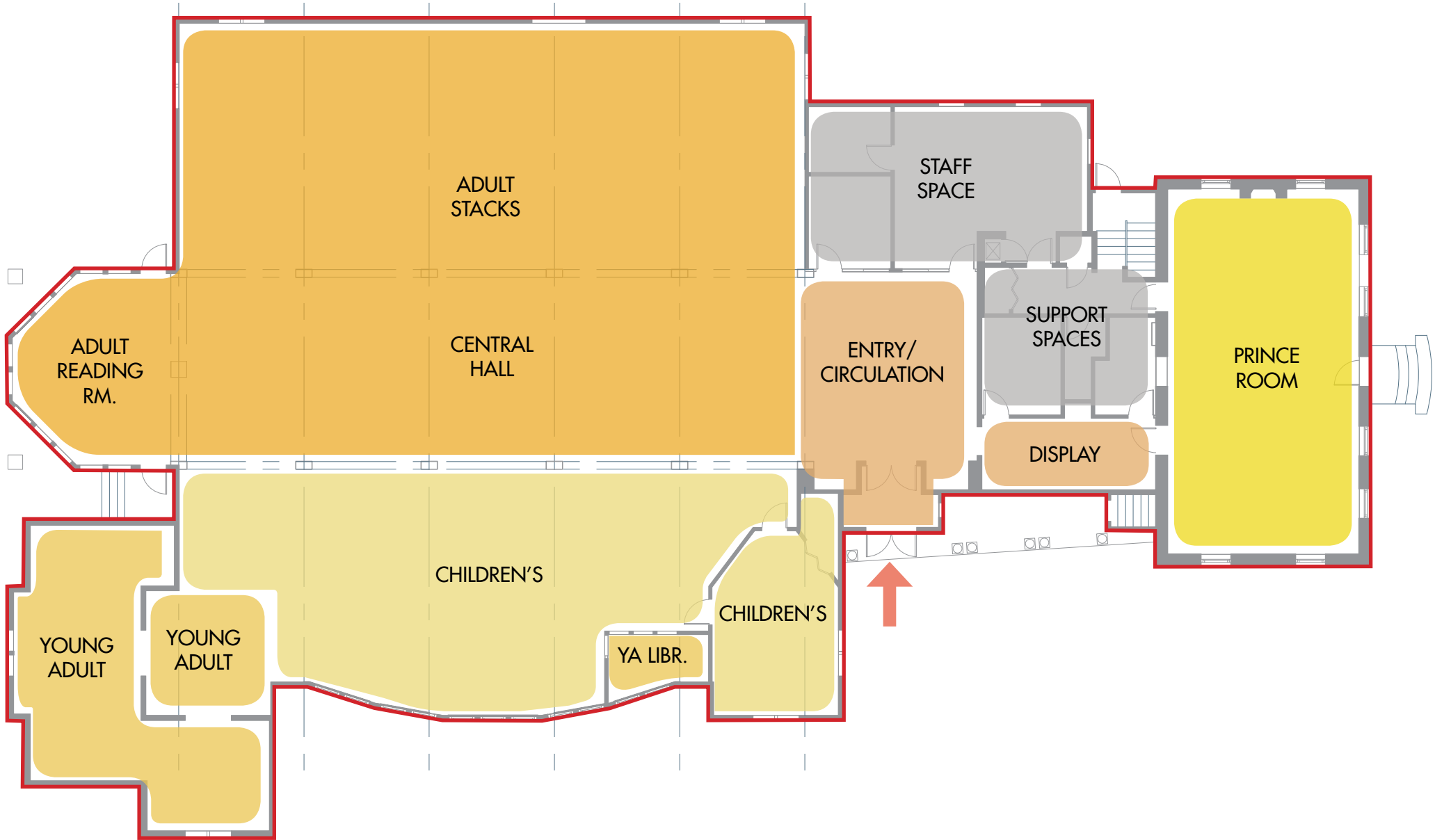






HISTORIC SOCIETY
FLOOR PLAN

~1,050 sqft



PRINCE MEMORIAL LIBRARY
FLOOR PLAN

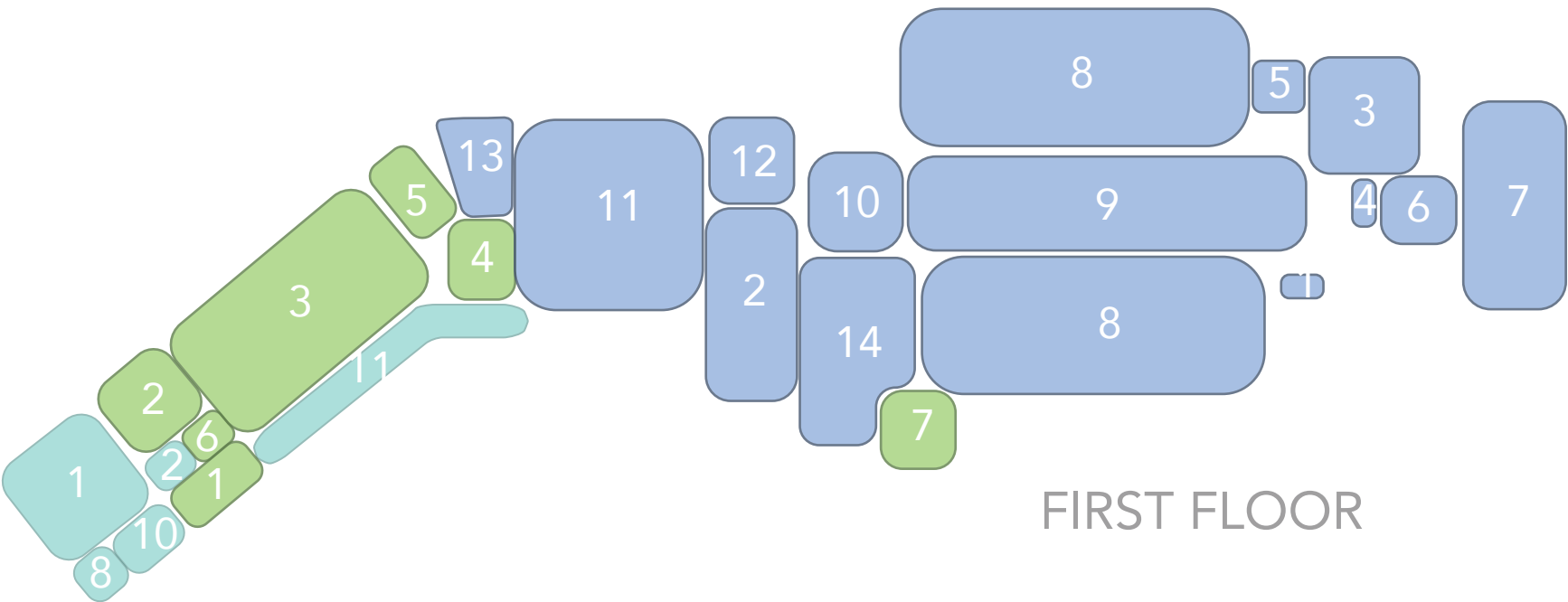
~10,800 sqft

Program Space	Existing SF	Program Increase (SF)	Proposed SF	Floor Level	Notes
Prince Memorial Library					
Entry / Vestibule	45	-	45	1	Shared space, see below
Circulation	530	300	830	1	
Staff Space	618	-	618	1	
Staff Bathroom	-	50	50	1	ADA compliant, main level access
Staff Break Room	30	90	120	1	
Restrooms	230	-	230	1	serve both CHS and PML, see below
Prince Room	1,008	-	1,008	1	
Adult Stacks	2,285	1,620	3,905	1	Adult take over existing Children's Space
Central Hall	1,628	-	1,628	1	
Adult Reading Room	420	-	420	1	
Children's Library	1,620	-	1,620	1	Relocated into expansion space
Children's Activity Area	338	-	338	1	Relocated into expansion space
Children's Craft Area	(part of Children's)	180		1	
Children's Librarian / Staff	80	120	200	1	
Young Adult	890	110	1,000	1	
Media A/V	(integrated into Coll.)	-	-	1	
Library Storage	805	200	1,005	0, 1	
Book Sale Storage	560	-	560	0	Book sale space year-round
Town Archive	(incl. in Library Storage)	-	-	0	
Mechanical	160	-		0	Shared space, see below
Subtotal:	11,247	2,670	13,577		

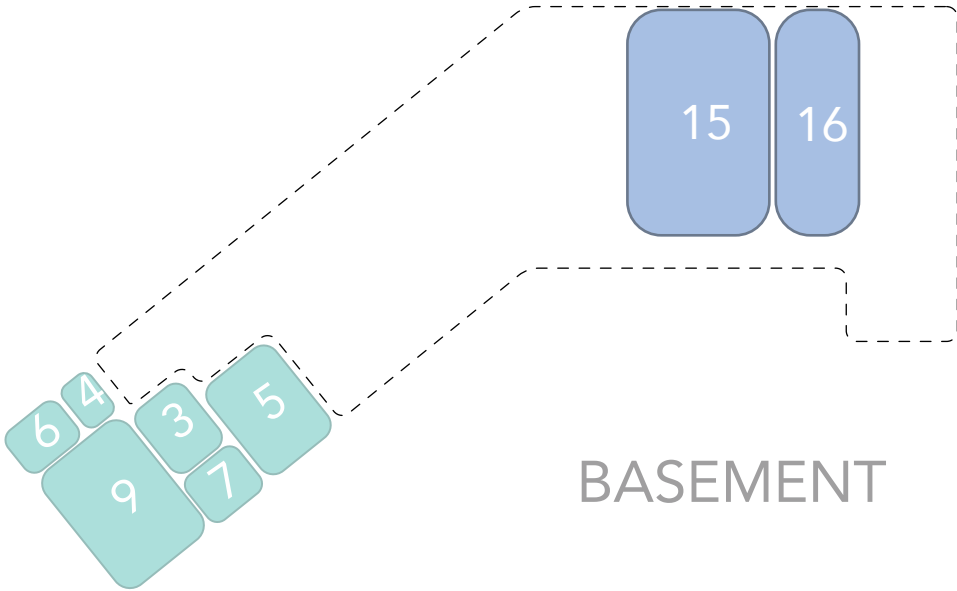
Program Space	Existing SF	Program Increase (SF)	Proposed SF	Floor Level	Notes
Cumberland Historical Society					
1853 School Shell / Main Room	580	-	580	1	Permanent collection, some rotating collection
Kitchen	30	90	120	1	Increased 30%
Textile Archive	70	110	180	0	Deep archival boxes on tall shelves, Hanging space, climate controlled. increased 30%
Toilet	30	20	50	0	ADA accessible
Mechanical	48	302	350	0	Shared mechanical space, increased 30%
Curator's Office	56	94	140	0	Includes cloak closet, desk, chairs & work space, increased 30%
Accession Room	(integrated into Main)	160	160	0	Needs computer station, shelving, table for layour, 8 X 14, increased 30%
Research Area	88	42	130	0	Computer, work space, increased 30%
Archival Storage	60	520	580	0	Climate controlled
Vestibule	160	-	160	1	Maintain 2 separate historical entries, but also ADA entry
Gallery	-	432	432	1	
Subtotal:	1,122	1,770	2,882		

Program Space	Existing SF	Program Increase (SF)	Proposed SF	Floor Level	Notes
Shared Spaces					
New Entry / Vestibule	-	200	200	1	
12 Person Meeting Room	-	300	300	1	
120 person Meeting Room	-	1,550	1,550	1	Bifold partitions to divide space, larger size for 200- (2,250 sf)
Restrooms	-	220	220	1	
Chair / Table Storage	-	150	150	1	
Warming Kitchen	-	80	80	1	
Quiet Meeting Rooms	-	240	240	1	
Subtotal:	0	2,740	2,740		
Subtotal:	12,369	7,180	19,199		

Net to Gross	1,807		3,794		approximately 20%
TOTAL GSF	14,176		22,763		



FIRST FLOOR



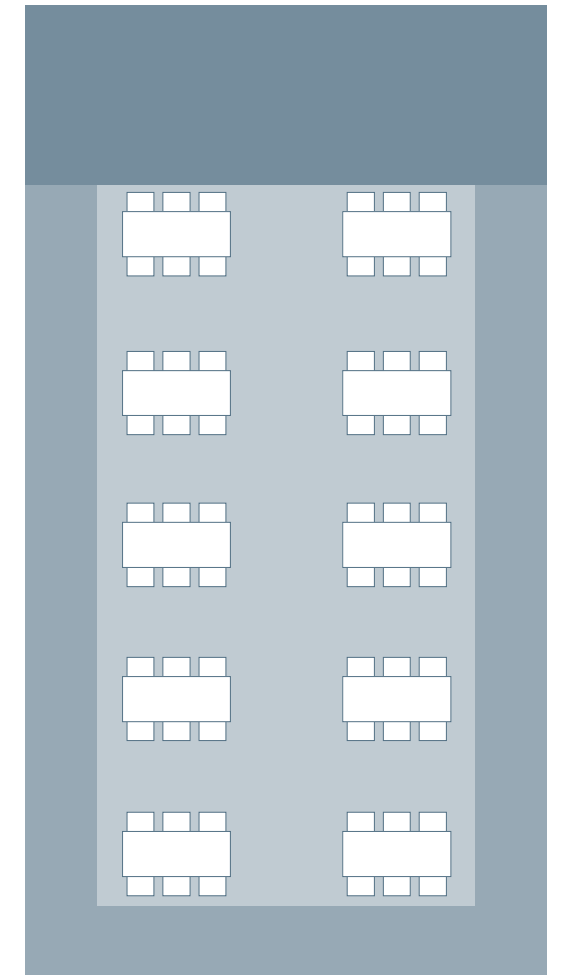
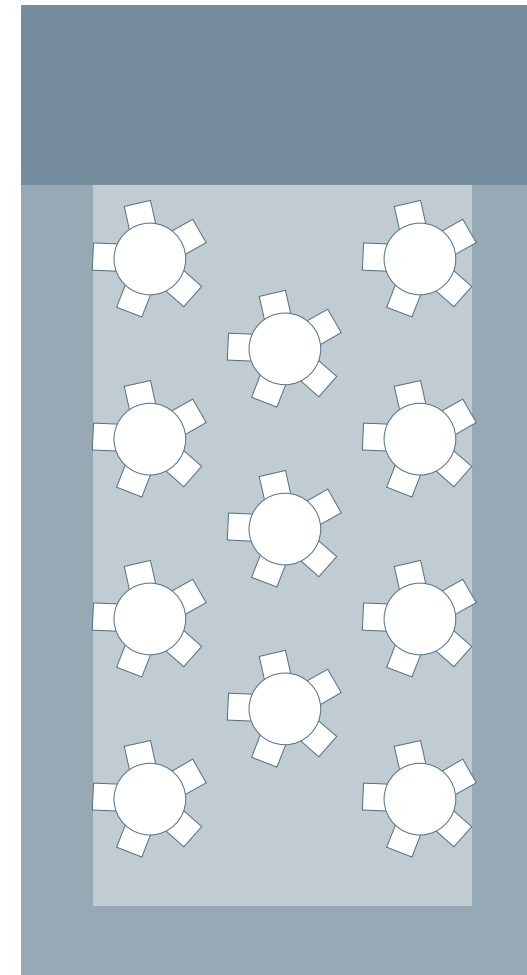
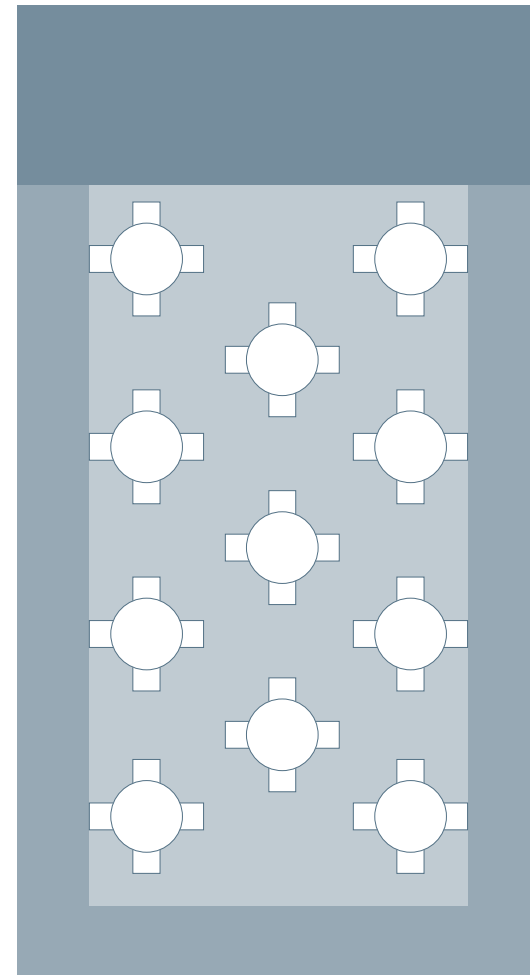
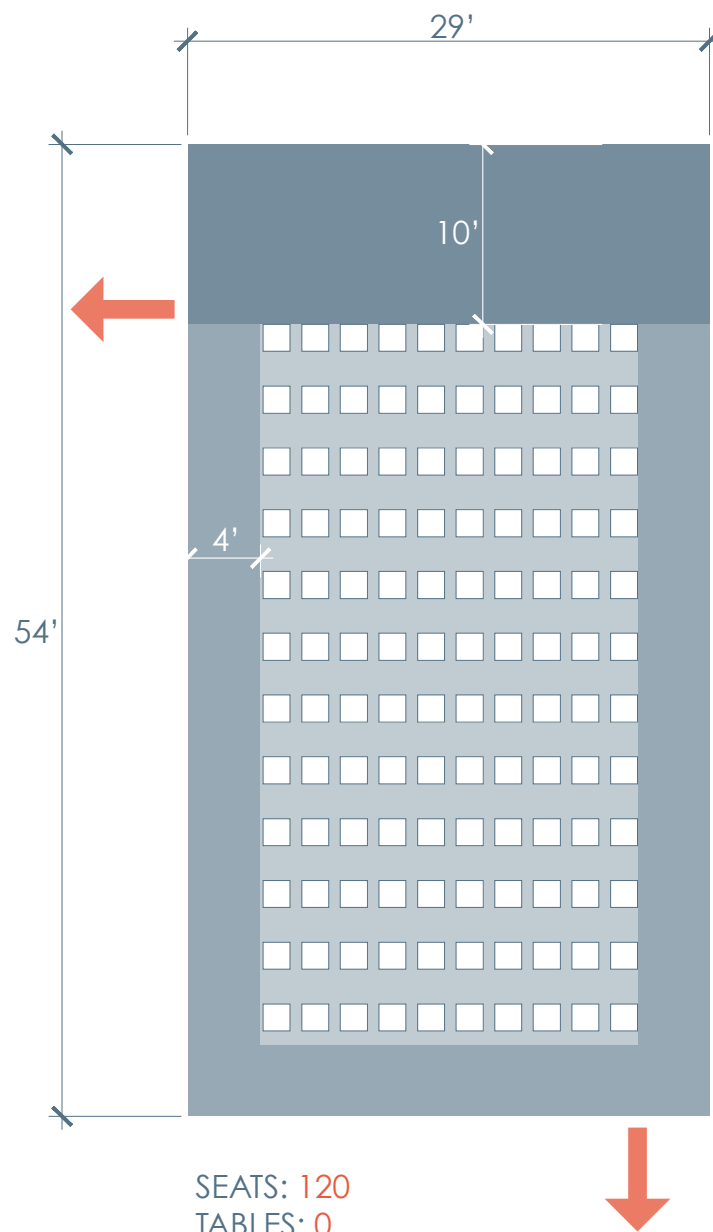
BASEMENT

- 1 ENTRY / VESTIBULE
- 2 CIRCULATION
- 3 STAFF SPACE
- 4 STAFF BATHROOM
- 5 STAFF BREAKROOM
- 6 RESTROOMS
- 7 PRINCE ROOM
- 8 ADULT STACKS

- 9 CENTRAL HALL
- 10 ADULT READING ROOM
- 11 CHILDREN'S LIBRARY
- 12 CHILDREN'S STORY AREA
- 13 CHILDREN'S LIBRARIAN / STAFF
- 14 YOUNG ADULT
- 15 LIBRARY STORAGE
- 16 BOOK SALE STORAGE

- 1 1853 SCHOOL SHELL / MAIN ROOM
- 2 KITCHEN
- 3 TEXTILE ARCHIVE
- 4 TOILET
- 5 MECHANICAL
- 6 CURATOR'S OFFICE
- 7 ACCESSION ROOM
- 8 RESEARCH AREA
- 9 ARCHIVAL STORAGE
- 10 VESTIBULE
- 11 GALLERY

- 1 NEW ENTRY / VESTIBULE
- 2 12 PERSON MEETING ROOM
- 3 120 PERSON MEETING ROOM
- 4 RESTROOMS
- 5 CHAIR / TABLE STORAGE
- 6 WARMING KITCHEN
- 7 QUIET MEETING ROOMS



AREA: 29' X 54' = 1,566 SF

OCCUPANCY: 1,566 SF / 7 SF = 223.7

REQUIRED PLUMBING FIXTURES:

Water Closet:
M: 1 F: 3

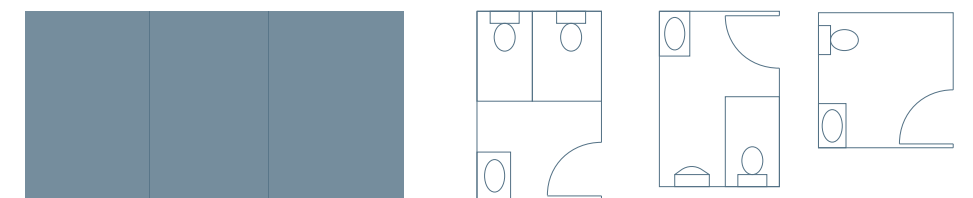
Lavatories:
M: 1 F: 1

Urinals:
M: 1

Drinking Fountains:
1

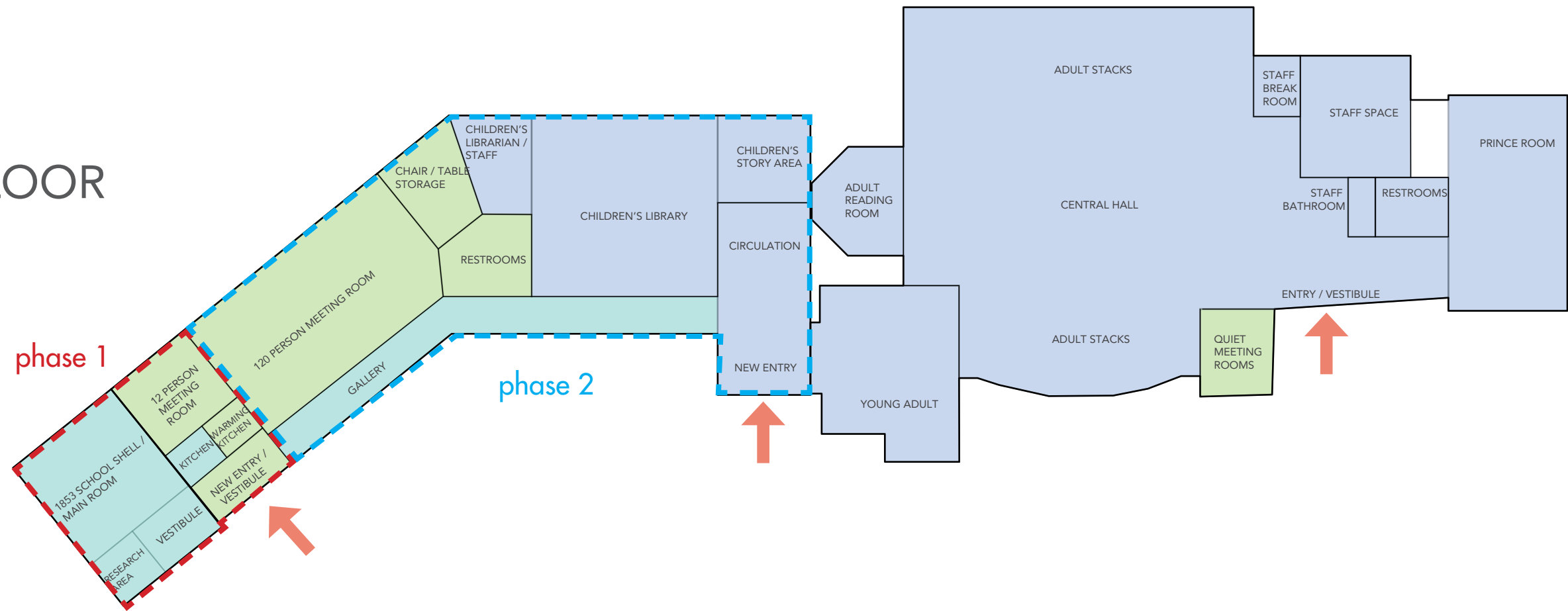
REQUIRED SPACE FOR FIXTURES:

~220 SF

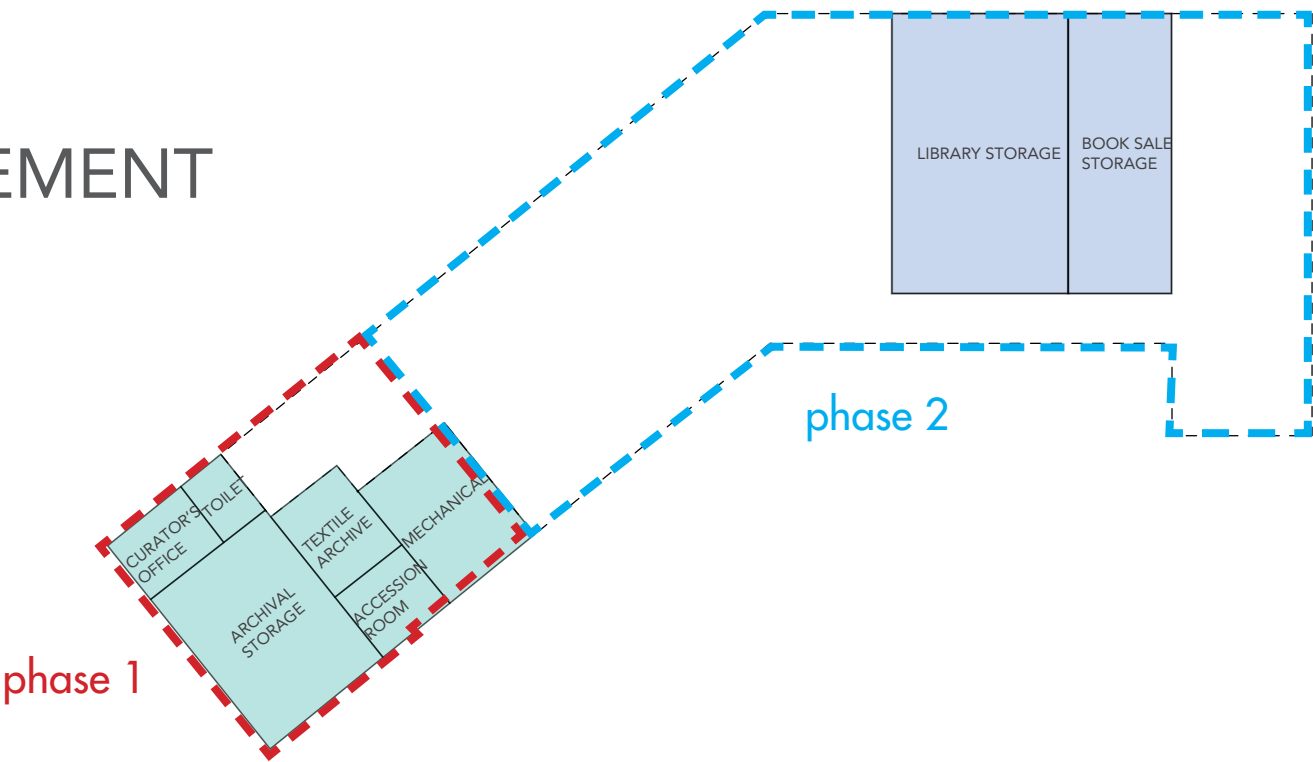




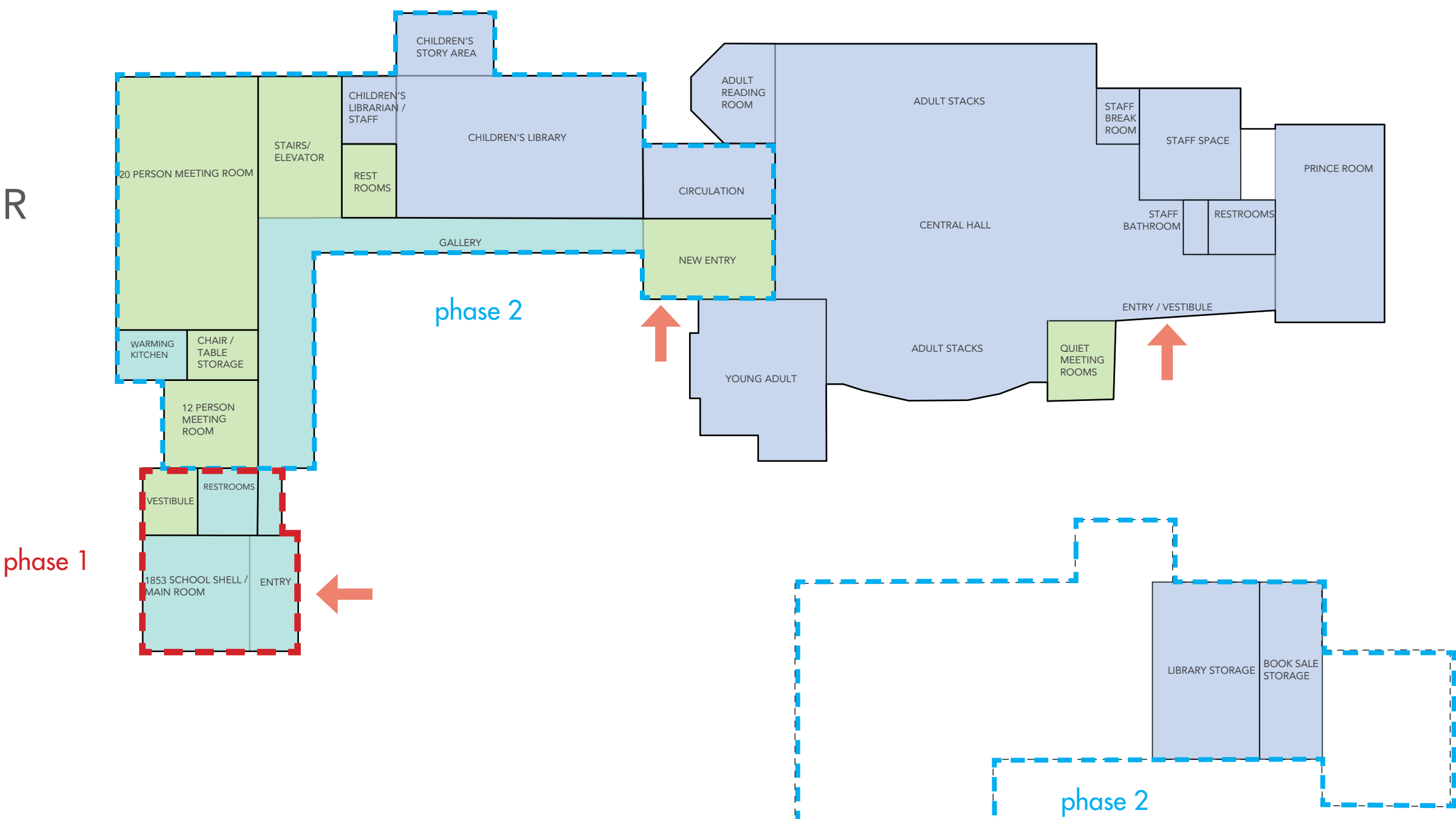
FIRST FLOOR



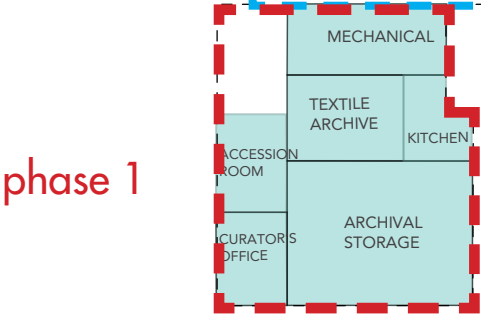
BASEMENT



FIRST FLOOR



BASEMENT



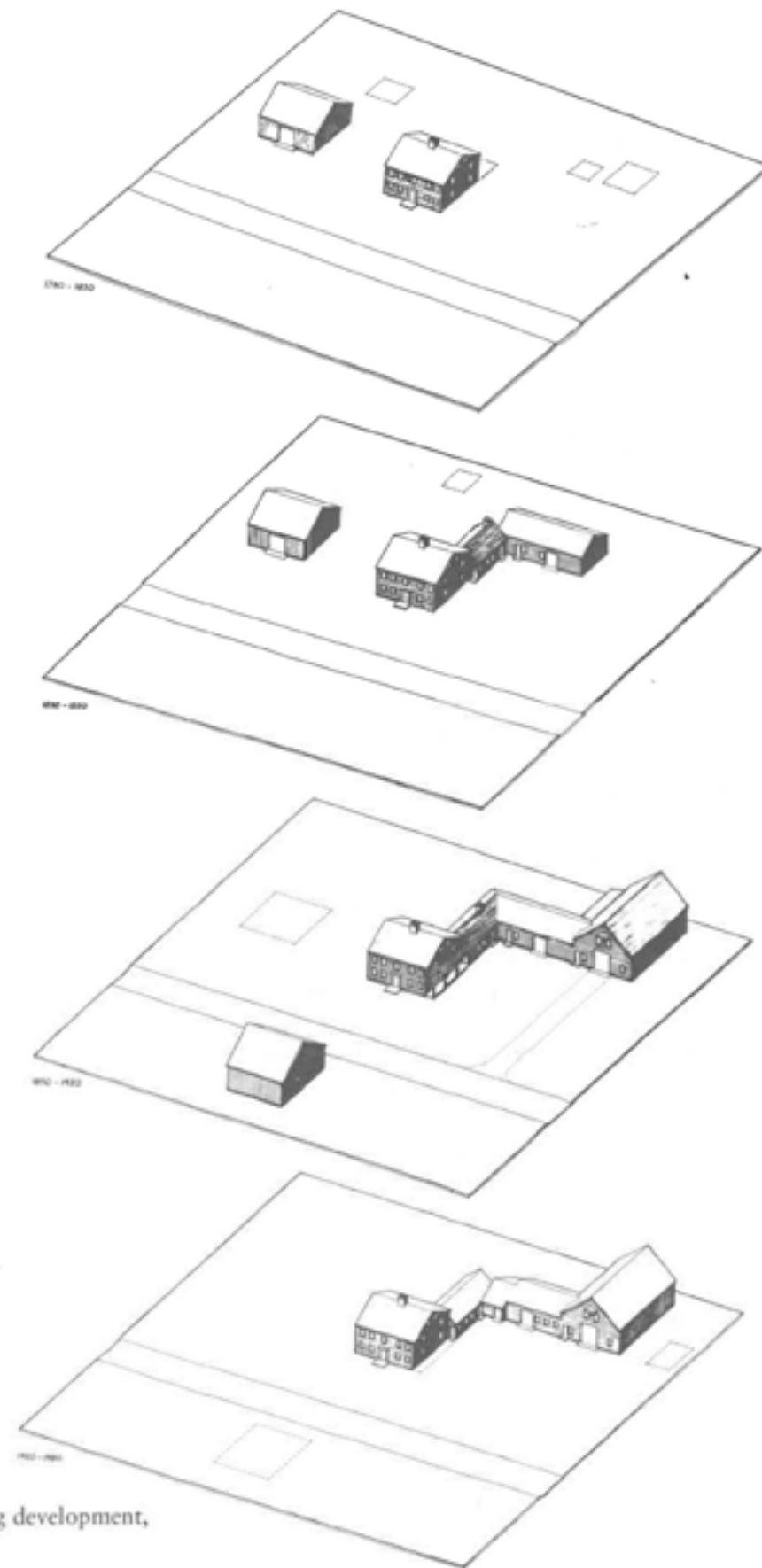


Fig. 75. Bacon Farm, building development, 1780–1980, axonometrics.

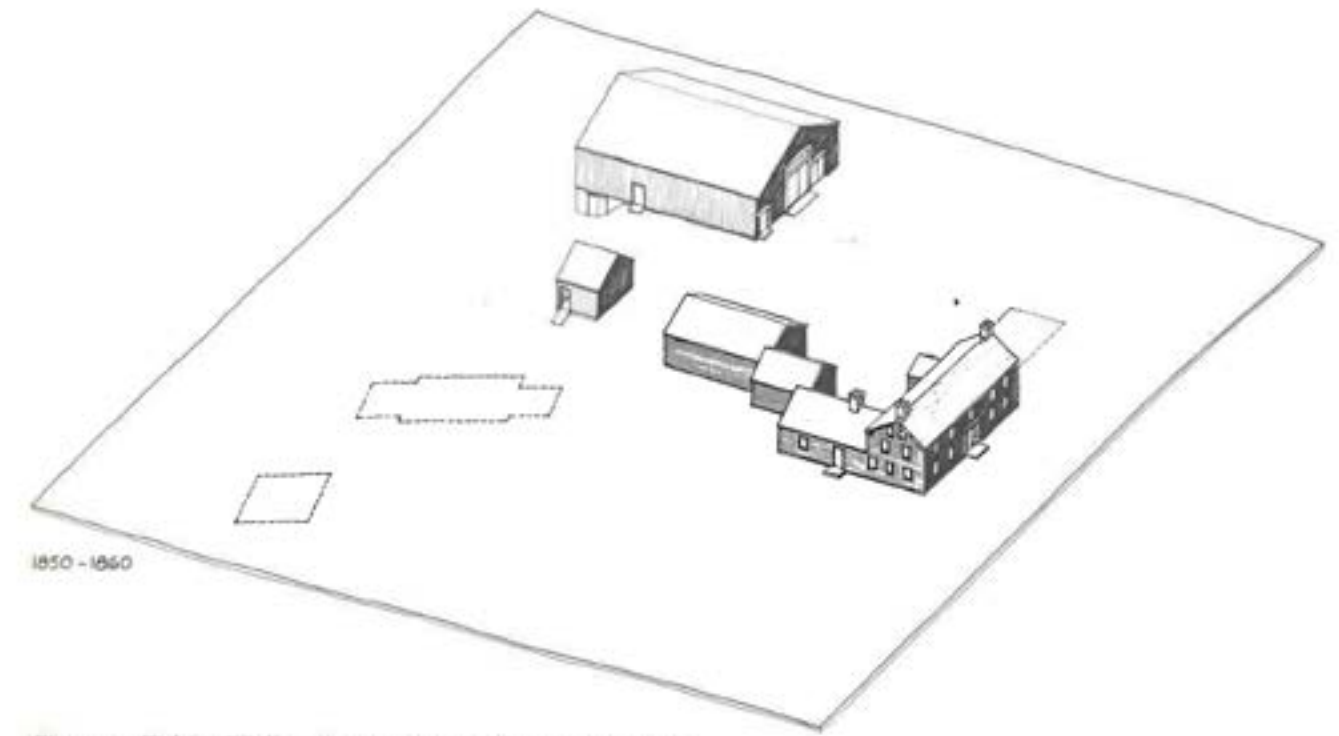


Fig. 131. Tobias Walker Farm, 1850–1860, axonometric.

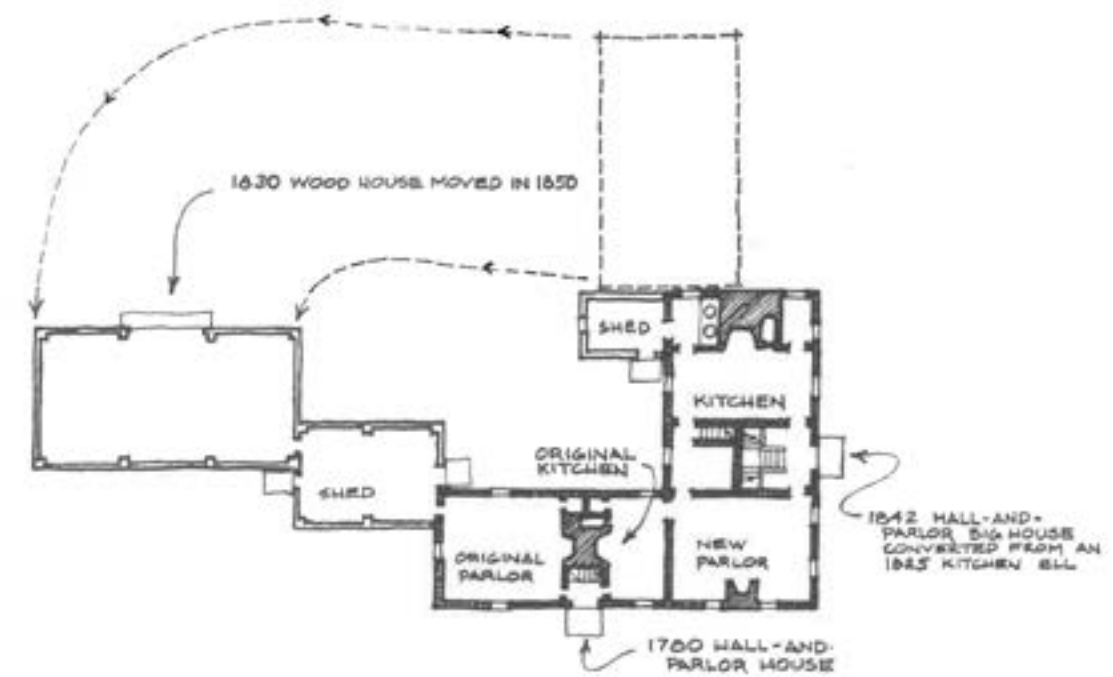
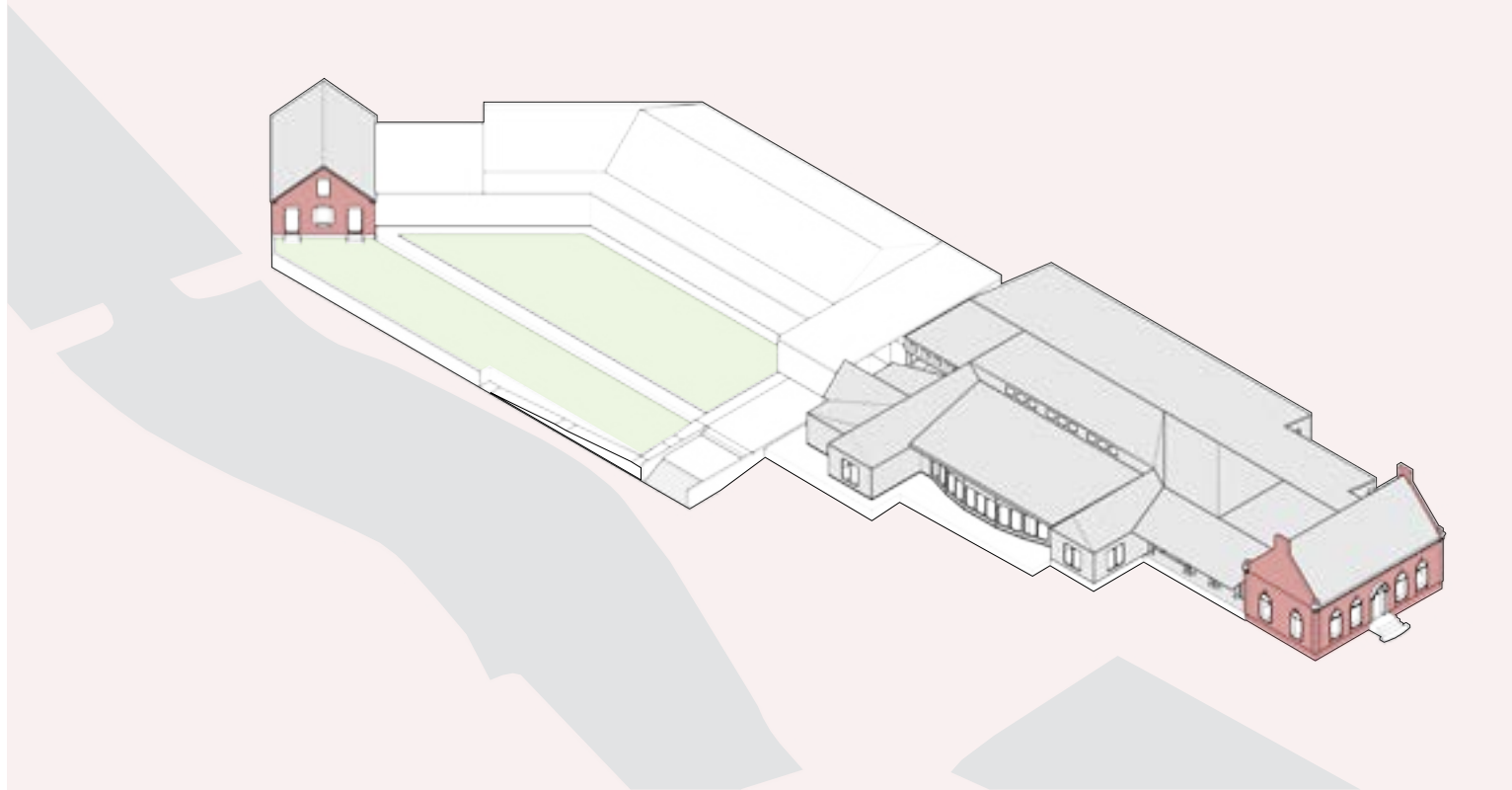
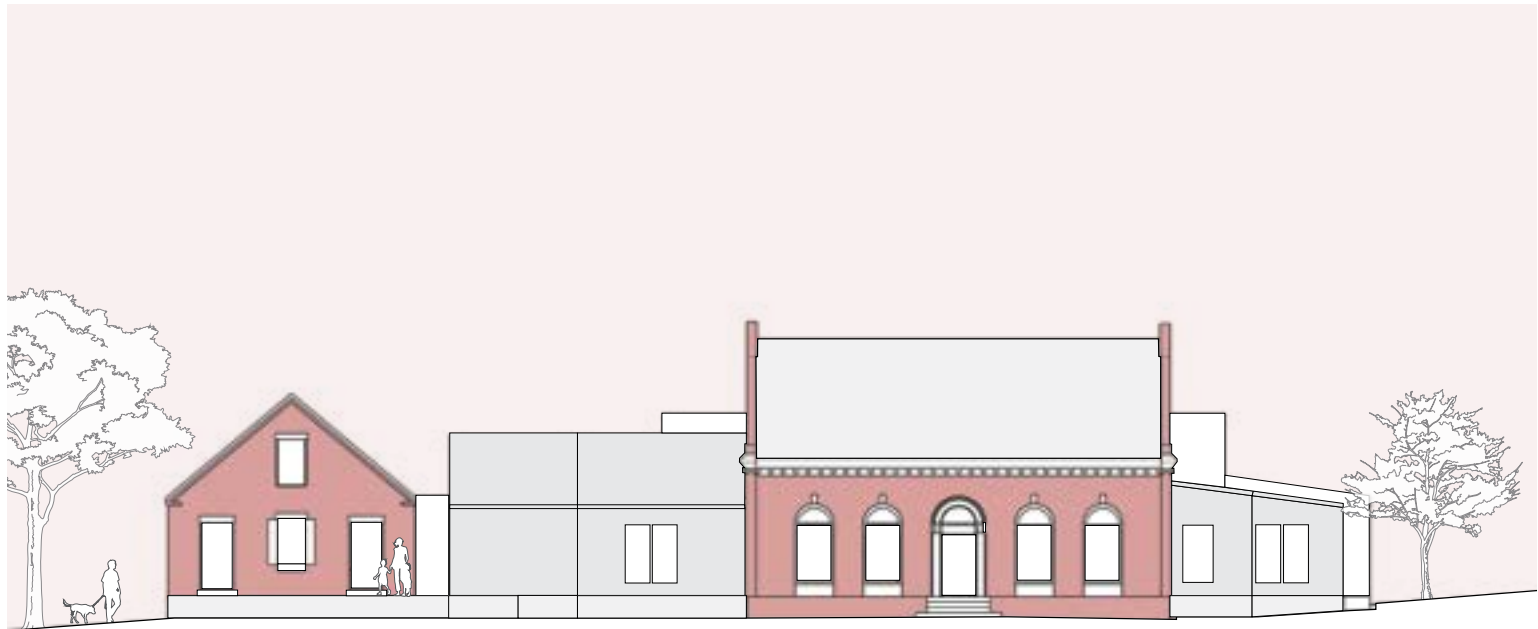
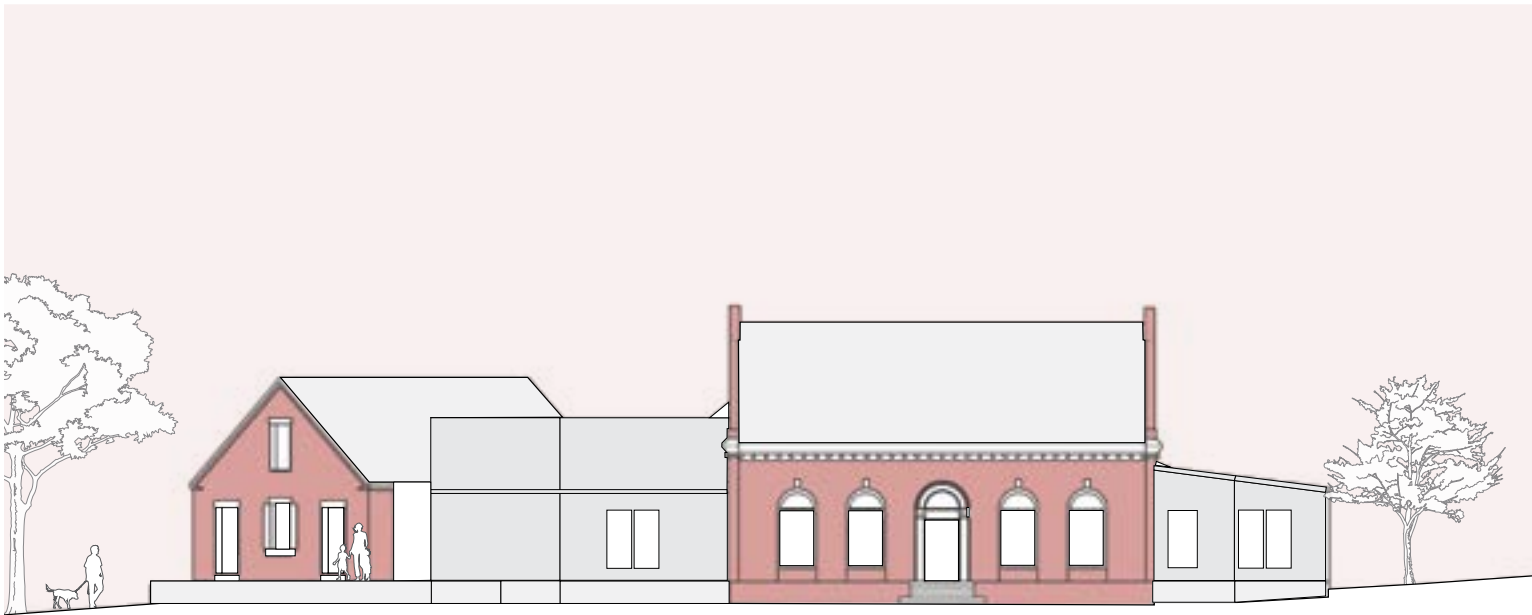
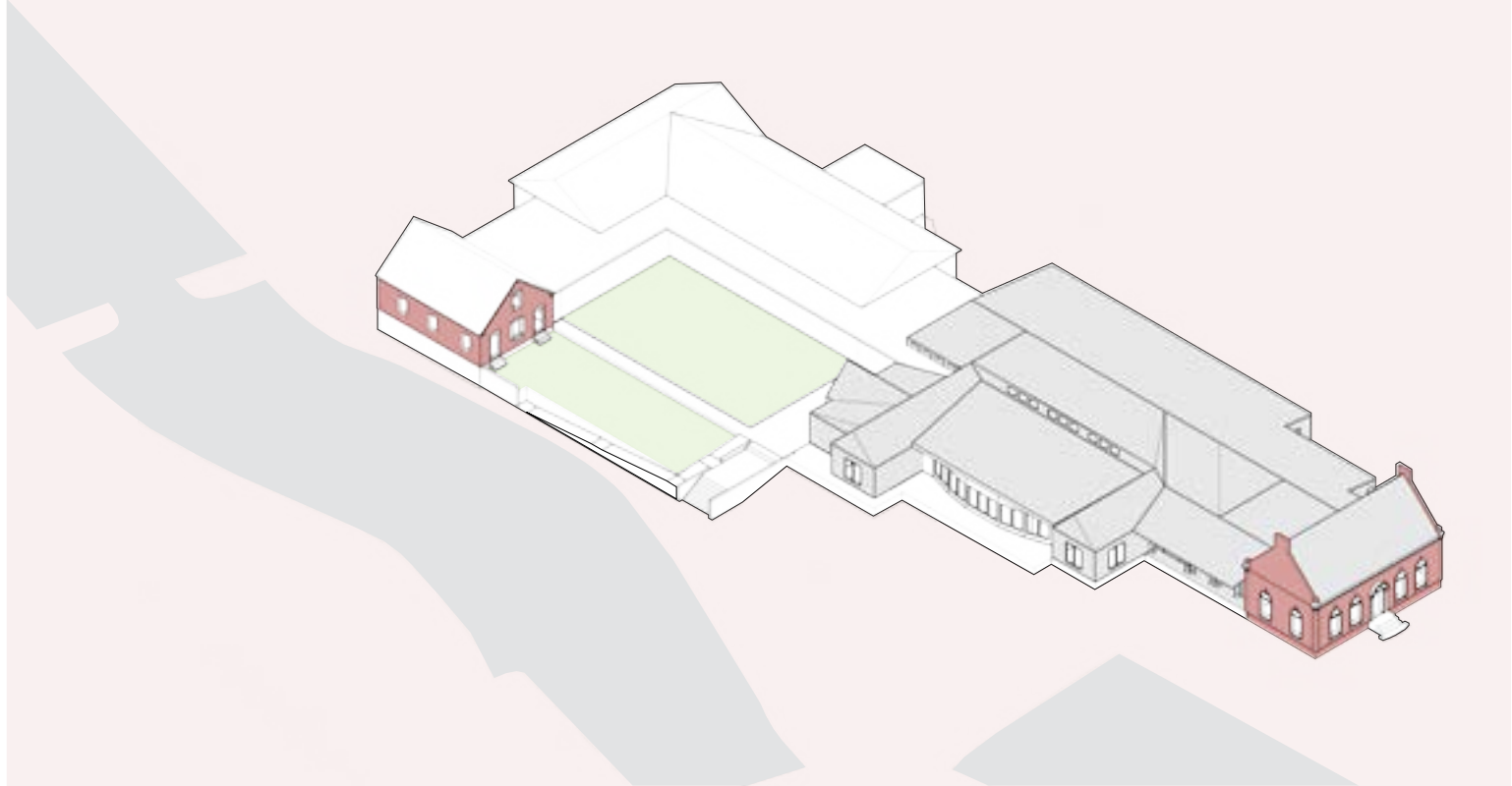


Fig. 132. Room and building arrangement, 1855. Tobias Walker Farm.

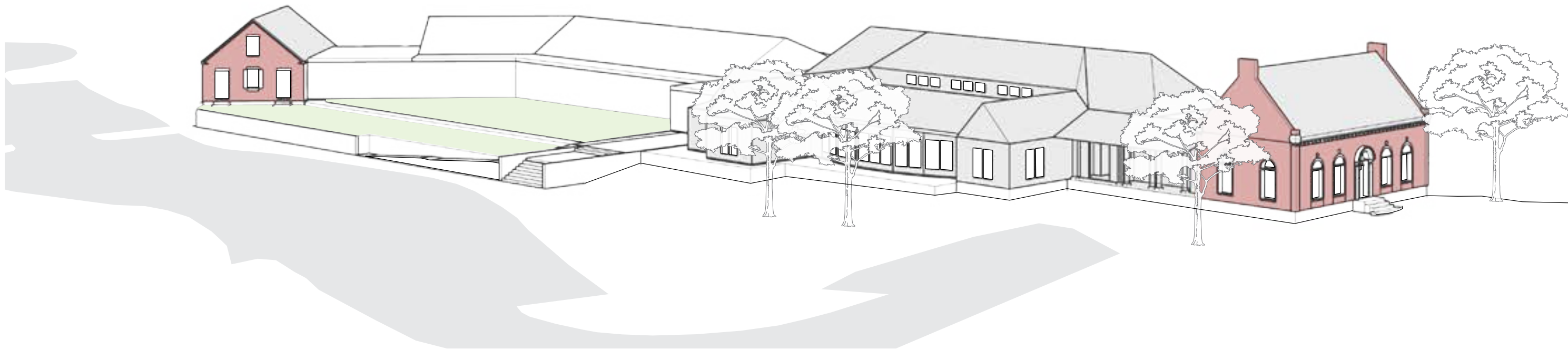
OPTION A



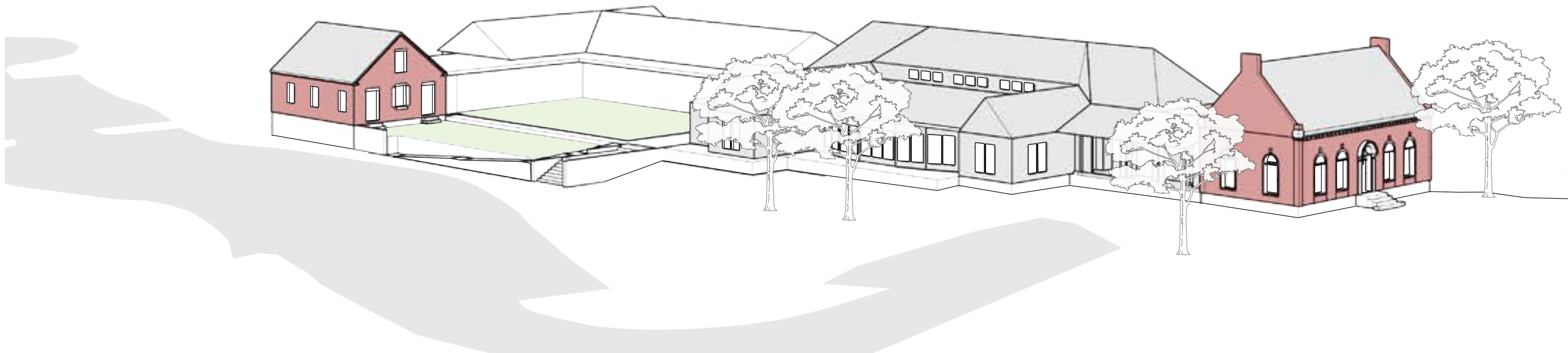
OPTION B

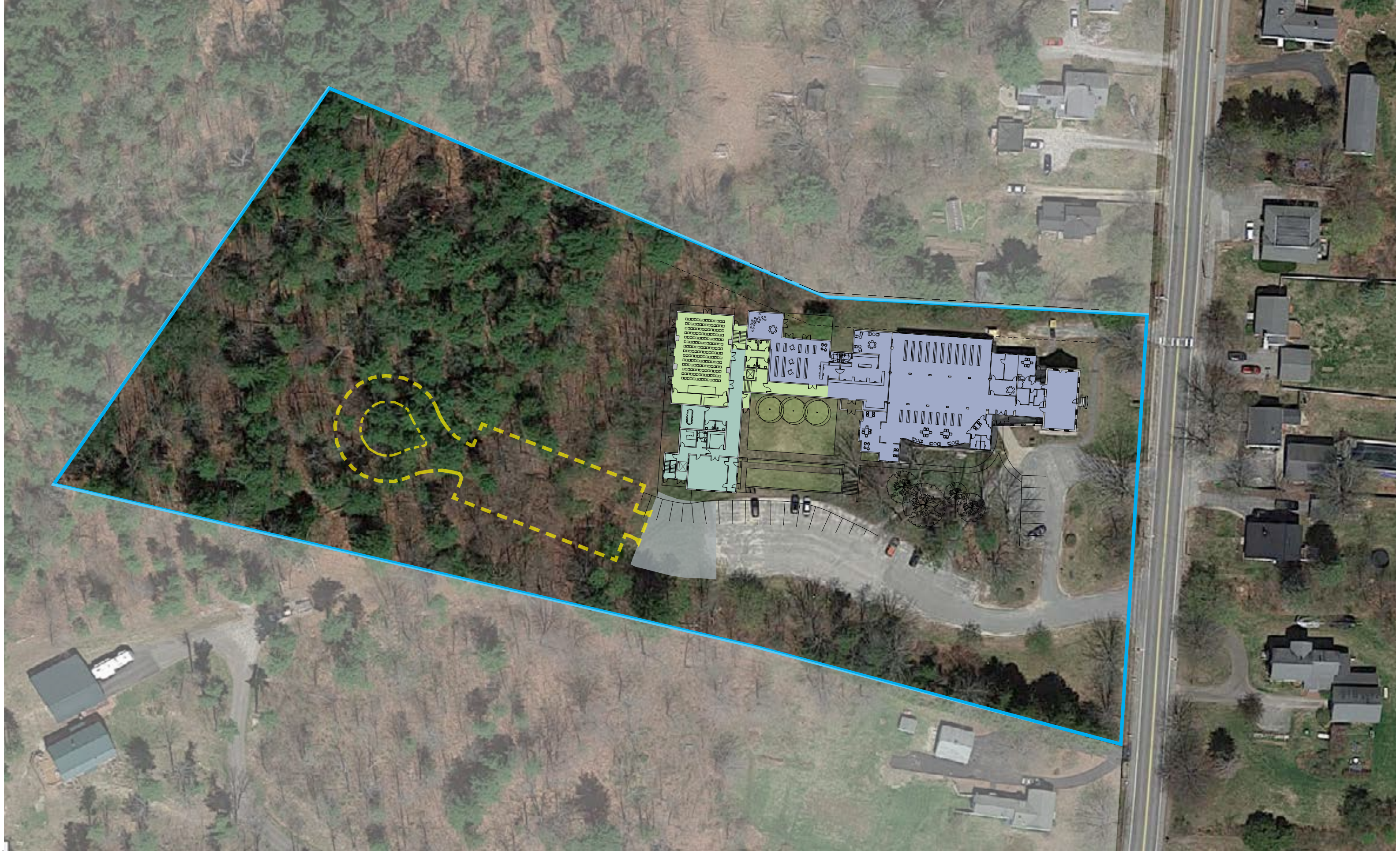


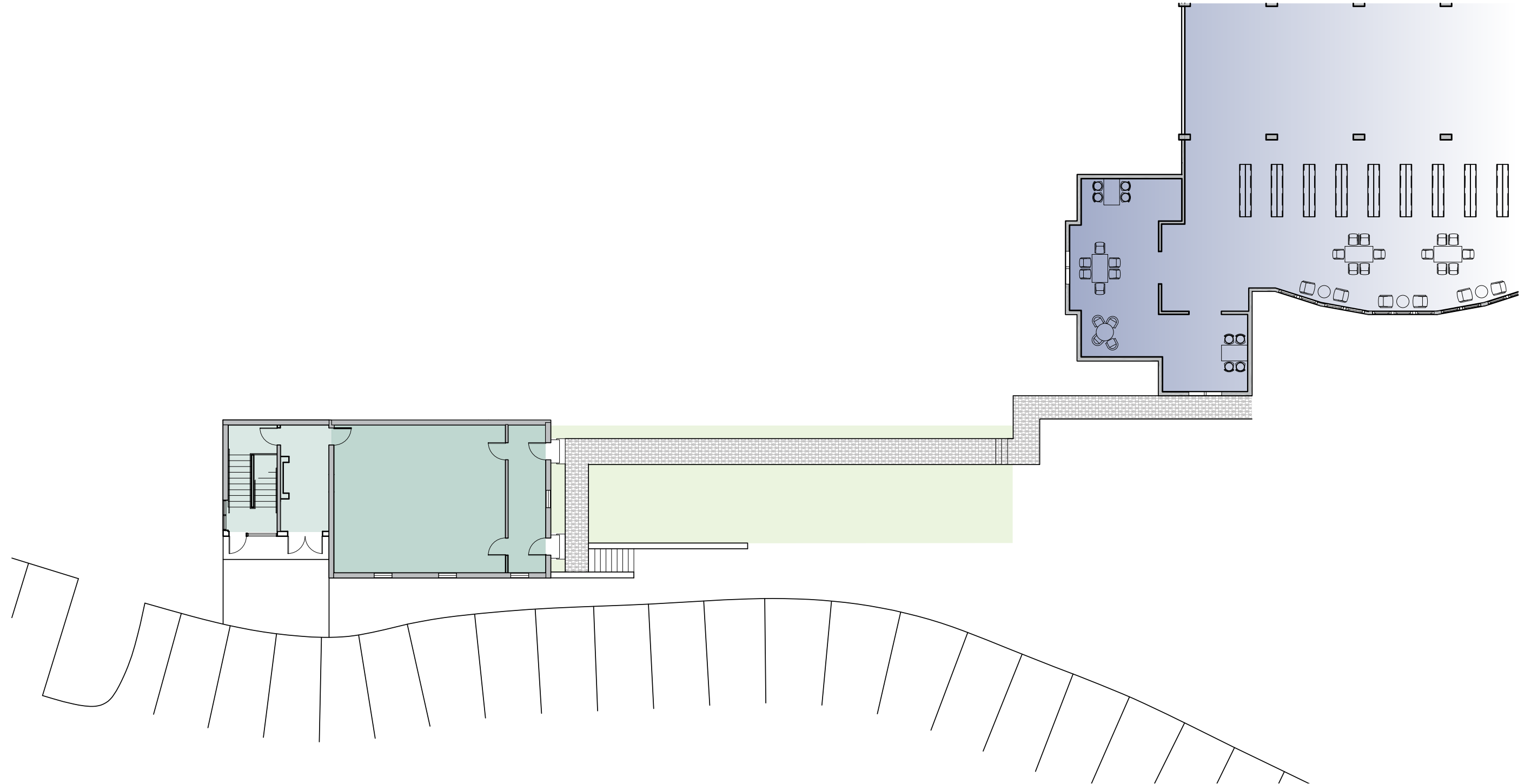
OPTION A

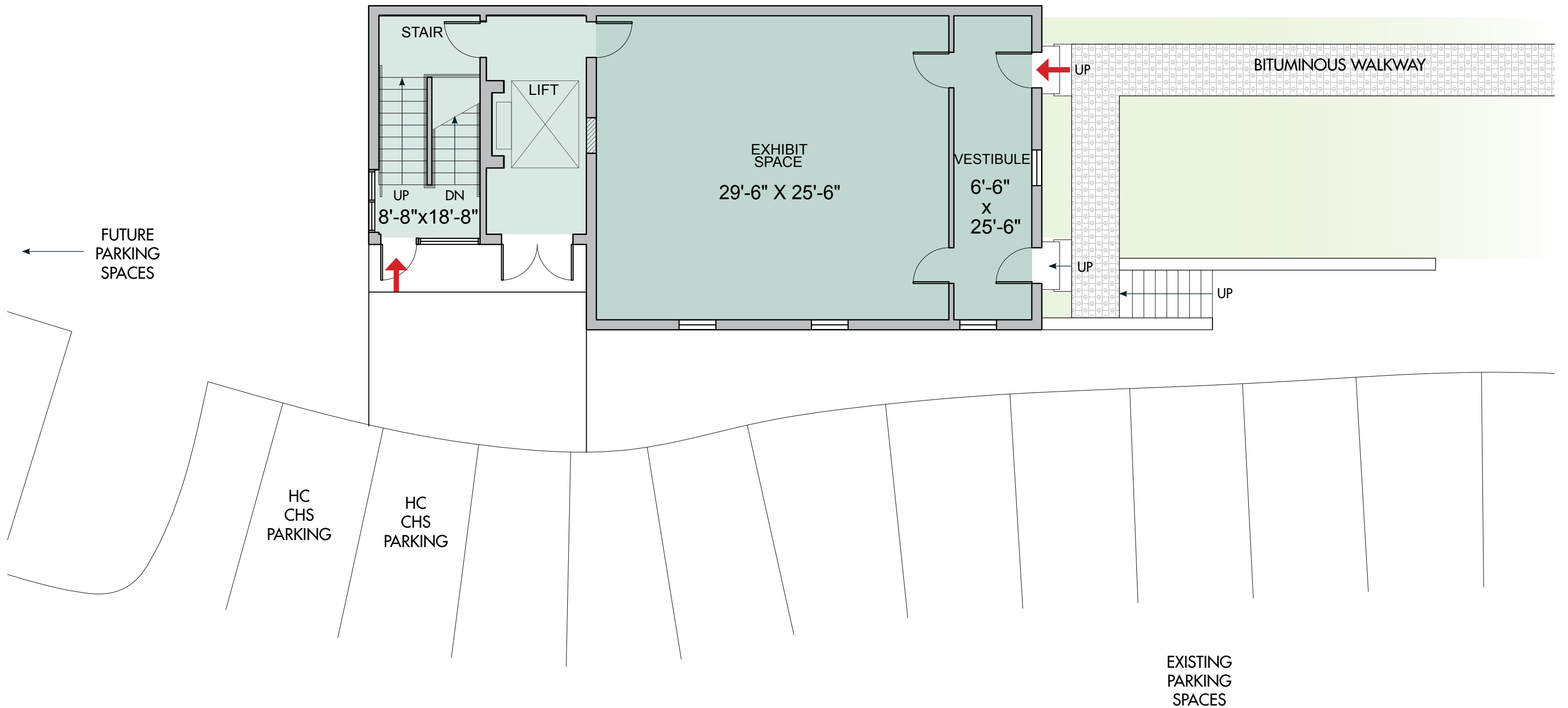


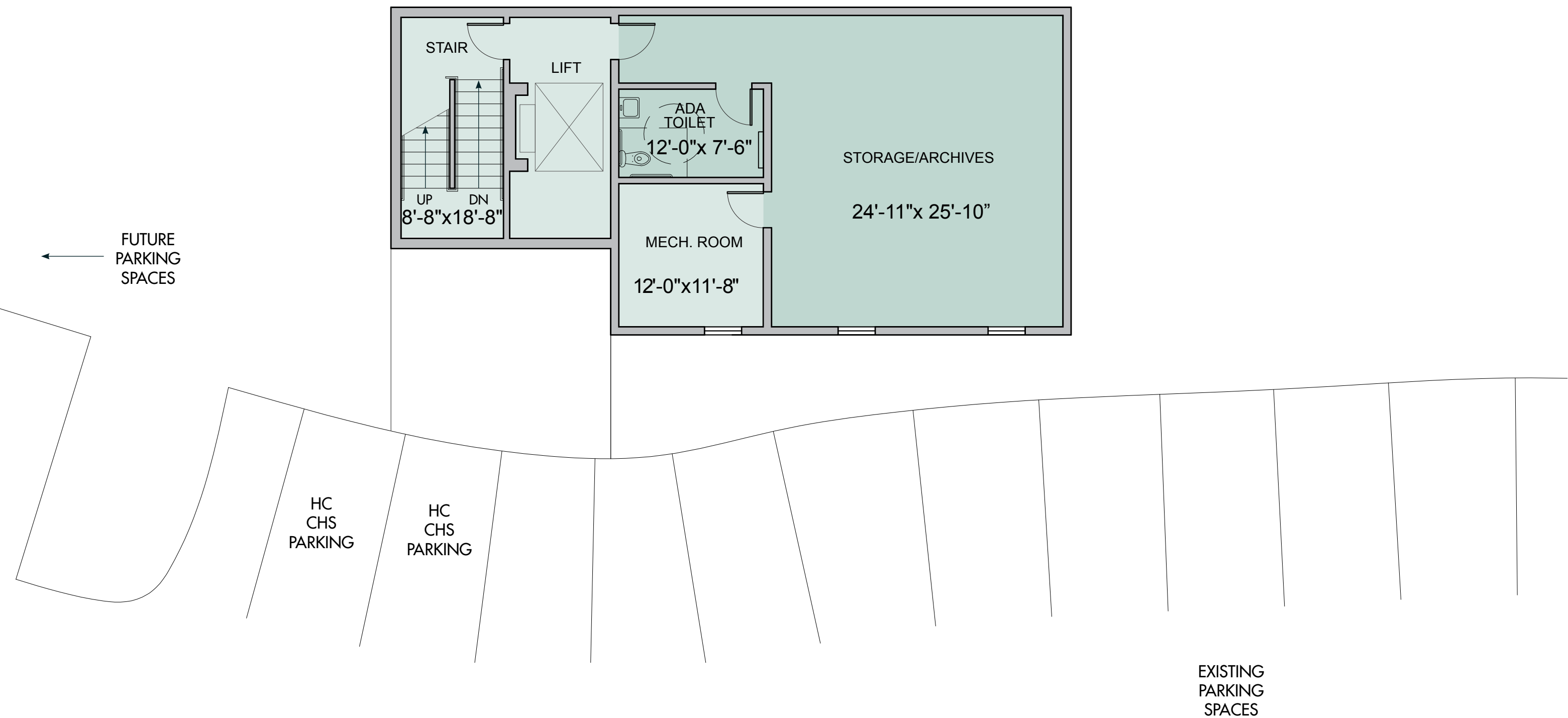
OPTION B

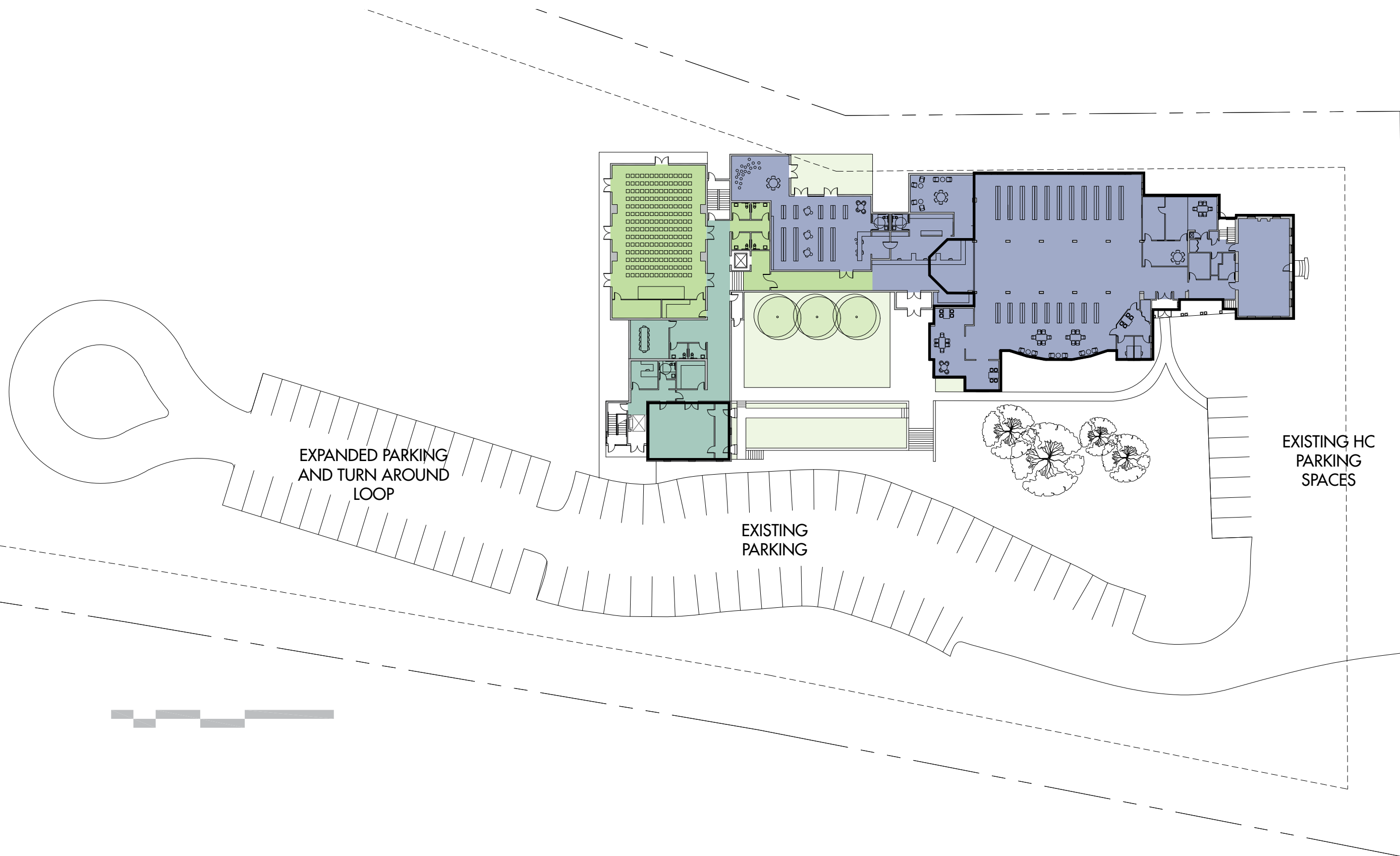


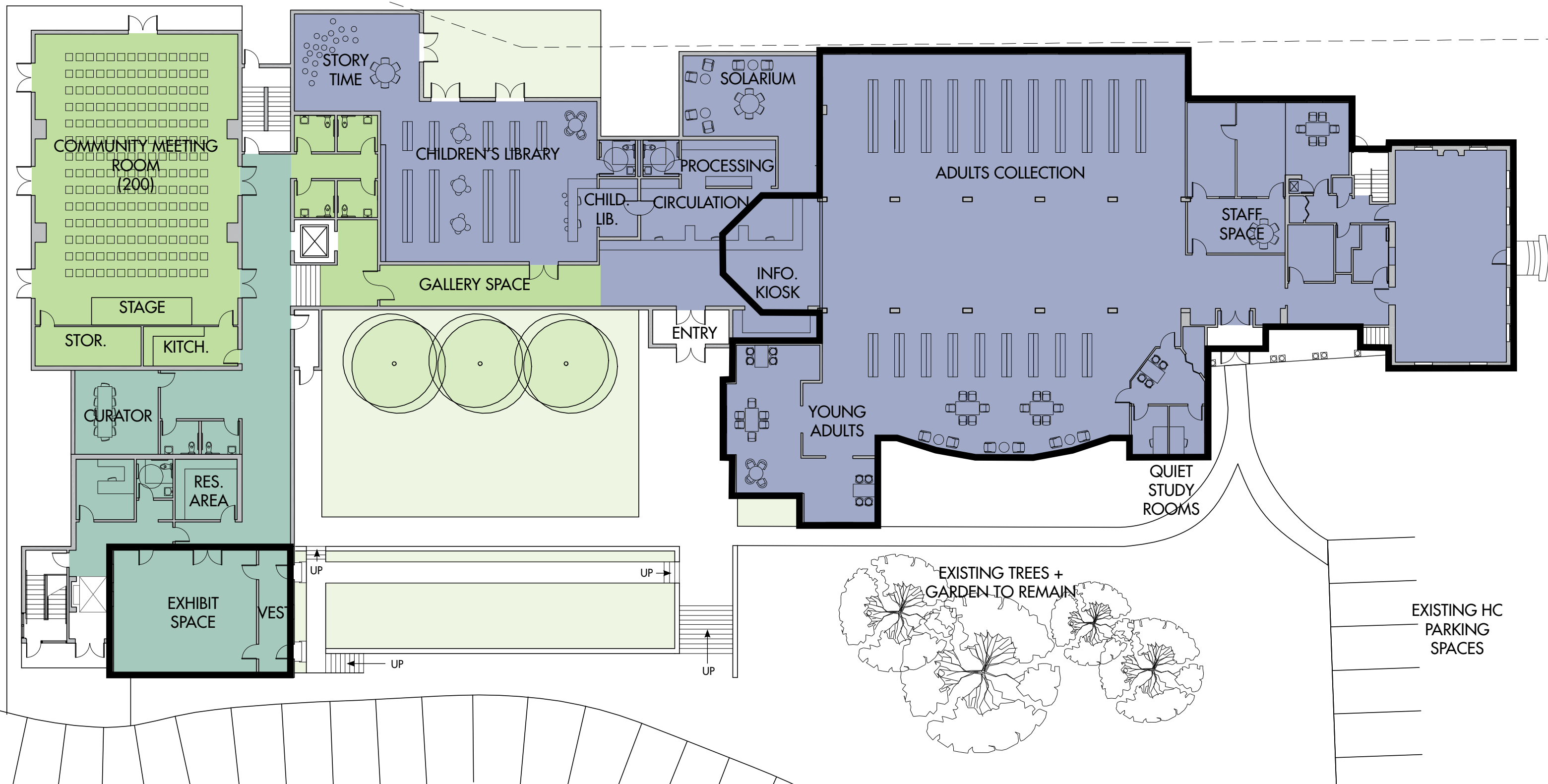


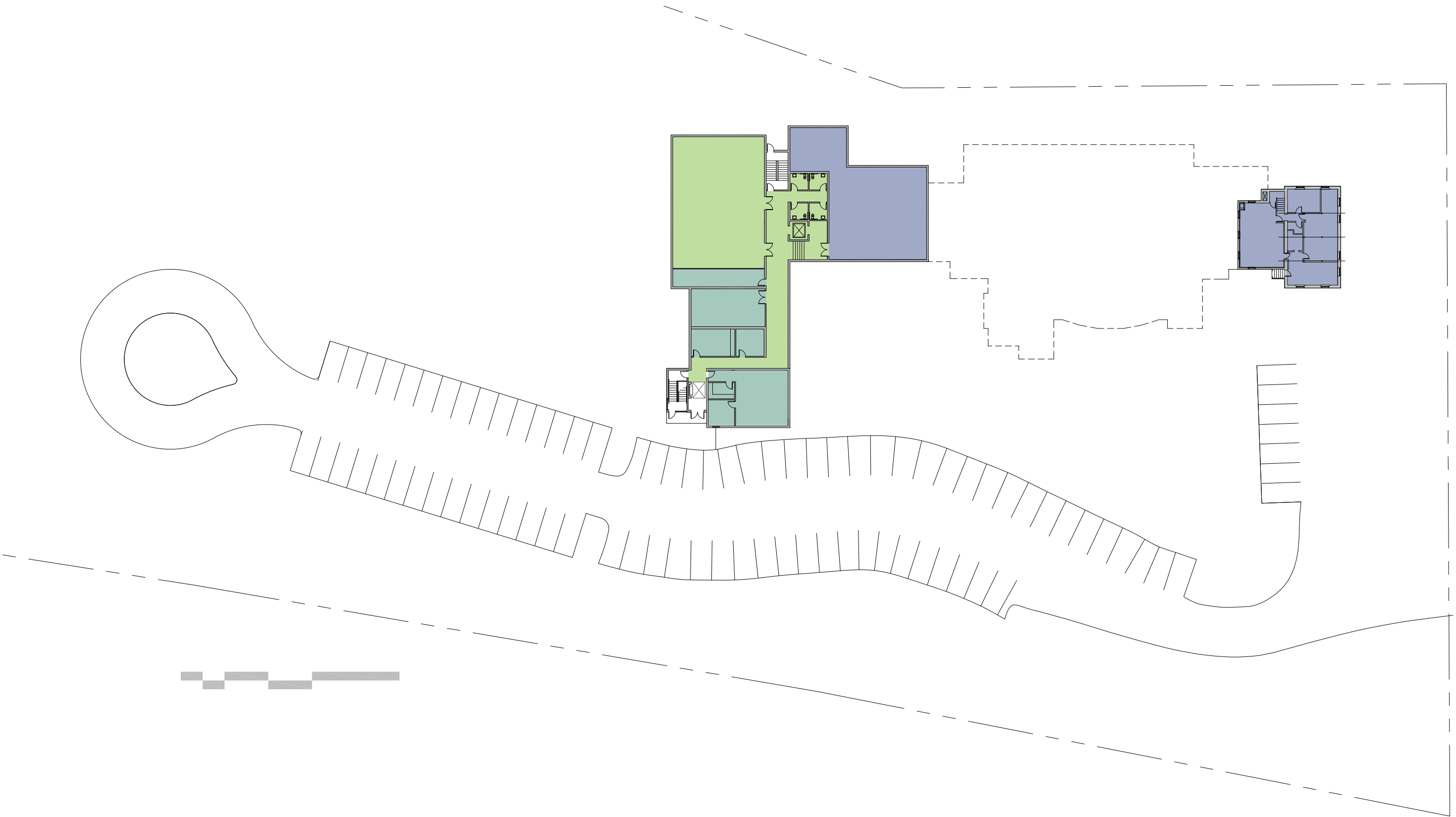


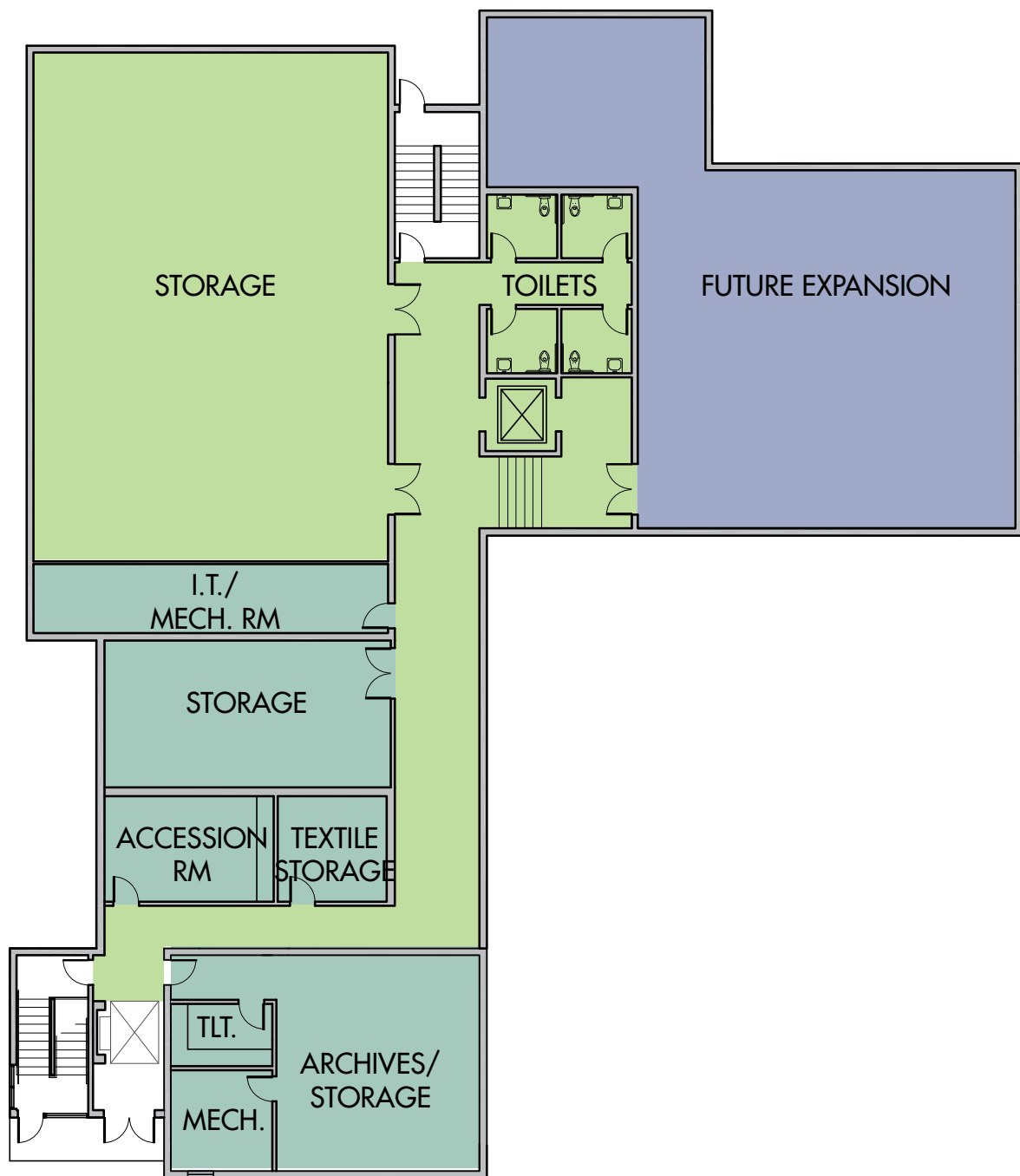




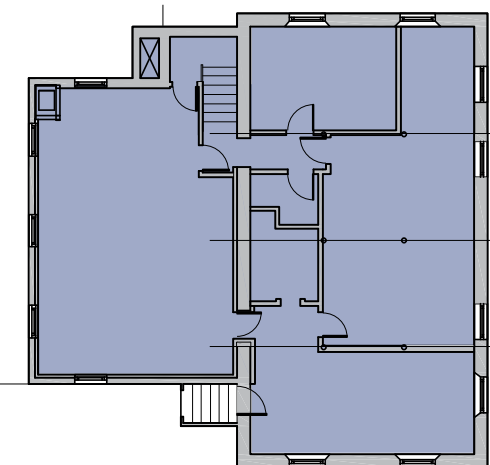








LIBRARY FOOTPRINT
(ABOVE)









Cumberland Historical Society & Prince Memorial Library Expansion Project



August 26, 2019
Town Council Presentation

