

# How Things Have Changed!

Since the building boom in the 1960s, the Greely '50s wing was torn down; NYMS burned, was rebuilt, and subsequently closed; Cumberland Elementary/Drowne Road School opened and closed at least twice, and is now senior housing; a new Greely Middle School was built in 2004 and has already been enlarged. Countless other additions and renovations have been completed. Pownal, after being rejected three times for inclusion in MSAD51, finally joined with Durham and Freeport to form RSU5. Chebeague Island became a town unto itself in 2007, and its students no longer attend MSAD51 schools. Meanwhile, our district enrollment has increased—from 1,030 in 1966 to a high of 2,348 in 2001. In 2016, enrollment is at 2,028.

## Our 50th anniversary of our MSAD is a good time to reflect on a few non-building changes.

### Sports for ALL

Nowhere are changes more apparent than in the area of womens' sports. In 1966 there were three team sports for female students; basketball, softball, and swimming. If those didn't suit you, you might try cheering, majorettes, the riding club, the ski club, or the girls' bowling club. Today there are 15+ team sports available for female students, largely due to Title IX legislation passed in 1972.

Fifty years ago girls' basketball was six-on-six, with forwards restricted to the frontcourt and guards to the backcourt. Players could dribble only three times. The game rules were intended to limit exertion and keep physical contact to a minimum. Some who recall the games would say spectator interest was also held to a minimum!



Above: Greely's 1960s basketball uniforms reflected the belief that females were, and should be, less active than men.



Left: Greely Field Hockey, then and now started in 1967.

### The Arts

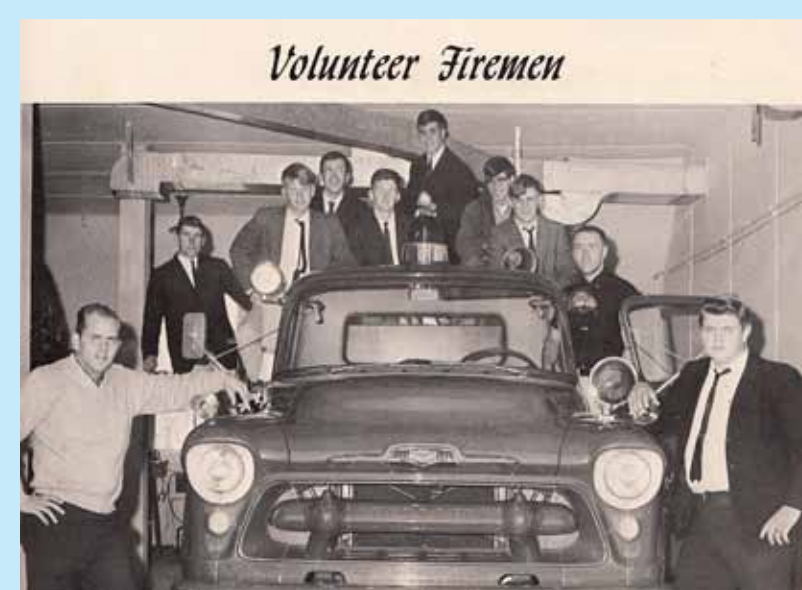
Just as in 1966, MSAD51 students have many opportunities to participate in the arts. But there's more to offer in 2016. Music and art in the lower grades lead students to high school arts: Madrigal Singers, Greely Drama, Concert Band, Jazz Band, Chorus, studio art, poetry and narrative writing. The Arts Alliance lends community support.



Right: Since 1966 the center for drama, special productions, music and choral presentations has been Greely's auditorium. Far right: the proposed Performing Arts Center.



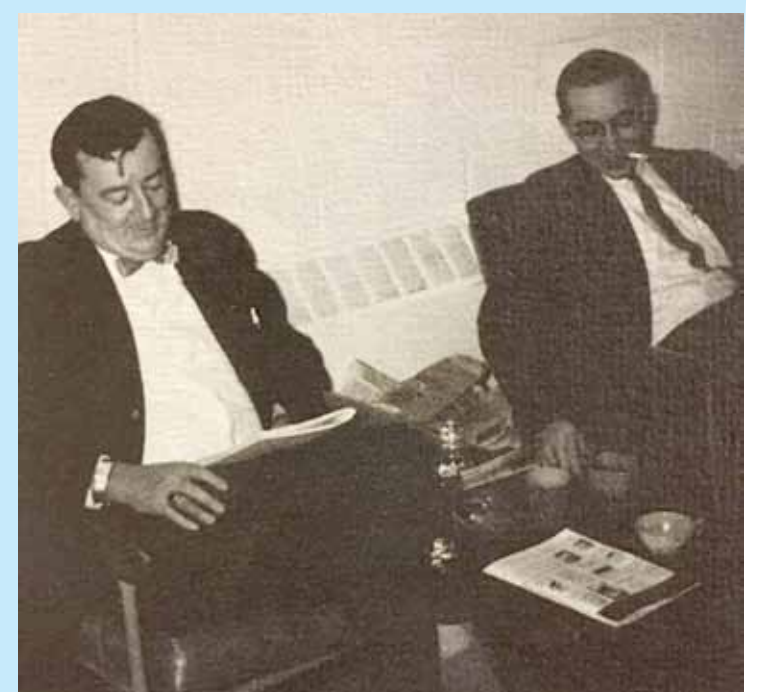
### Everybody Participates



Fifty years ago, traditional roles were the norm. There was a Betty Crocker Award; Hi-Lions was a male-only club. Today, young men and women alike participate in the Science and Technology Club, Global Awareness Club, Bigs and Littles, Envirothon, Community Service, and more.

### Healthy Change

Greely students of the 1960s remember walking by the Teacher's Room and seeing smoke billow out from under the door! More than 40% of adults smoked, compared to less than 17% in 2016.



### Spirit

In the 1960s, parents and students alike rode spectator buses to basketball games played in Waldoboro, Boothbay, and beyond. On the way home there



was a lot of singing on the buses ... especially if Greely won!

### International Focus



In 1966 Greely hosted one of its earliest exchange students, Chilean Julio Effa-Manriquez. Today country flags representing each of the school's exchange students since 2005 are displayed in Greely's front lobby.

### And the Future?

What's beyond 50? What will change over the next fifty years? In 2016, voters are weighing the pros and cons of constructing a community performing arts center. What will we be debating in 2066?

One thing that won't change: the pride citizens of North Yarmouth and Cumberland have in their shared school community. **Happy Birthday, MSAD51!**