

FIELD OBSERVATION REPORT

Project: Longmeadow Rd & Ole Musket Rd – Drainage Improvements
Client: Town of Cumberland
GP Field Rep: Sam Foglio (SF) – AM
Kassey Northrop (KN) – PM
Weather: Clear, Sunny
Time onsite: 9:30 AM – 10:30 AM/ 1:30 PM – 2:30 PM
Contractor: A.H. Grover, Inc.
Distribution: File; Town of Cumberland

GP Project No: 3656
Visit Date: April 21, 2023
Report Date: April 24, 2023
Temp. Range: 45-48°F

Work in Progress

- A.H. Grover, Inc. has installed CB 5 and CB 6.

Work Conducted by GP Representative

- Review the construction for drainage improvements on Longmeadow Road.

Discussions & Observations

Overall Longmeadow (04/21/23)

- Prior to arrival in the morning, A.H. Grover, Inc. had installed approximately 33.3 feet of 15" Perf. SD from the 180 feet installed towards CB 5 on 04/20/23.
 - The 33.3 feet of 15" Perf. SD appeared to be embedded with MaineDOT 703.22 Type C ¾" Crushed Stone to the spring line, and backfilled approximately 1.75 feet from the spring line with the same material.
- While on site, CB 5 was placed on what appeared to be a ¾" stone base. (Photo 1) The 33.3 feet of 15" Perf. SD described above was installed to CB 5, then backfilled with material consistent of MaineDOT 703.22 Type B Underdrain to approximately 18" below the existing grade and compacted with efforts of a plate compactor. (Photo 2)
 - A 20-foot segment of 15" Perf. SD was installed with material consistent with MaineDOT 703.22 Type C ¾" Crushed Stone from CB 5 towards CB 3 prior to backfilling CB 5. The 20-foot segment was backfilled with the ¾" crushed stone, approximately 1.75 feet from the spring line. (Photo 3) Material that appeared to be MaineDOT 703.22 Type B Underdrain was used to backfill CB 5 and the 20-foot segment of pipe to approximately 18" below existing grade. (Photo 4)
 - A.H. Grover, Inc. continued to excavate towards CB 6 upon leaving in the morning.
- Upon arrival in the afternoon, approximately 80 feet of 15" Perf. SD was installed towards CB 6 and Matt Grover and crew were actively working on excavating the area for the placement of CB 6.
 - The 15" Perf. SD appeared to be installed with the same efforts as described above.
 - CB 6 was installed on what appeared to be a ¾" stone base. (Photo 5)
 - While leaving the site, the crew installed the rest of the 19 feet of 15" Perf. SD to CB 6 and actively began to backfill the 15" Perf. SD segment and CB 6 with material that appeared to be MaineDOT 703.22 Type B Underdrain.
 - CB 6 appeared to be installed in the correct location post road-shift.
- Ledge rock did not appear to be present today.
- Crew members with A.H. Grover, Inc. makes efforts to avoid underground utilities.
 - Photo 6 shows a direct burial of conduit, embedded with sand at 8 Longmeadow Road, avoided by hand shoveling.
- A.H. Grover, Inc. makes efforts to communicate with homeowners.
- Temporary erosion and sedimentation control measures were installed.
 - Straw Wattle and Anchors with 24" stakes were installed around the perimeter of the northern portion of the cul-de-sac area. (Photo 7)
 - The catch basins were temporarily installed dry with fabric to avoid any wash-out over the weekend. (Photo 8) The frame and covers currently installed are temporary, as they are not cascade style.



- Ben Grover has expressed concerns about curb installation on Longmeadow Rd and requests that we meet in person to discuss proceedings.
- The table below reflects the approximate quantities as of the end of the day April 21, 2023:

Item/Description	Units	Today's Quantities (04/21)	Quantities to Date
203.21 – Rock Excavation	CY	0	2.13
604.131 – 4' Diameter Catch Basin	EA	2	8
605.12 – 15" Underdrain Type C	LF	132.3	312.3

People on Site

- Ben Grover; A.H. Grover, Inc.
- Matt Grover; A.H. Grover, Inc.
- Stewart; A.H. Grover, Inc.
- 2-3 Person Crew; A.H. Grover, Inc.

Visitors

- None

Concerns or Questions

- **Continue to monitor ledge rock.**
- **Curbing installment on Longmeadow Road**

Action Items

- **Communicate with homeowners as needed.**

Prepared By: Kassey Northrop

Reviewed By: Doug Reynolds, PE

If there are any discrepancies, please notify the sender immediately.



Photos



Photo 1 – CB 5 placed on material that appears to be $\frac{3}{4}$ " crushed stone (pointed out in red).



Photo 2 – 15" Perf. SD backfilled with MaineDOT 703.22 Type B Underdrain to approximately 18" below existing grade and compacted with efforts of a plate compactor.



Photo 3 – 20-foot segment of 15" Perf. SD out of CB 5 backfilled with $\frac{3}{4}$ " crushed stone approximately 1.75 feet from the spring line.



Photo 4 – CB 5 and the 15" Perf. SD being backfilled with MaineDOT 703.22 Type B Underdrain.



Photo 5 – CB 6 installed on a $\frac{3}{4}$ " crushed stone base.



Photo 6 – Direct burial of conduit (circled in red) at 8 Longmeadow Road.



Photo 7 – Straw wattle installed around the perimeter of the northern portion of the cul-de-sac.

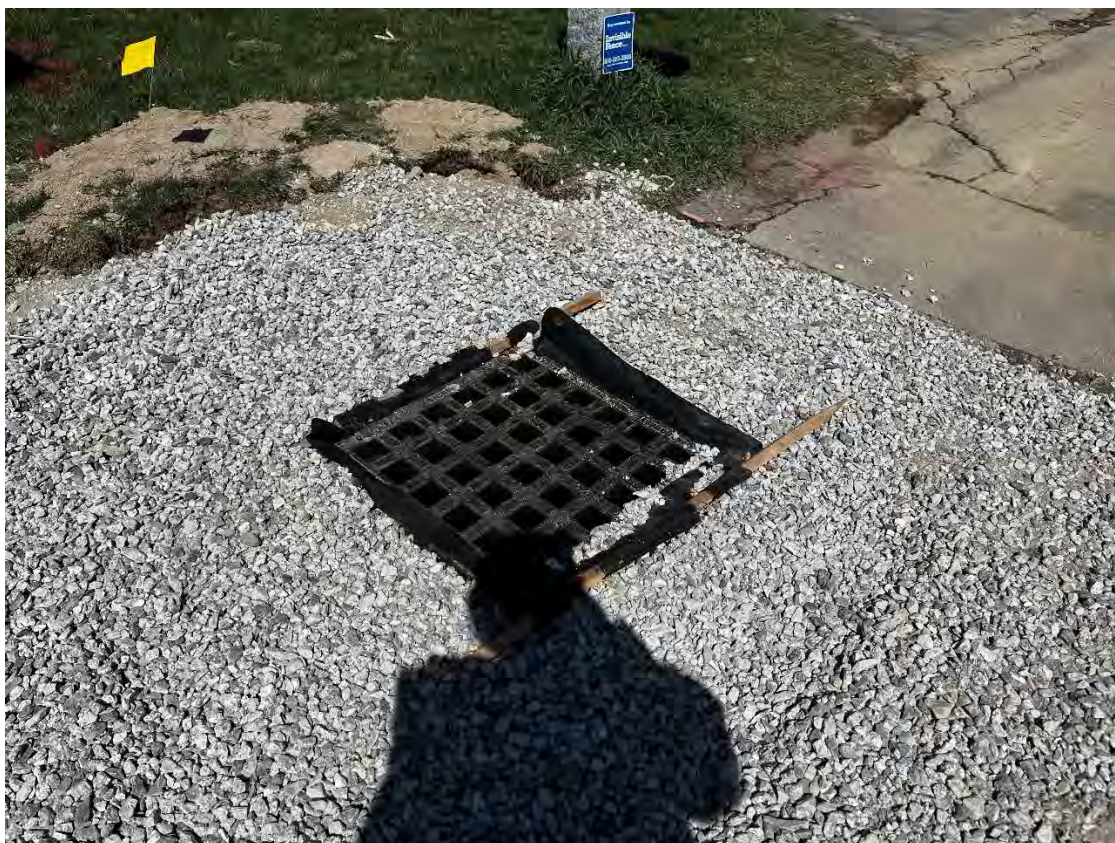


Photo 8 – Catch basins installed temporarily dry for weekend rain.