

# Public Services

Christopher Bolduc - Director of Operations / Public Services

Toby Young – Val Halla Golf Course Superintendent

Steve Googins – Public Works Foreman

Ted Bosarge – Parks Superintendent

Laura Neleski - Administrative Assistant

It's my pleasure to submit the 2013-2014 annual report on behalf the Public Services Department. The Departments once again gave it their all and continued to maintain the Town roads, parks, trails, building infrastructure and the Golf Course in excellent condition for our residents and visitors. One of the biggest challenges for the departments this year was the winter. Winter started in early October and kept everyone on their toes until April. We moved more snow and used more salt this year than we have in the past 7 years. With all the challenges the crews came together and worked all hours of the day and night to make the town roads safe and the schools ready for the arrival of our children every morning. The residents of the Town of Cumberland are very lucky to have this talented group of people looking out for their safety and welfare. As an example of the talent this crew has, the Town of Cumberland was represented by Dan Burr and Frank Smith in the State of Maine snow plow rodeo in Skowhegan Maine. This event tests the skills of snow plow operators from all over the State of Maine. Cumberland's team came in second place in the State and was two points away from representing Maine in a national competition in Colorado.

In 2013-2014 the Town of Cumberland partnered with the Maine Department of Transportation to complete phase two of Blanchard Road from Skillins Road to Bruce Hill Road. This project greatly improved the drainage on the stretch of road as well as the safety of the road in front of the Fair Grounds. As part of this project we also installed the first section of natural gas pipe that will serve the residents of Cumberland starting in the fall of 2014. Due to the gas main installation in the center of town, we were forced to delay the paving project in the neighborhoods on the west side of Main Street. Our plan is to combine paving in the neighborhoods on the west side and east side of Main Street in 2015 in a large drainage and paving project which will upgrade roads and infrastructure in areas that have had no upgrades in over 40 years.

Christopher Bolduc

Director of Operations/Public Services



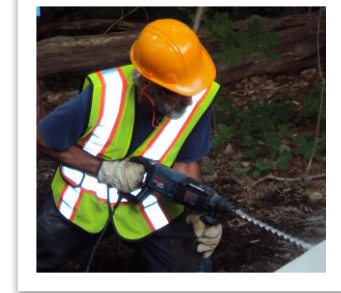
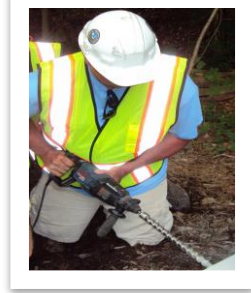
## Public Works

Steve Googins  
Public Works Foreman



The Public Works Division of Cumberland Public Services performs many services for the Town. In the spring and summer months the Department maintains over 70 miles of roads and 4.7 miles of sidewalks. The roads are swept and repaired and their ditches are cleaned and inspected. Storm water management continues to be a priority with the Department. This not only involves cleaning and maintaining the ditches but also maintaining an intricate catch basin and fallout network in order to ensure DEP regulations are met and our public waters are kept clean and safe for the environment and the residents enjoyment.

During the winter months, the Public Works Department plows and maintains these same roads this past winter was a long and harsh winter. Plowing started early this year in November and didn't finish until the end of March. Not only was the season a long one, it was cold as well; in fact, it was the coldest March in the last 20 years! Even though we received over 58 inches of snow this year, many of the storms were small events that were hard to plow and required large quantities of materials to keep the roads safe. The department used over 1700 tons of salt and 1200 tons of sand. Our own Dan Burr and Frank Smith won the 2013-2014 Cumberland County Snowdeo!



In addition to maintaining the road and drainage systems for the town, the Public Works Department serves as a support for Twin Brook Recreation Area, Val Halla Golf Facility, Police and Fire Departments, is the home of the Town's Brush Dump and composting facility. The Department also provides support to the MSAD 51 school department with plowing and sweeping and grounds maintenance when asked. As part of Public Work's support services, this past year the Public Works Department worked in conjunction with the Parks Department to build a new playground for the West Cumberland parks complex.

### Services Provided by Public Works:

#### **Trash Removal:**

Curbside waste removal  
Curbside Recycling  
E Waste Collection  
Brush Dump  
Bulky Item Pickup  
E-Waste Collection

#### **Environmental:**

Composting Facility  
Compost testing results are available at [www.cumberlandmaine.com](http://www.cumberlandmaine.com)  
Waste Oil Recycling - Residents may bring their used oil to the  
Public Works Garage during Brush Dump hours.  
Storm Drain Inspections and Maintenance  
Street Sweeping & Catch Basin Maintenance

#### **Road Maintenance:**

Snow Removal for Roads  
Sidewalk Clearing  
Street Sweeping  
Maintaining culverts and drainage  
Patching and Repair  
Brushing and Ditching  
Road Signage

#### **Interdepartmental Services:**

North Yarmouth Sidewalk Plowing  
Fire & Police Vehicle Maintenance  
Heavy Equipment support at Val Halla  
Installation of drainage at Val Halla  
Ongoing cart path revitalization  
Project Support at Twin Brook  
Grading Roads

## Parks Department

Theo Bosarge, III  
Parks Foreman



This Year, the Parks Staff worked in conjunction with the Public Works Department to install a new playground at 115 Blackstrap Road in West Cumberland. This makes a great addition to the football field, baseball diamond and Recreation Hall. The town also added pickle ball courts to the property and now this is a great, multipurpose complex that is a welcome addition to the neighborhood and the entire town.

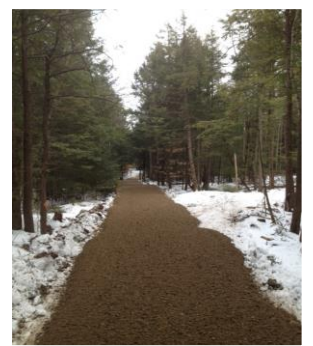


The Parks Department is responsible for maintaining over 500 Acres of Town owned property that includes 22 acres of mixed athletic fields, a baseball field, a softball field and 3 little league fields. The Department maintains the grounds at the Library, Monuments, Cumberland Commons, Twin Brook, Rines Forest, Town Hall, Drowne Road and the Fire Stations.

The Parks Department also maintains over 4 miles of walking trails through the Rines Forest, 1.5 of trails through the woods at the Town Office and over 4 miles of wooded walking trails at Twin Brook.

There are over 22 acres of mixed athletic fields, baseball and softball fields, soccer fields, restroom facilities and more than 4 miles of wooded walking trails in the Twin Brook Facility alone, which take the majority of the Park Staff's time. All the athletic fields at Twin Brook and the West Cumberland facility are mowed 3 times a week during the growing season. This combined with the over 60 acres of park area means our large 12-foot mowers can be seen operating almost daily around Town.

In the winter months, the staff will groom many of the Twin Brook trails for cross country skiing but the staff also supports the Public Works department in plowing the town's roads and clearing the sidewalks; all of which means this is a flexible and well trained group of employees.





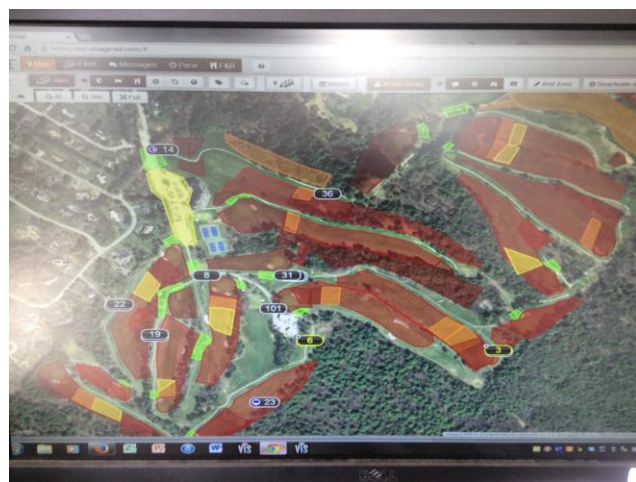
## Val Halla Grounds and Maintenance

Toby Young  
Val Halla Grounds Superintendent



After a very long winter, Val Halla started the 2014 summer off with extensive winter damage and opened with 5 temporary greens. Staff and the grounds crew have worked tirelessly to get the greens back to the quality our golfers have come to expect.

This year saw the welcome addition of the new Visage GPS system. This system gives the golfer the benefit of onboard GPS for hole layout and yardages. This system also gives the staff the ability to monitor all cart usage, showing where each cart is located on the property and who is driving, and also gives us the ability to set parameters for the cart dictating where it can and cannot go and how fast it can go. This allows us to keep the carts out of wet areas and areas that historically have damaged carts. It also allows us to slow them down in high traffic areas such as the clubhouse parking lot and on wet slopes that would otherwise cause damage to the golf course.



In addition to cart improvements, we removed many trees this past winter to allow for better sunlight and air movement; improving the quality of the turf.



In order to improve course play, staff removed trees, shrubs, cleared the ravine to the left of the 4th tee and then expanded the tee further to the left. This allows for an improved look at the 4th hole and also addresses a safety issue with the 5th hole which runs parallel to it.





