

## Public Services

**Christopher Bolduc - Director of Operations / Public Services**

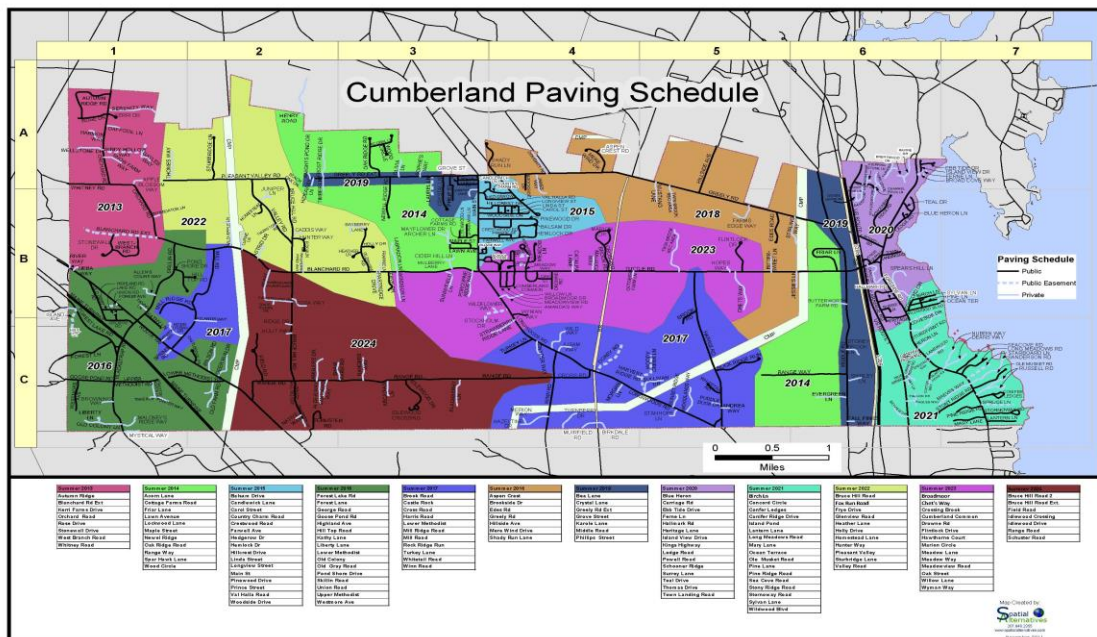
Laura Neleski - Administrative Assistant

It's my pleasure to submit the 2012-2013 annual report on behalf the Public Services Department. The Public Services Department is a team of departments consisting of the Public Works Department, the Parks Department and Val Halla Grounds and Maintenance crew. The staff maintains all town roads and drainage, maintains and inspects all municipally owned buildings, and maintains the senior housing facility. The staff also maintains all municipally owned parks, open spaces, athletic fields, and the Val Halla Golf Course as well as maintaining the towns trail systems in the Rines Forest, Town Forest and Twin Brook. In the winter the crew works together to plow and maintain all town roads and grooms the Twin Brook facility for cross country skiing. The Town is fortunate to have such a dedicated crew overseeing the maintenance and safety of the municipal infrastructure.

This year marked the start of the new twelve year paving plan approved by the Town Council. We completed paving of Greely Road, the Falmouth end of Middle Road and reconstruction and drainage work on Friar Lane. We were also able to partner with the Maine Department of Transportation to upgrade drainage and pave a section of Tuttle Road in front of the Wilson school as well as construct a section of sidewalk from the Commons to Town Hall. It is our hope to continue this sidewalk to Crossing Brook and on to Twin Brook in the future. Next year we are looking forward to paving the west end of Town and the completion of the Blanchard Road drainage and paving project which was made possible through a grant the Town received from the Maine Department of Transportation.

Christopher Bolduc

Director of Public Services



(Available on-line at [www.cumberlandmaine.com](http://www.cumberlandmaine.com))

## Greely Road



Friar Lane

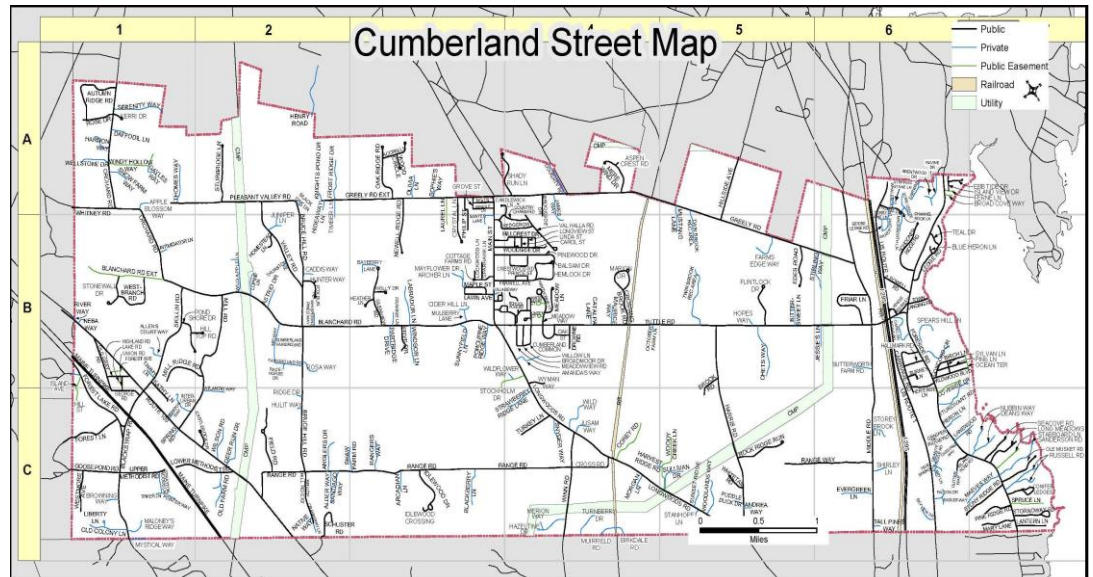


## Middle Road



## Public Works

**Steve Googins**  
**Public Works Foreman**



The Public Works Division of the Cumberland Public Services functions in many capacities for the town. During the winter months the Public Works Department plows and maintains over 70 miles of roads and 4.7 miles of sidewalks. In the spring and summer months those same roads are swept and repaired and their ditches are cleaned and inspected.



Cumberland's D. Burr & J. Liebowitz  
2<sup>nd</sup> Place in Southern Maine Snowdeo  
keeping the streets plowed



B. Copp keeping the  
streets swept



Ongoing Drainage Work  
keeping the roads in good repair

In addition to maintaining the road and drainage systems for the town, the Public Works Department serves as a support for Twin Brook Recreation Area, Val Halla Golf Facility, Police and Fire Departments, is the home of the Town's Brush Dump and composting facility. The Department also provides support to the MSAD 51 school department with plowing and sweeping and grounds maintenance when asked.

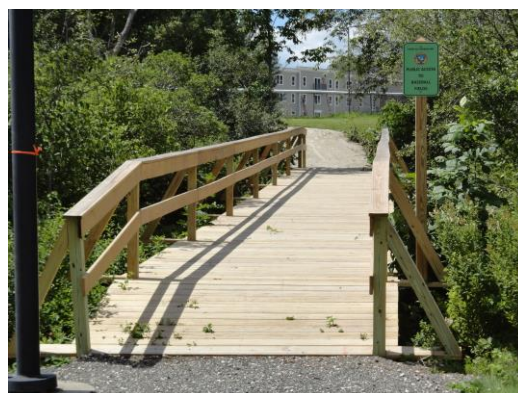


The Public



Works Department processed over 280 work orders this past year; this work consisted of jobs ranging from grading roads to moving tables at the library. No matter if it is a large project or simply assisting a resident with fixing a mail box, the public works crew always completes the task in a professional and timely manner.

As part of Public Work's support services, this past year the Public Works Department worked in conjunction with the Parks Department to build a new walkway from Town Hall to the Town's Little League fields to provide additional parking for events and easier access.



### Services Provided by Public Works:

#### **Trash Removal:**

Curbside waste removal  
Curbside Recycling  
E Waste Collection  
Brush Dump  
Bulky Item Pickup  
E-Waste Collection



#### **Road Maintenance:**

Snow Removal for Roads  
Sidewalk Clearing  
Street Sweeping  
Maintaining culverts and drainage  
Patching and Repair  
Brushing and Ditching  
Road Signage

#### **Environmental:**

Composting Facility  
Compost testing results are available at [www.cumberlandmaine.com](http://www.cumberlandmaine.com)  
Waste Oil Recycling - Residents may bring their used oil to the  
Public Works Garage during Brush Dump hours.  
Stormwater Compliance  
Storm Drain Inspections and Maintenance  
Street Sweeping & Catch Basin Maintenance



#### **Interdepartmental Services:**

North Yarmouth Sidewalk Plowing  
Fire & Police Vehicle Maintenance  
Heavy Equipment support at Val Halla  
Installation of drainage at Val Halla  
Ongoing cart path revitalization  
Project Support at Twin Brook  
Grading Roads  
Plowing Twin Brooks



## **Parks Department**

**Theo Bosarge, III**  
**Parks Foreman**

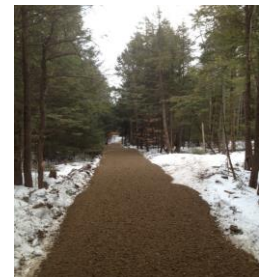


The Parks Department is responsible for maintaining over 500 Acres of Town owned property that includes 22 acres of mixed athletic fields, a baseball field, a softball field and 3 little league fields. The Department maintains the grounds at the Library, Monuments, Cumberland Commons, Twin Brook, Rines Forest, Town Hall, Drowne Road and the Fire Stations.

There are over 22 acres of mixed athletic fields, baseball and softball fields, soccer fields, restroom facilities and more than 4 miles of wooded walking trails in the Twin Brook Facility alone, which take the majority of the Park Staff's time. All the athletic fields at Twin Brook and the West Cumberland facility are mowed 3 times a week during the growing season. This combined with the over 60 acres of park area means our large 12-foot mowers can be seen operating almost daily around Town.



In the winter months, the staff will groom many of the Twin Brook trails for cross country skiing but the staff also supports the Public Works department in plowing the town's roads and clearing the sidewalks; all of which means this is a flexible and well trained group of employees.



The Parks Department also maintains over 4 miles of walking trails through the Rines Forest, 1.5 of trails through the woods at the Town Office and over 4 miles of wooded walking trails at Twin Brook. This Year, the Parks Staff worked in conjunction with the Public Works staff to build three new bridges in the Rines Forest. Between the bridges additions and the extensive trail improvements at Twin Brook, the Parks Department now offers a larger and more comprehensive trail system for its residents.

## **Val Halla Grounds and Maintenance**

**Toby Young**  
**Val Halla Grounds Superintendent**



This past year saw the opening of the new putting green and it looks great. This area provides a quiet, out of the way place for lessons, practice and clinics. The other new addition to the course this year was the new ladies tee on the 4<sup>th</sup> hole. We also completed bunker renovations on numerous holes to improve playability and drainage. With the assistance of the Public

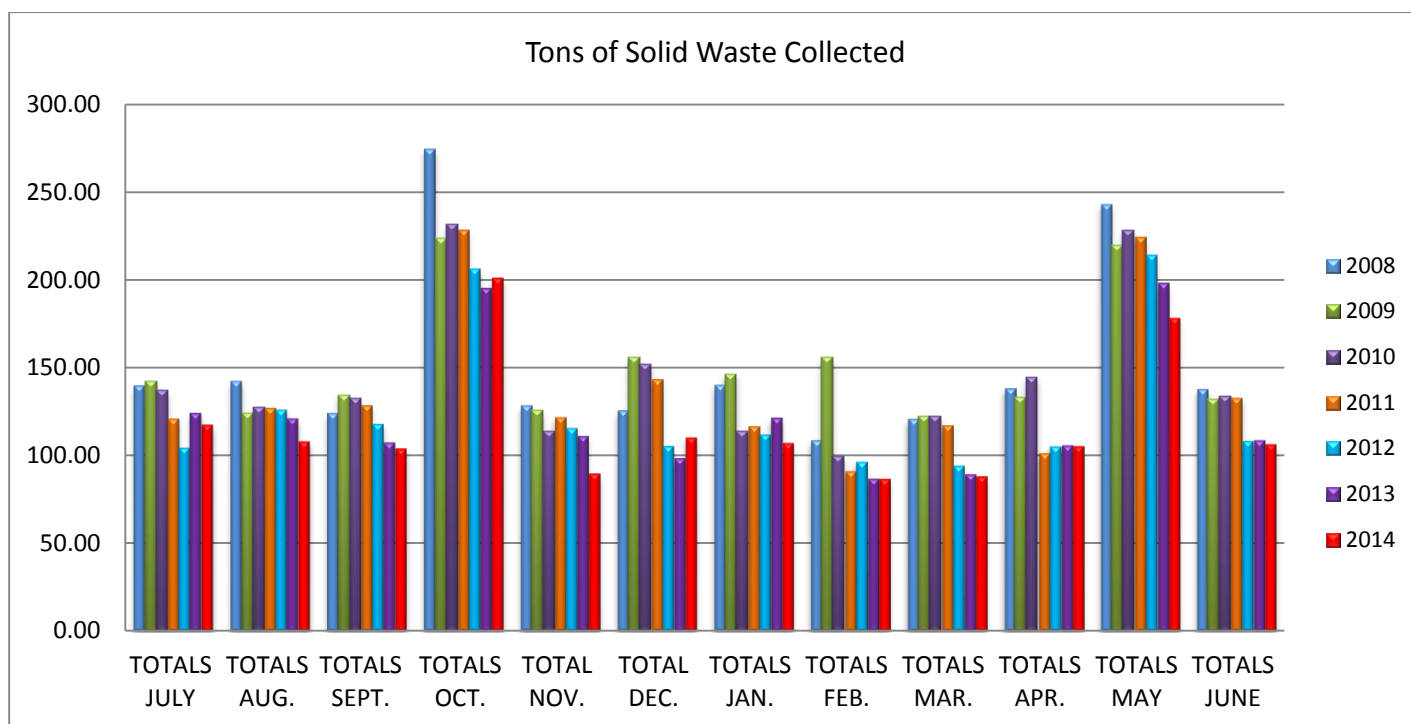


Works Department, approximate 800 feet of drainage around the course and a tee to green cart path were installed in wet areas which will increase the playable area and allow golf carts usage during wet periods.

The staff continues to work on clearing and thinning of several sections of woods surrounding holes to increase air movement and help produce healthier turf. As always, the staff works long, hard days starting early in the morning to ensure the carts, cart paths and the golf course is in great shape this year

Recycling is economical for everyone and Cumberland continues to reduce its waste and improve its recycling. In order to make it easier for our residents, Cumberland participates in Single Sort Recycling. This means you do not have to separate out your recyclables; however, your recyclables should remain clean and well contained for pickup.

**In an effort to reduce the quantity of solid waste generated by the town, we continue to encourage residents to recycle.**



### Recycling Plastic

#1-#7 rigid plastic containers. To help you determine if something can be recycled here at ecomaine, we suggest applying these three tests:

**Test #1-** Is it marked with the chasing arrow triangle with a number from 1-7?

**Test #2-** Is it rigid or does it have a hard form?

**Test #3-** Is it a container?

If a plastic item passes all three tests, we can recycle it through ecomaine!

But wait...there are exceptions to every rule; 1. No form of foam (Styrofoam) is recyclable at ecomaine, so even if it passes all three tests it is still not recyclable because ecomaine can't find a factory who will buy it. 2. Plastic shopping sacks are recycled at ecomaine. Although it fails Test #2, we will recycle a shopping sack.

### Recycling Paper

What Can Be Recycled- We can recycle most paper. Specifically, mixed papers & old mail, newspapers, magazines, phone books, catalogs, paperback & hard bound books with covers torn off, and paper bags.

### Recycling Paperboard and Cardboard

What Can Be Recycled- Specifically, clean food boxes with all metal and plastic removed. Acceptable materials include cereal, rice, & cake mix boxes, salt boxes, plastic wrap boxes (not the plastic wrap itself) medicine, toiletry, aspirin, Band-Aid & shirt boxes. Toilet paper & paper towel tubes, writing pad backs, poster board, egg cartons and clean corrugated cardboard boxes.

### Recycling Glass

What Can Be Recycled- Clear and colored glass bottles and jars

### Recycling Cans and Aluminum

What Can Be Recycled- Metal food and beverage cans, aluminum foil, aluminum trays and pans, and empty aerosol cans.

**New, Larger Recycling Bins are available at Town Hall for \$10 each.**

**Bulky Item Pickup Week**  
**This event is held one week in May and one week in October.**

A Bulky Item Pickup Week was designed to assist the Residents of Cumberland in the disposal of large, oversized items that cannot fit into the Town's PAYT bags in the weekly trash or be recycled in regular curbside recycling.

This program is not designed to be a free trash disposal week.  
Smaller items that could fit into a PAYT bag should be disposed of with your weekly trash.

For more information, please visit the Public Service page at [www.cumberlandmaine.com](http://www.cumberlandmaine.com)

**Items Accepted:**

Bicycles  
2 Tires (if rims have been removed)  
Washers & Dryers  
Rolled carpet  
Chairs  
Couches  
Tables and other Furniture  
Large Exercise Equipment  
Paint Cans (if OPEN and DRY)

**Items NOT Accepted:**

Gas and Gasoline Containers  
Any Hazardous Waste  
Plastic Bags of Trash  
Cardboard or Glass  
Bags or Boxes of smaller items  
Bags or Boxes of Clothing or Textiles  
Yard or Tree Waste  
Construction Material and Wood Products  
TV's & Computers  
Appliances containing Freon

